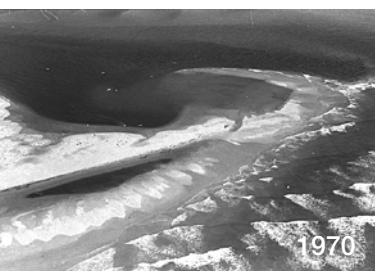
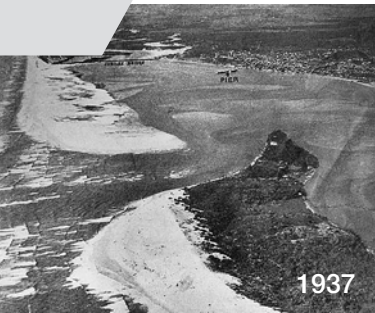


History of The Spit

The Spit over the years



Overview

Prior to the construction of the Gold Coast Seaway in 1980s, the Nerang River entrance to the Pacific Ocean (locally known as the Southport Bar) had a history of instability.

Predominant south-easterly winds, the significant northern drift of sand and wave climate combined to move an estimated 500,000 cubic metres of sand along the south-east Queensland coast each year.

Over time, the Nerang River mouth moved northward by up to 60 metres each year, causing land erosion and changing sandbanks at the bar and adjoining Broadwater.

In the early 1800s, the Nerang River entered the Pacific Ocean where Jupiters Casino is now located.

In 1930 the entrance was where Sea World stands today.

A low sand spit developed to the north of Main Beach Point and continued to edge across the mouth of the Nerang River.

Tidal action eroded sand from the southern tip of South Stradbroke, resulting eventually in the surveyed township site of Moondarewa disappearing entirely by the 1940s.

The Gold Coast Seaway engineering project, completed in 1987, consolidated The Spit as a permanent land form.

At that time, the northern section of The Spit had little vegetation.

Over the past 60 years, the area has been progressively developed:

- The Sea World site was initially established as Surfers Paradise Ski Gardens in 1958.
- Sheraton Mirage opened in 1988.
- Doug Jennings Park was dedicated in 1988.
- Palazzo Versace opened in 2000.
- Federation Walk opened in 2000.