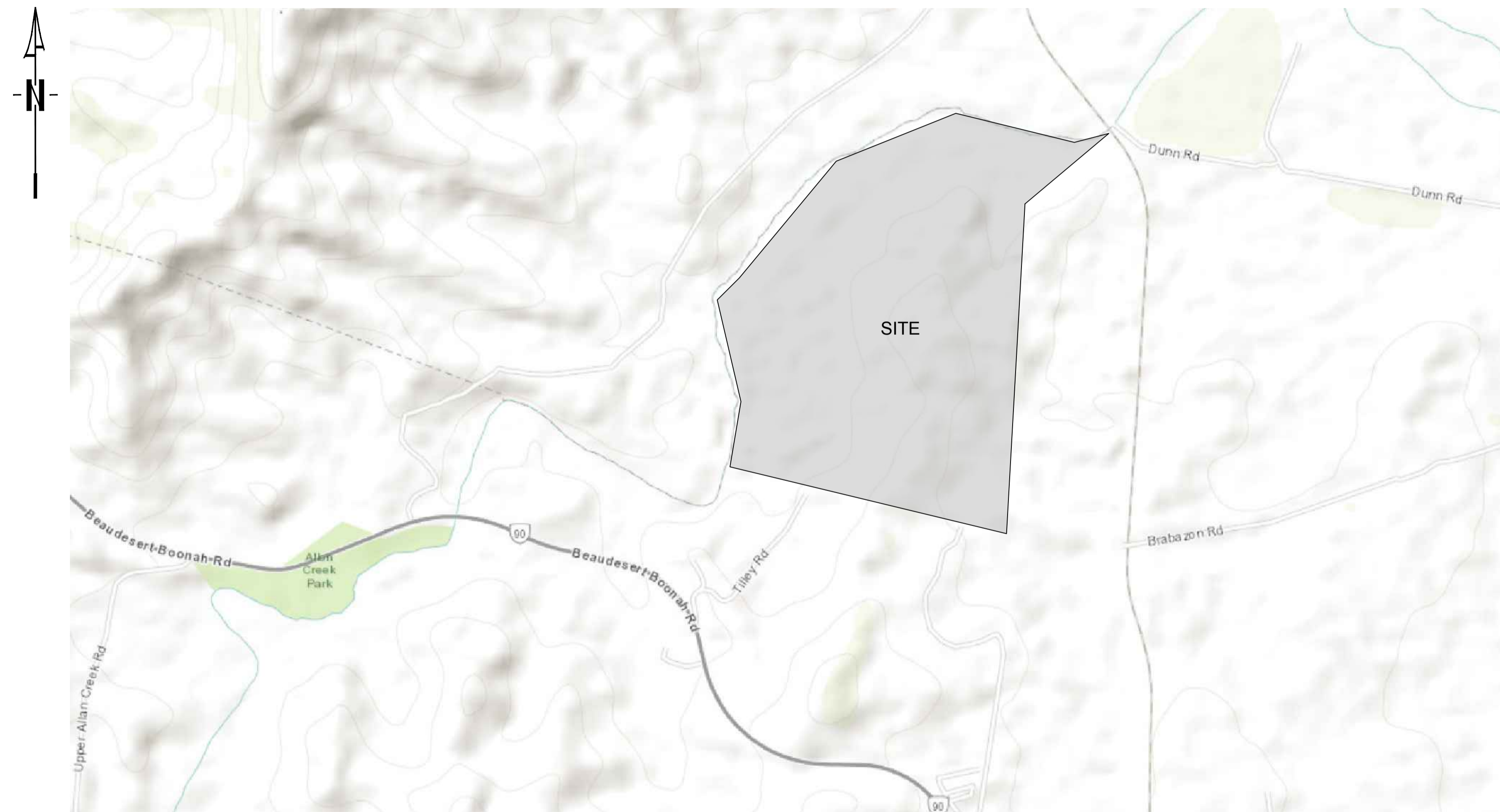


# POULTRY FARM - 75 TILLEY RD, BROMELTON

## FOR ALLANS CREEK POULTRY FARM




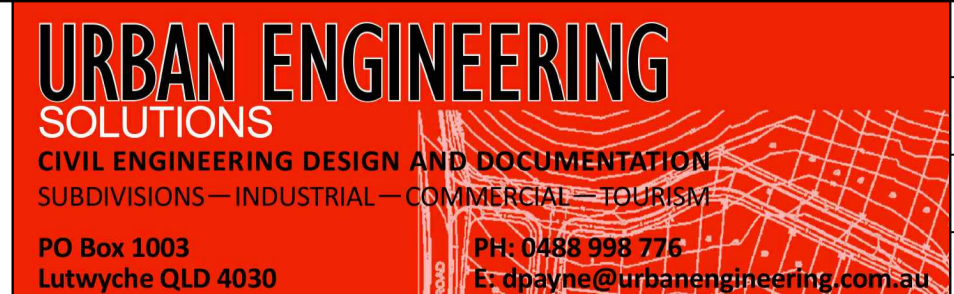
**LOCALITY PLAN**  
GOOGLE MAP

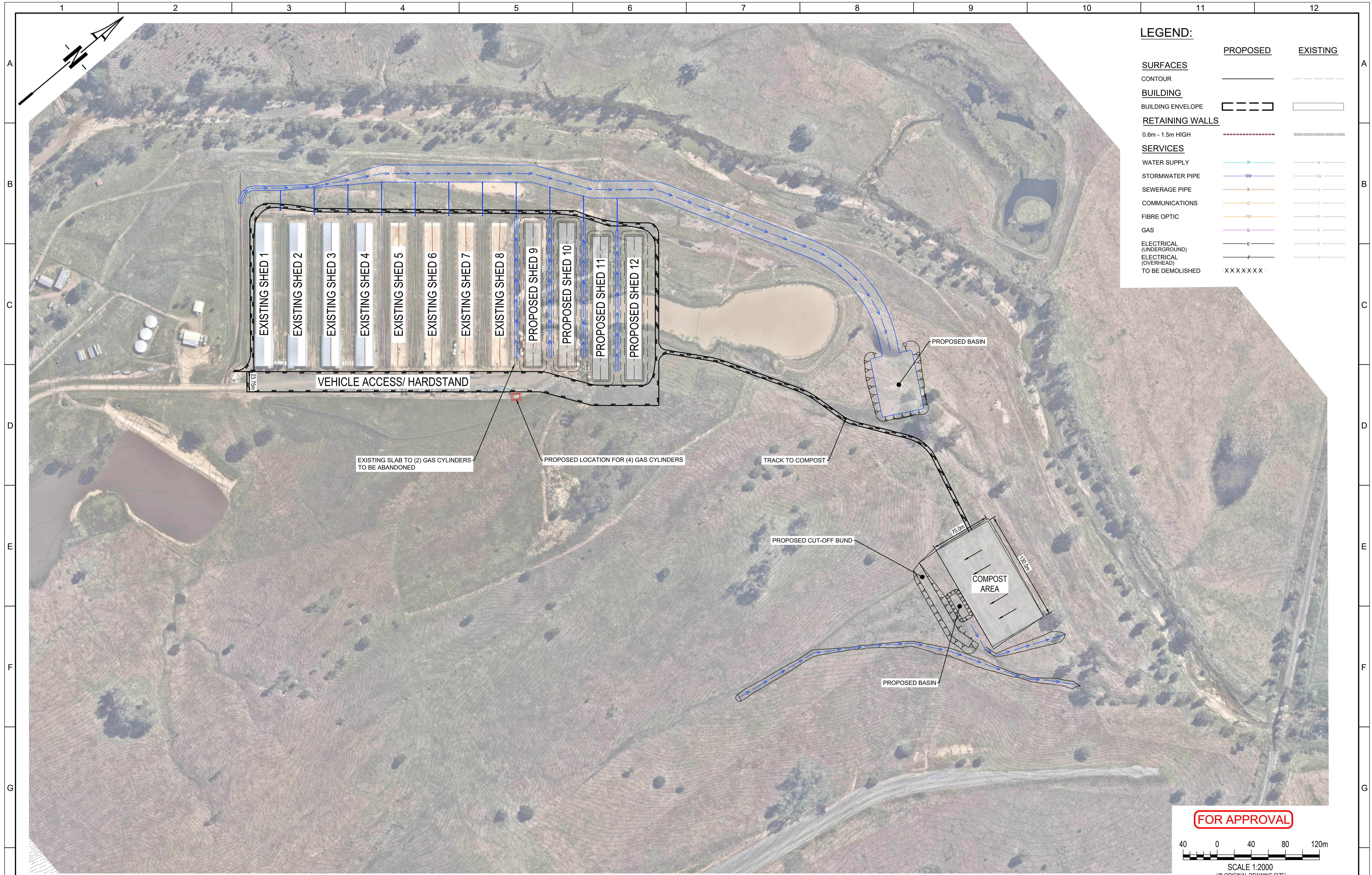
DRAWING INDEX	
SHEET NUMBER	SHEET TITLE
OVERALL	
DA-AA-000	LOCALITY PLAN AND DRAWING LIST
DA-AA-100	LAYOUT PLAN
DA-AA-110	SITE PLAN SHEET 1
DA-AA-111	SITE PLAN SHEET 2
BULK EARTHWORKS	
DA-BE-100	LAYOUT PLAN
DA-BE-200	SECTIONS
ROADWORKS	
DA-RW-100	LAYOUT PLAN
DA-RW-700	VEHICLE TURN PATHS
STORMWATER	
DA-SD-100	CATCHMENT LAYOUT PLAN

RP DESCRIPTION  
LOT 50 ON SP179833

URBAN ENGINEERING SOLUTIONS PTY. LTD.  
CONTACT: Mr. DEAN PAYNE  
TELEPHONE: 0488 998 776

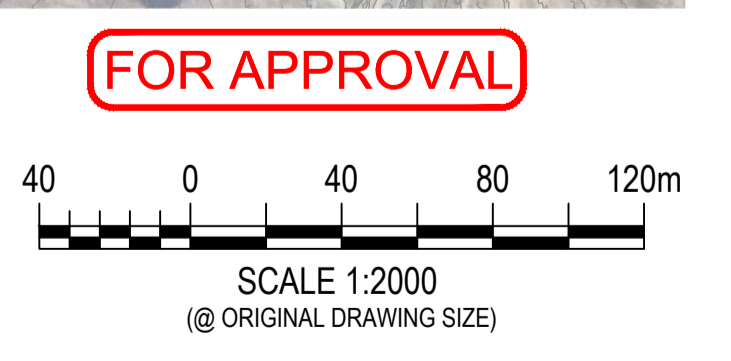
**FOR APPROVAL**


© 2022 Urban Engineering Solutions Pty. Ltd. This design and drawing remain the property of Urban Engineering Solutions Pty. Ltd. and is not to be reproduced either in whole or in part without the written permission of Urban Engineering Solutions Pty. Ltd.		Client			Drawn	Q.T.	Project <b>POULTRY FARM - 75 TILLEY RD, BROMELTON</b>	Drawing Number <b>C0284-DA-AA-000</b>
A	ISSUED FOR APPROVAL	Q.T.			28.07.22	Designed		
P1	PRELIMINARY ISSUE	Q.T.	15.07.22	Passed	<i>[Signature]</i>	Rev <b>A</b>		
Rev	Description	Date	DO NOT SCALE FROM DRAWING	Checked	<i>[Signature]</i>			



**LEGEND:**

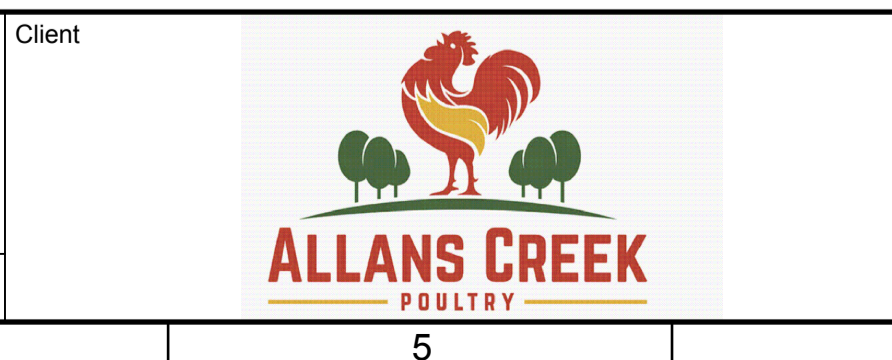
	PROPOSED	EXISTING
<b>SURFACES</b>		
CONTOUR	—	- - - -
<b>BUILDING</b>		
BUILDING ENVELOPE	▭ - - - -	▭
<b>RETAINING WALLS</b>		
0.6m - 1.5m HIGH	- - - - -	—
<b>SERVICES</b>		
WATER SUPPLY	— W —	— W —
STORMWATER PIPE	— SW —	— SW —
SEWERAGE PIPE	— S —	— S —
COMMUNICATIONS	— C —	— C —
FIBRE OPTIC	— FO —	— FO —
GAS	— G —	— G —
ELECTRICAL (UNDERGROUND)	— E —	— E —
ELECTRICAL (OVERHEAD)	— E —	— E —
TO BE DEMOLISHED	X X X X X X X	



		© 2022 Urban Engineering Solutions Pty. Ltd. This design and drawing remain the property of Urban Engineering Solutions Pty. Ltd. and is not to be reproduced either in whole or in part without the written permission of Urban Engineering Solutions Pty. Ltd.	Client	 <b>ALLANS CREEK</b> POULTRY	<b>URBAN ENGINEERING SOLUTIONS</b> CIVIL ENGINEERING DESIGN AND DOCUMENTATION SUBDIVISIONS — INDUSTRIAL — COMMERCIAL — TOURISM PO Box 1003 Lutwyche QLD 4030 PH: 0488 998 776 E: dpayne@urbanengineering.com.au	Drawn Q.T. Designed D.P. Passed <i>[Signature]</i> Checked <i>[Signature]</i>	Project <b>POULTRY FARM - 75 TILLEY RD, BROMELTON</b> Title <b>OVERALL LAYOUT PLAN</b>	Drawing Number <b>C0284-DA-AA-100</b> Print Scale A1 Rev <b>A</b>									
<table border="1" style="width: 100%; border-collapse: collapse;"> <thead> <tr> <th style="width: 5%;">Rev</th> <th style="width: 15%;">Description</th> <th style="width: 10%;">Date</th> </tr> </thead> <tbody> <tr> <td>A</td> <td>ISSUED FOR APPROVAL</td> <td>Q.T. 28.07.22</td> </tr> <tr> <td>P1</td> <td>PRELIMINARY ISSUE</td> <td>Q.T. 15.07.22</td> </tr> </tbody> </table>	Rev	Description	Date	A	ISSUED FOR APPROVAL	Q.T. 28.07.22	P1	PRELIMINARY ISSUE	Q.T. 15.07.22		DO NOT SCALE FROM DRAWING						
Rev	Description	Date															
A	ISSUED FOR APPROVAL	Q.T. 28.07.22															
P1	PRELIMINARY ISSUE	Q.T. 15.07.22															

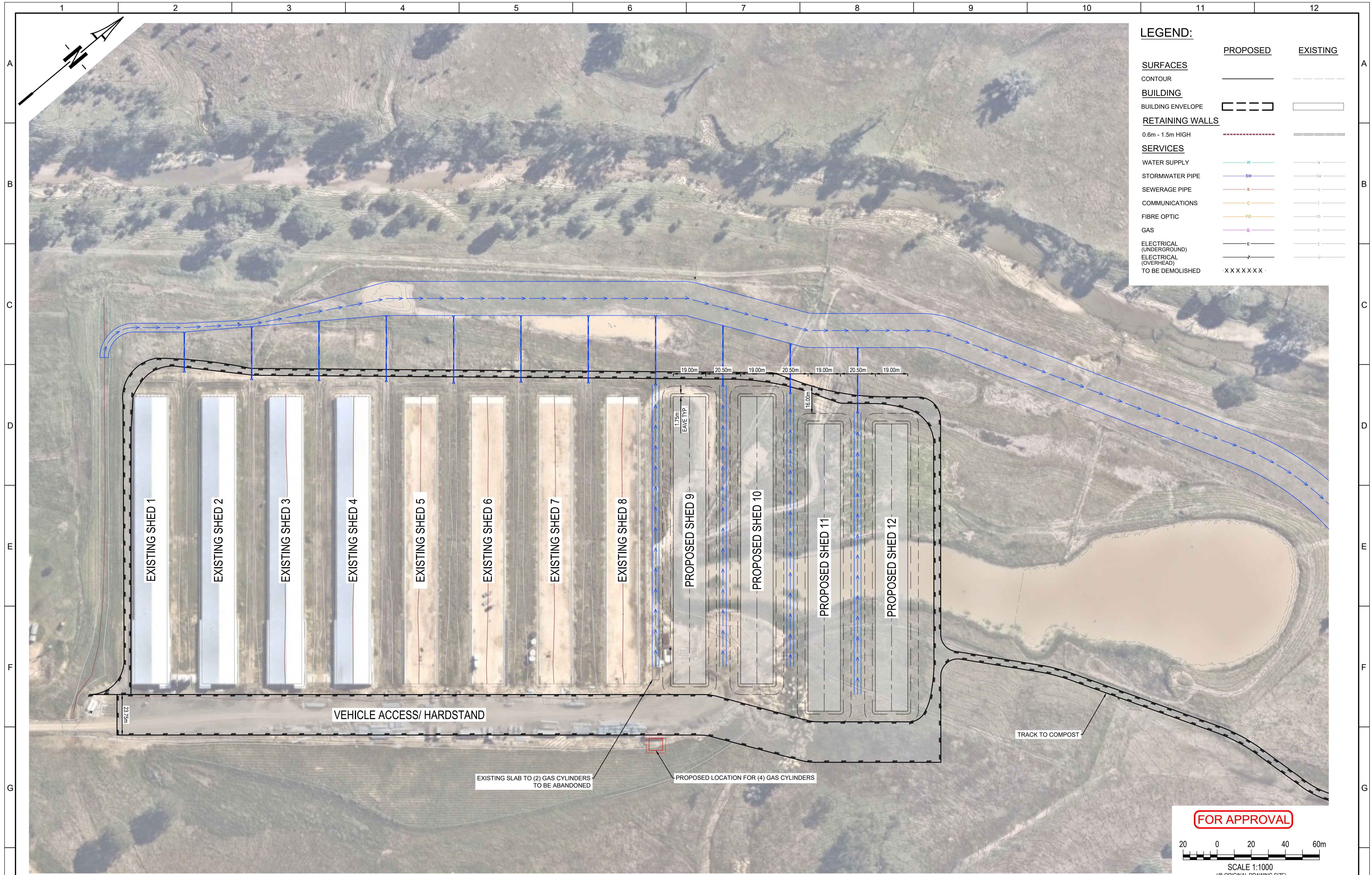


© 2022 Urban Engineering Solutions Pty. Ltd.		Client	
This design and drawing remain the property of Urban Engineering Solutions Pty. Ltd. and is not to be reproduced either in whole or in part without the written permission of Urban Engineering Solutions Pty. Ltd.			
A	ISSUED FOR APPROVAL	Q.T.	28.07.22
P1	PRELIMINARY ISSUE	Q.T.	15.07.22
Rev	Description	Date	DO NOT SCALE FROM DRAWING



**URBAN ENGINEERING SOLUTIONS**  
 CIVIL ENGINEERING DESIGN AND DOCUMENTATION  
 SUBDIVISIONS — INDUSTRIAL — COMMERCIAL — TOURISM  
 PO Box 1003 Lutwyche QLD 4030  
 PH: 0488 998 776  
 E: dpayne@urbanengineering.com.au

Drawn	Q.T.	Project <b>POULTRY FARM - 75 TILLEY RD, BROMELTON</b>	Drawing Number <b>C0284-DA-AA-111</b>
Designed	D.P.		
Passed	<i>[Signature]</i>		
Checked	<i>[Signature]</i>		
Title <b>OVERALL SITE PLAN SHEET 2</b>		Print Scale A1	Rev A



© 2022 Urban Engineering Solutions Pty. Ltd. This design and drawing remain the property of Urban Engineering Solutions Pty. Ltd. and is not to be reproduced either in whole or in part without the written permission of Urban Engineering Solutions Pty. Ltd.		Client	
A	ISSUED FOR APPROVAL	Q.T.	28.07.22
P1	PRELIMINARY ISSUE	Q.T.	15.07.22
Rev	Description	Date	DO NOT SCALE FROM DRAWING

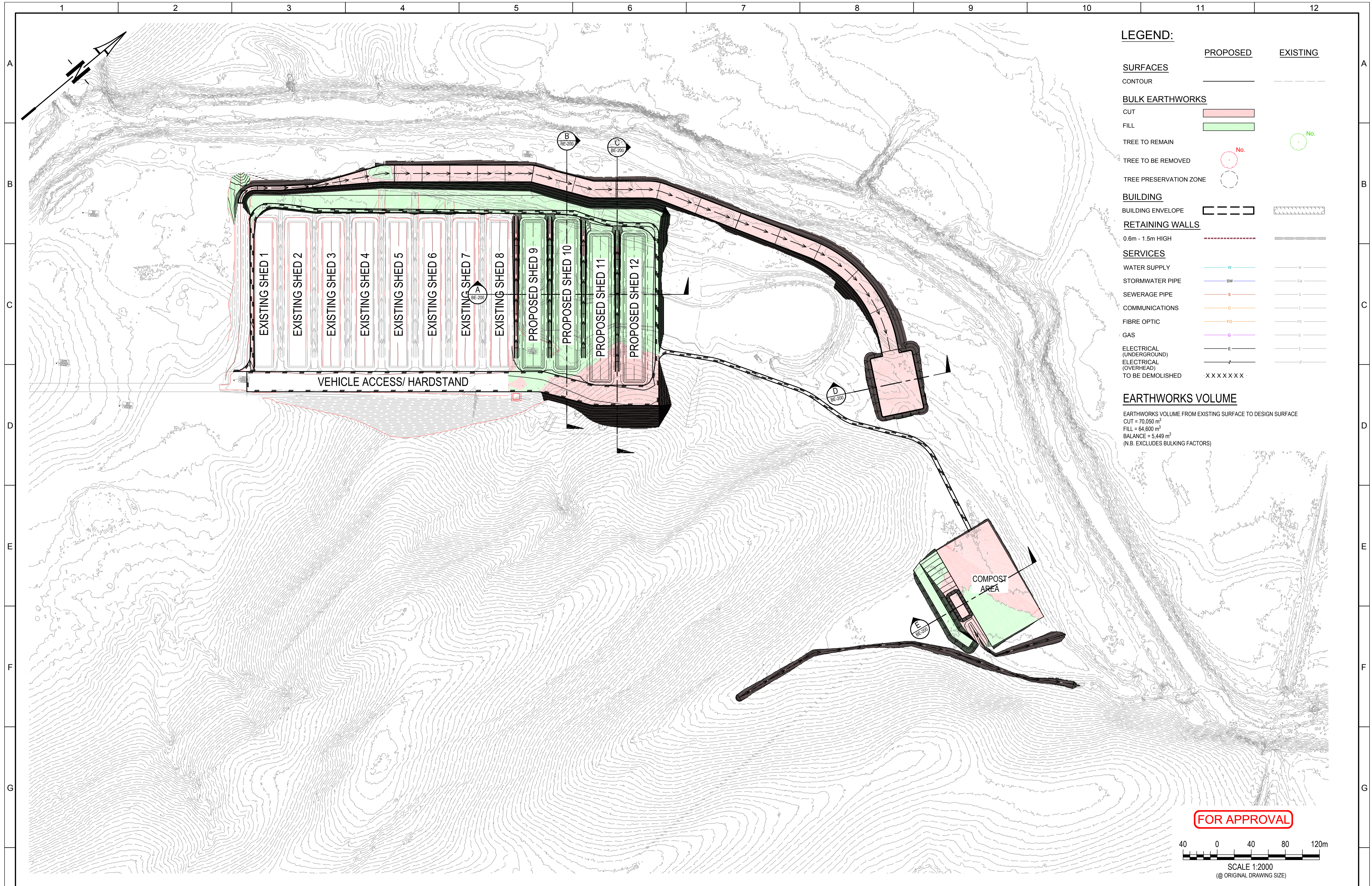


**URBAN ENGINEERING SOLUTIONS**  
 CIVIL ENGINEERING DESIGN AND DOCUMENTATION  
 SUBDIVISIONS — INDUSTRIAL — COMMERCIAL — TOURISM  
 PO Box 1003 Lutwyche QLD 4030  
 PH: 0488 998 776  
 E: dpayne@urbanengineering.com.au

Drawn	Q.T.
Designed	D.P.
Passed	<i>[Signature]</i>
Checked	<i>[Signature]</i>

Project: **POULTRY FARM - 75 TILLEY RD, BROMELTON**  
 Title: **OVERALL SITE PLAN SHEET 1**

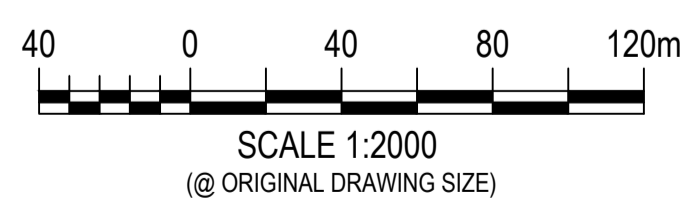
Drawing Number	
<b>C0284-DA-AA-110</b>	
Print Scale	Rev
A1	A



**LEGEND:**

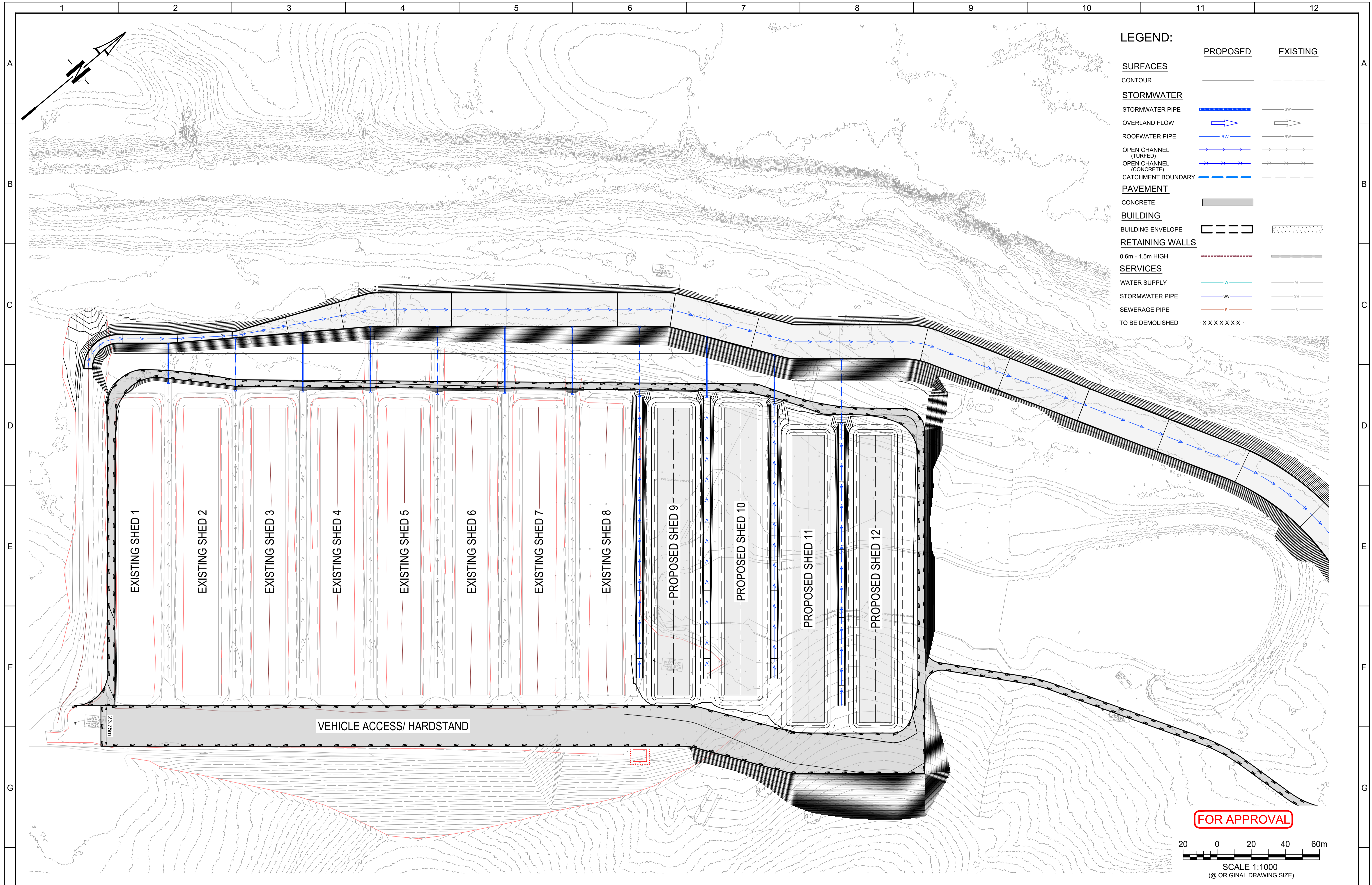
	PROPOSED	EXISTING
<b>SURFACES</b>		
CONTOUR	—	- - - -
<b>BULK EARTHWORKS</b>		
CUT	[Pink Box]	
FILL	[Green Box]	
TREE TO REMAIN	[Red Circle]	[Green Circle]
TREE TO BE REMOVED	[Red Circle]	[Green Circle]
TREE PRESERVATION ZONE	[Red Circle]	[Green Circle]
<b>BUILDING</b>		
BUILDING ENVELOPE	[Dashed Line]	[Hatched Box]
<b>RETAINING WALLS</b>		
0.6m - 1.5m HIGH	[Red Dashed Line]	[Grey Line]
<b>SERVICES</b>		
WATER SUPPLY	[Blue Line]	[Black Line]
STORMWATER PIPE	[Blue Line]	[Black Line]
SEWERAGE PIPE	[Red Line]	[Black Line]
COMMUNICATIONS	[Orange Line]	[Black Line]
FIBRE OPTIC	[Purple Line]	[Black Line]
GAS	[Green Line]	[Black Line]
ELECTRICAL (UNDERGROUND)	[Black Line]	[Black Line]
ELECTRICAL (OVERHEAD)	[Black Line]	[Black Line]
TO BE DEMOLISHED	[X X X X X X]	
<b>EARTHWORKS VOLUME</b>		
EARTHWORKS VOLUME FROM EXISTING SURFACE TO DESIGN SURFACE		
CUT = 70,050 m <sup>3</sup>		
FILL = 64,600 m <sup>3</sup>		
BALANCE = 5,449 m <sup>3</sup>		
(N.B. EXCLUDES BULKING FACTORS)		

**FOR APPROVAL**



© 2022 Urban Engineering Solutions Pty. Ltd. This design and drawing remain the property of Urban Engineering Solutions Pty. Ltd. and is not to be reproduced either in whole or in part without the written permission of Urban Engineering Solutions Pty. Ltd.		Client	 <b>ALLANS CREEK</b> POULTRY	<b>URBAN ENGINEERING SOLUTIONS</b> CIVIL ENGINEERING DESIGN AND DOCUMENTATION SUBDIVISIONS — INDUSTRIAL — COMMERCIAL — TOURISM PO Box 1003 Lutwyche QLD 4030 PH: 0488 998 775 E: dpayne@urbanengineering.com.au	Drawn	Q.T.	Project <b>POULTRY FARM - 75 TILLEY RD, BROMELTON</b>	Drawing Number <b>C0284-DA-BE-100</b>
A	ISSUED FOR APPROVAL	Q.T.			28.07.22	Designed		
P1	PRELIMINARY ISSUE	Q.T.	15.07.22	Passed	<i>[Signature]</i>	Rev <b>A</b>		
Rev	Description	Date	DO NOT SCALE FROM DRAWING	Checked	<i>[Signature]</i>			





© 2022 Urban Engineering Solutions Pty. Ltd. This design and drawing remain the property of Urban Engineering Solutions Pty. Ltd. and is not to be reproduced either in whole or in part without the written permission of Urban Engineering Solutions Pty. Ltd.		Client	
A	ISSUED FOR APPROVAL	Q.T.	28.07.22
P1	PRELIMINARY ISSUE	Q.T.	15.07.22
Rev	Description	Date	DO NOT SCALE FROM DRAWING

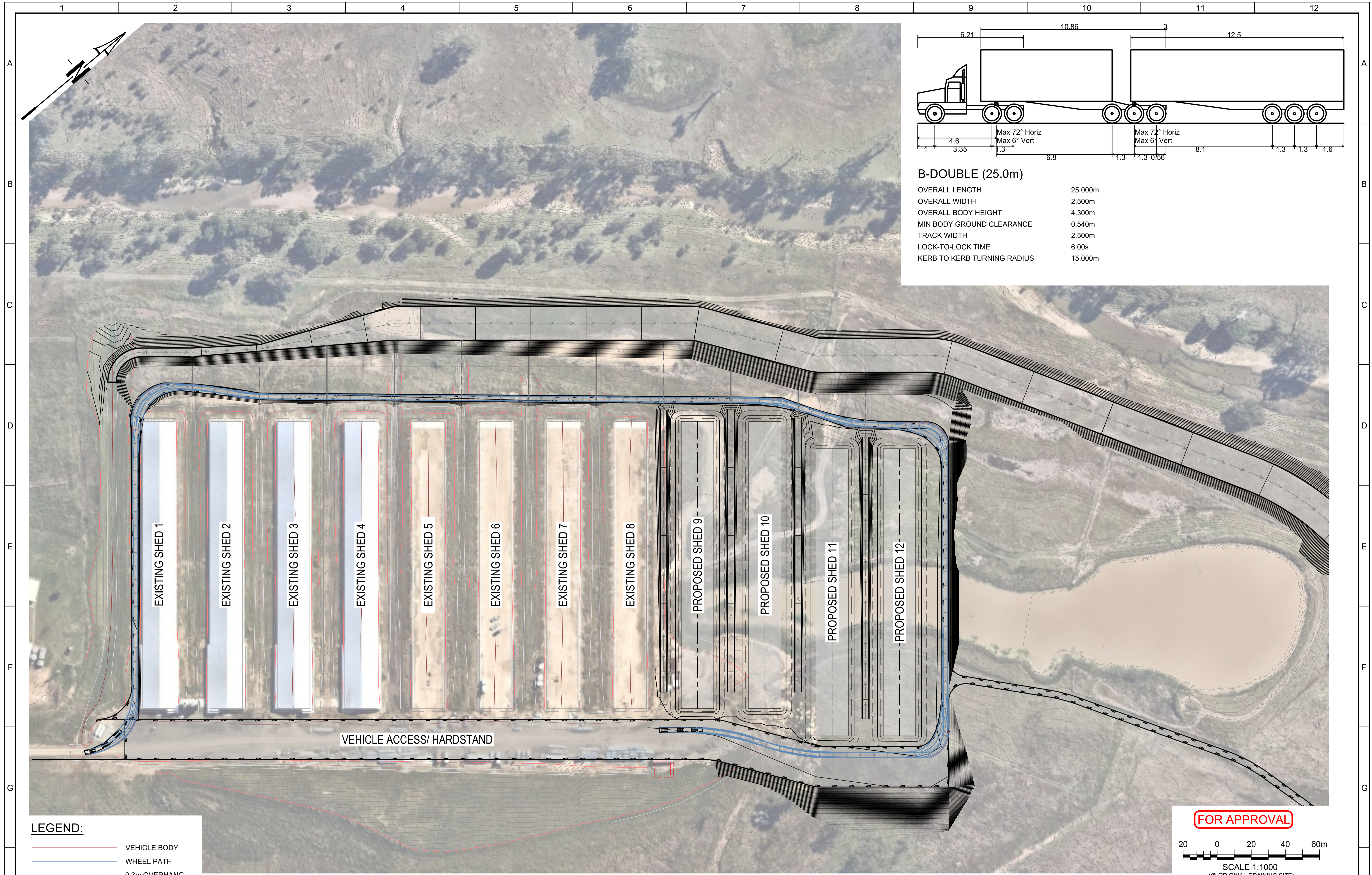


**URBAN ENGINEERING SOLUTIONS**  
 CIVIL ENGINEERING DESIGN AND DOCUMENTATION  
 SUBDIVISIONS – INDUSTRIAL – COMMERCIAL – TOURISM  
 PO Box 1003 Lutwyche QLD 4030  
 PH: 0488 998 775  
 E: dpayne@urbanengineering.com.au

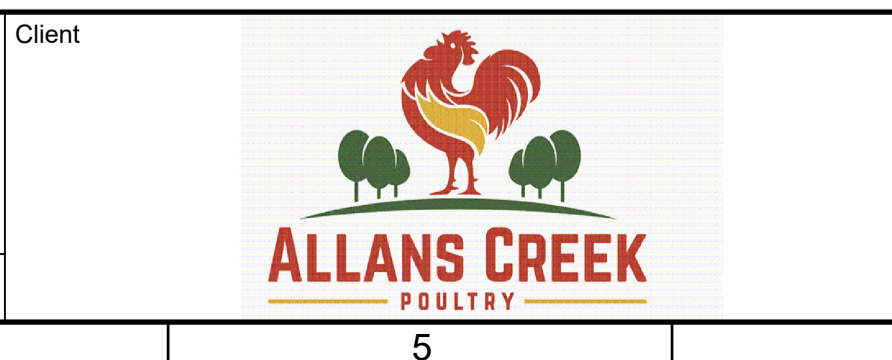
Drawn	Q.T.
Designed	D.P.
Passed	<i>[Signature]</i>
Checked	<i>[Signature]</i>

Project: **POULTRY FARM - 75 TILLEY RD, BROMELTON**  
 Title: **ROADWORKS LAYOUT PLAN**

Drawing Number	
<b>C0284-DA-RW-100</b>	
Print Scale	Rev
A1	A



© 2022 Urban Engineering Solutions Pty. Ltd.		Client	
This design and drawing remain the property of Urban Engineering Solutions Pty. Ltd. and is not to be reproduced either in whole or in part without the written permission of Urban Engineering Solutions Pty. Ltd.			
A	ISSUED FOR APPROVAL	Q.T.	28.07.22
P1	PRELIMINARY ISSUE	Q.T.	15.07.22
Rev	Description	Date	DO NOT SCALE FROM DRAWING



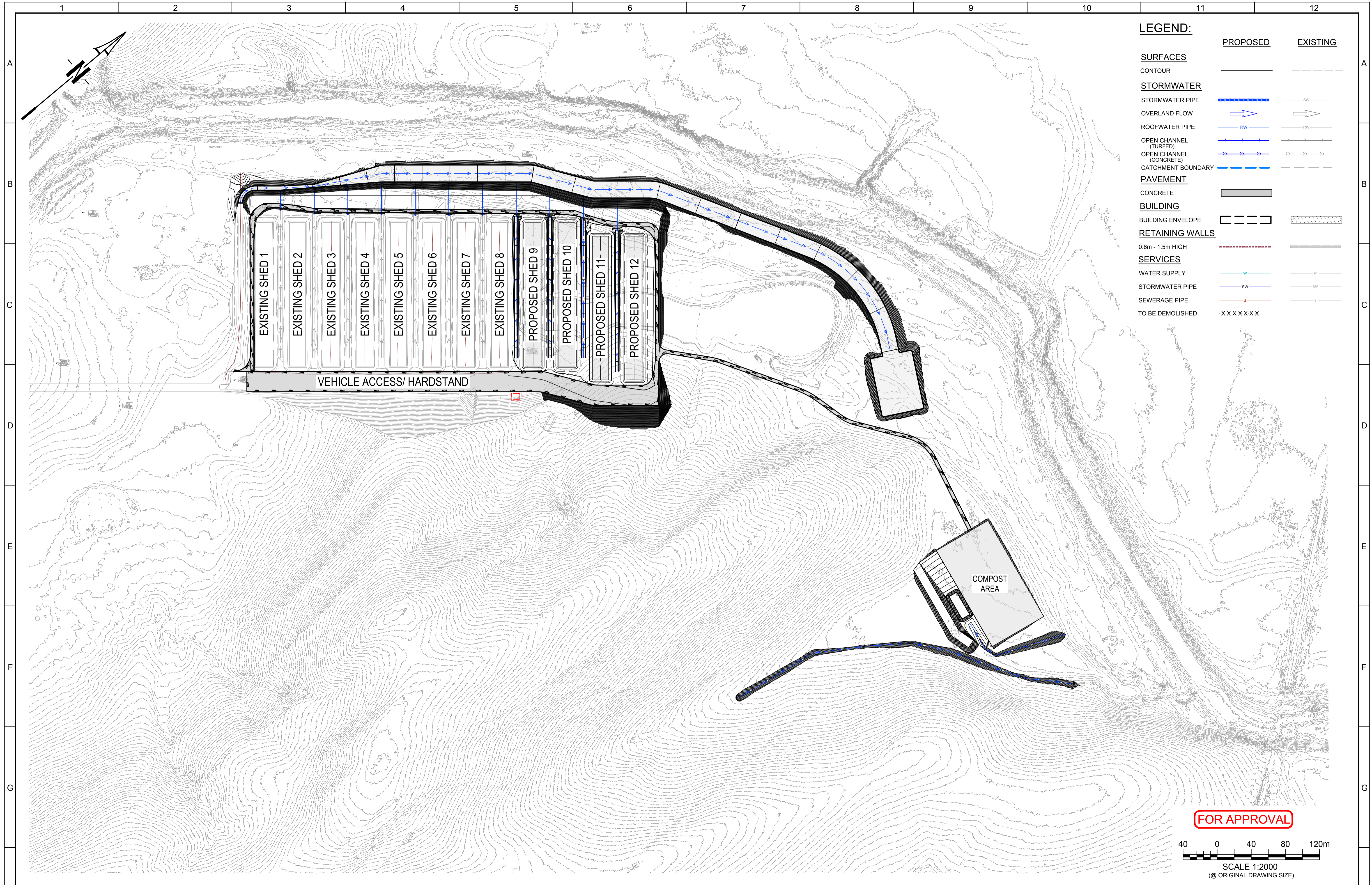
**URBAN ENGINEERING SOLUTIONS**  
CIVIL ENGINEERING DESIGN AND DOCUMENTATION  
SUBDIVISIONS — INDUSTRIAL — COMMERCIAL — TOURISM  
PO Box 1003 Lutwyche QLD 4030  
PH: 0488 998 776  
E: dpayne@urbanengineering.com.au

Drawn	Q.T.
Designed	D.P.
Passed	<i>[Signature]</i>
Checked	<i>[Signature]</i>

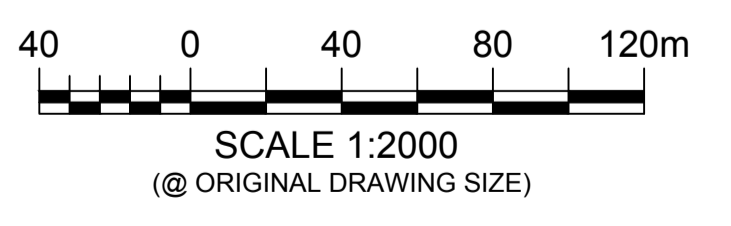
Project: **POULTRY FARM - 75 TILLEY RD, BROMELTON**  
Title: **ROADWORKS VEHICLE TURN PATHS**

Drawing Number	
<b>C0284-DA-RW-700</b>	
Print Scale	Rev
A1	A





**FOR APPROVAL**



© 2022 Urban Engineering Solutions Pty. Ltd. This design and drawing remain the property of Urban Engineering Solutions Pty. Ltd. and is not to be reproduced either in whole or in part without the written permission of Urban Engineering Solutions Pty. Ltd.		Client	 <b>ALLANS CREEK</b> POULTRY	<b>URBAN ENGINEERING SOLUTIONS</b> CIVIL ENGINEERING DESIGN AND DOCUMENTATION SUBDIVISIONS — INDUSTRIAL — COMMERCIAL — TOURISM PO Box 1003 Lutwyche QLD 4030 PH: 0488 998 775 E: dpayne@urbanengineering.com.au	Drawn	Q.T.	Project <b>POULTRY FARM - 75 TILLEY RD, BROMELTON</b>	Drawing Number	C0284-DA-SD-100	
A	ISSUED FOR APPROVAL	Q.T.			28.07.22	Designed		D.P.	Title <b>STORMWATER CATCHMENT LAYOUT PLAN</b>	Print Scale
P1	PRELIMINARY ISSUE	Q.T.	15.07.22	Passed	<i>[Signature]</i>	Checked	<i>[Signature]</i>			
Rev	Description	Date	DO NOT SCALE FROM DRAWING							