

LEGEND

- CADASTRAL APPROXIMATION OF BOUNDARY BY AAM HATCH
- ALIGNMENT BASED ON COORDINATE APPROXIMATION
- LOT 1 RP602796
- LOT 2 RP601795
- LOT 3 RP603158
- CAV
- SPV
- SCV
- IV
- FC
- FUTURE CONNECTION - REFER DWG 0202 FOR DETAILS
- RIGHT OF WAY

PROPERTY DESCRIPTION

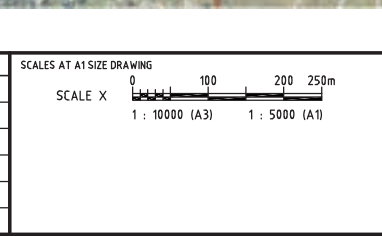
- COMBINATION AIR VALVE - REFER DWG 0207 FOR DETAILS
- SURGE PROTECTION AIR VALVE - REFER DWG 0201 FOR DETAILS
- SCOUR VALVE - REFER DWG 0201 FOR DETAILS
- ISOLATION VALVE - REFER DWG 0201 FOR DETAILS
- FUTURE CONNECTION - REFER DWG 0202 FOR DETAILS

NOTE
1. FOR SMEC'S DISCLAIMER REFER DRAWING 30032687-DWG-32000-G-0112

NOT FOR CONSTRUCTION

DRAWING FILE LOCATION / NAME V:_Vault\Projects\3003\30032687\GFP-DE Project\110_CADD\CAD\DWG\01 30 GL\34100 ALTON DOWNS TO RAGLAN PIPELINE\30032687-DWG-34100-C-4033.dwg		PLOT DATE 23 Nov 2022		TIME 13:03:12	
EXTERNAL REFERENCE FILES	REV	DATE	AMENDMENT / REVISION DESCRIPTION	MWR No.	APPROVAL
X_5000_DWG_LEGEND	A	20.08.21	30% CONCEPT DESIGN	006	MSL
X_30032687_SHEC_A1	B	14.01.22	CONCEPT DESIGN-ECI PHASE	006	MSL
X_VALVES	C	30.06.22	OPTIMISED CONCEPT DESIGN	006	MSL
X_CONTOUR_1m INTERVAL	D	18.11.22	UPDATED RIGHT OF WAY	037	MSL
X_30032687_GFP_Aerial_Images					
X_DC08					
X_30032687_GFP_Aerial_Images_3					
X_30032687_GFP_Alignment_2522					
X_30032687_GFP_ROW					

APPROVAL	TITLE	NAME
006 MSL	DRAFTER	SUCHITH.R
006 MSL	DRAFTING CHECK	C.BOU
006 MSL	DESIGNER	J.WAGENAAR
037 MSL	DESIGN CHECK	M.SERRANO LOPEZ
	PROJECT MANAGER	M.SERRANO LOPEZ
	PROJECT DIRECTOR	D.TAYLOR



DESIGNER

Member of the Stantec Group
© ABN 47 065 475 149

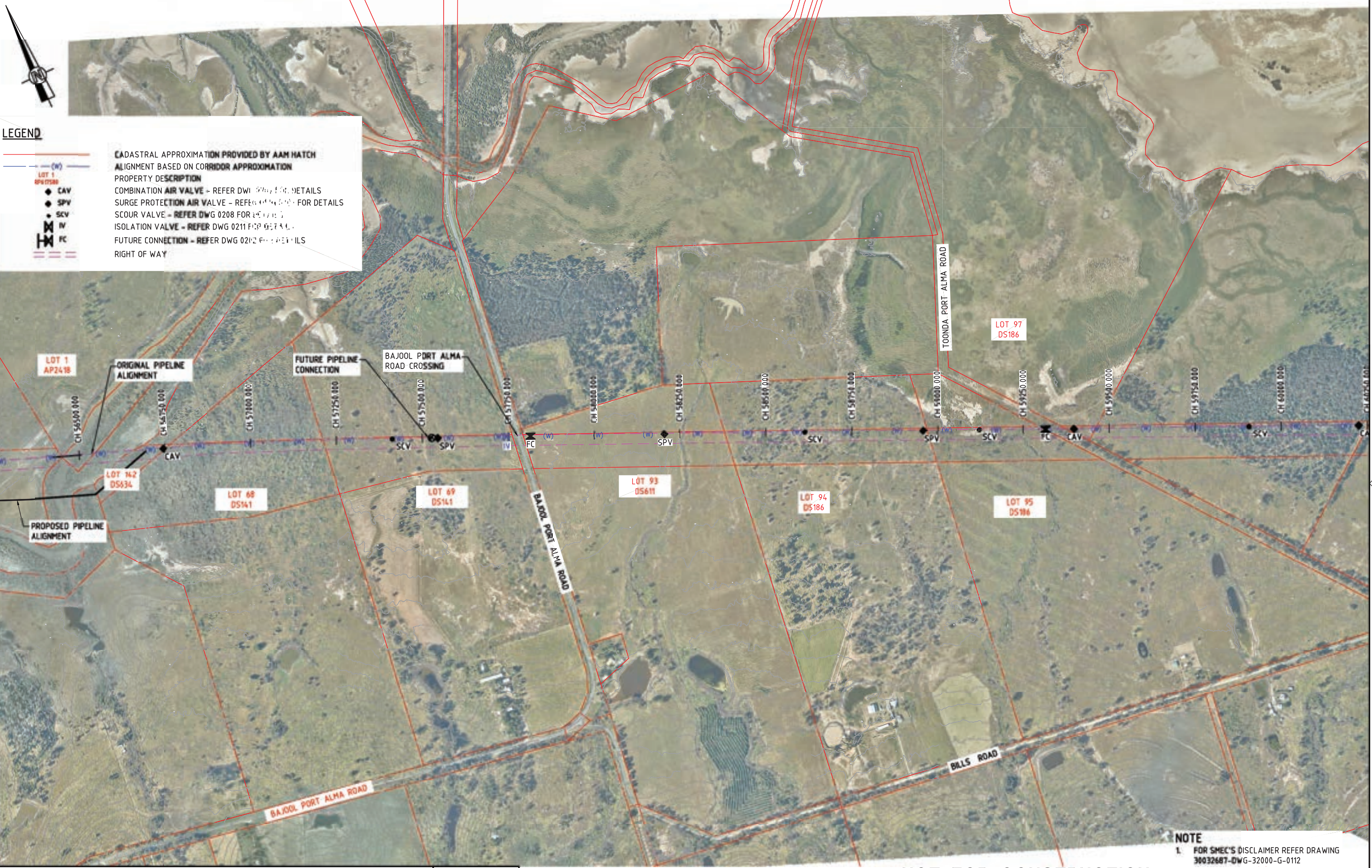
LEVEL 6, 480 ST PAULS TERRACE
FORTITUDE VALLEY QLD 4006
SMEC PROJECT No 30032687

CLIENT

Gladstone Area Water Board

PROJECT TITLE FITZROY TO GLADSTONE PIPELINE PROJECT 30GLA - ALTON DOWNS TO RAGLAN PIPELINE LAYOUT PLAN CH54500 TO CH57000 SHEET 16			
SCALE 1:5000	PHASE CONCEPT DESIGN	PROJECT / DRAWING No. 30032687-DWG-34100-C-4033	REVISION D

150 mm ON ORIGINAL
A1



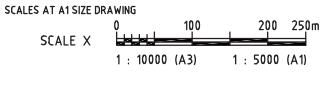
LEGEND

- (W) --- CADASTRAL APPROXIMATION PROVIDED BY AAM HATCH
- ALIGNMENT BASED ON CORRIDOR APPROXIMATION
- LOT 1 AP248
- CAV COMBINATION AIR VALVE - REFER DWG 0212 FOR DETAILS
- SPV SURGE PROTECTION AIR VALVE - REFER DWG 0212 FOR DETAILS
- SCV SCOUR VALVE - REFER DWG 0208 FOR DETAILS
- FC ISOLATION VALVE - REFER DWG 0211 FOR DETAILS
- FUTURE CONNECTION - REFER DWG 0212 FOR DETAILS
- RIGHT OF WAY

NOTE
 1. FOR SMEC'S DISCLAIMER REFER DRAWING 30032687-DWG-32000-G-0112

NOT FOR CONSTRUCTION

DRAWING FILE LOCATION / NAME V:_Vault\Projects\3003\30032687\GFP-DE Project\110_CADD\CAD\DWG\0130 GL\34100 ALTON DOWNS TO RAGLAN PIPELINE\30032687-DWG-34100-C-4034.dwg		PLOT DATE 23 Nov 2022		TIME 14:41:11			
EXTERNAL REFERENCE FILES	REV	DATE	AMENDMENT / REVISION DESCRIPTION	MWR No.	APPROVAL	TITLE	NAME
X:\Construction_Access X:\S000_DWG_LEGEND X:\30032687_SHEC_A1 X:\VALVES X:\CONTOUR Int INTERVAL X:\DCOB SS_30032687_GFP_Aerial Image X:\30032687_GFP_50W X:\TRENCHLESS CROSSINGS X:\30032687_GFP_Alignment_2022 X:\30032687_GFP_Aerial Image_3	A	20.08.21	30% CONCEPT DESIGN	006	MSL	DRAFTER	SUCHITH.R
	B	14.01.22	CONCEPT DESIGN-ECI PHASE	006	MSL	DRAFTING CHECK	C.BOU
	C	10.10.22	OPTIMISED CONCEPT DESIGN	036	MSL	DESIGNER	J.WAGENAAR
	D	18.11.22	UPDATED RIGHT OF WAY	037	MSL	DESIGN CHECK	M.SERRANO LOPEZ
						PROJECT MANAGER	M.SERRANO LOPEZ
						PROJECT DIRECTOR	D.TAYLOR



DESIGNER

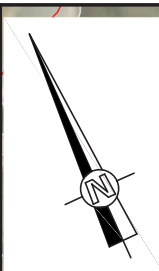
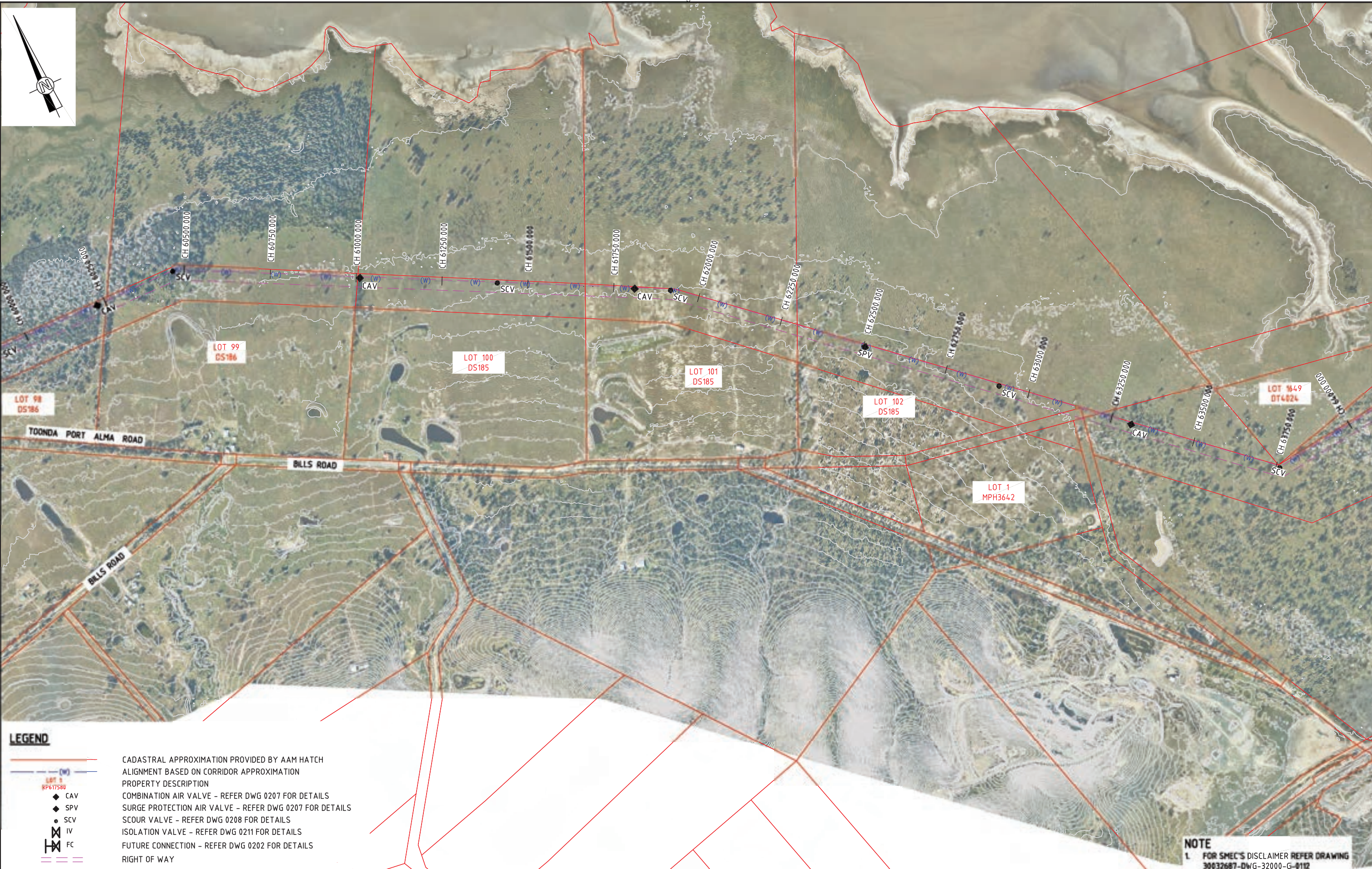
Member of the Sellen Group
 ABN 47 065 475 149
 LEVEL 6, 480 ST PAULS TERRACE
 FORTITUDE VALLEY QLD 4006
 SMEC PROJECT No 30032687

CLIENT

Gladstone Area Water Board

PROJECT TITLE FITZROY TO GLADSTONE PIPELINE PROJECT 30GLA - ALTON DOWNS TO RAGLAN PIPELINE LAYOUT PLAN CH57000 TO CH60500 SHEET 17			
SCALE 1:5000	PHASE CONCEPT DESIGN	PROJECT / DRAWING No. 30032687-DWG-34100-C-4034	REVISION D

150 mm ON ORIGINAL
 A1



LEGEND

- CADASTRAL APPROXIMATION PROVIDED BY AAM HATCH
- ALIGNMENT BASED ON CORRIDOR APPROXIMATION
- PROPERTY DESCRIPTION
- CAV
- SPV
- SCV
- IV
- FC
- RIGHT OF WAY

COMBINATION AIR VALVE - REFER DWG 0207 FOR DETAILS
 SURGE PROTECTION AIR VALVE - REFER DWG 0207 FOR DETAILS
 SCOUR VALVE - REFER DWG 0208 FOR DETAILS
 ISOLATION VALVE - REFER DWG 0211 FOR DETAILS
 FUTURE CONNECTION - REFER DWG 0202 FOR DETAILS

NOTE
 1. FOR SMEC'S DISCLAIMER REFER DRAWING 30032687-DWG-32000-G-0112

NOT FOR CONSTRUCTION

DRAWING FILE LOCATION / NAME V:_Vault\Projects\3003\30032687\GFP-DE Project\110_CADD\CAD\DWG\01 30 GL\34100 ALTON DOWNS TO RAGLAN PIPELINE\30032687-DWG-34100-C-4035.dwg		PLOT DATE 22 Nov 2022		TIME 19:30:13	
EXTERNAL REFERENCE FILES	REV	DATE	AMENDMENT / REVISION DESCRIPTION	MVR No.	APPROVAL
X_5000_DWG_LEGEND	A	20.08.21	30% CONCEPT DESIGN	006	MSL
X_30032687_SHEC_A1	B	14.01.22	CONCEPT DESIGN-ECI PHASE	006	MSL
X_VALVES	C	30.06.22	OPTIMISED CONCEPT DESIGN	006	MSL
X_CONTOUR 1m INTERVAL	D	18.11.22	UPDATED RIGHT OF WAY	037	MSL
X_DWG					
SS_30032687_GFP_Aerial Image					
X_30032687_GFP_Aerial Image_3					
X_30032687_GFP_ROW					
X_30032687_GFP_Alignment_2022					

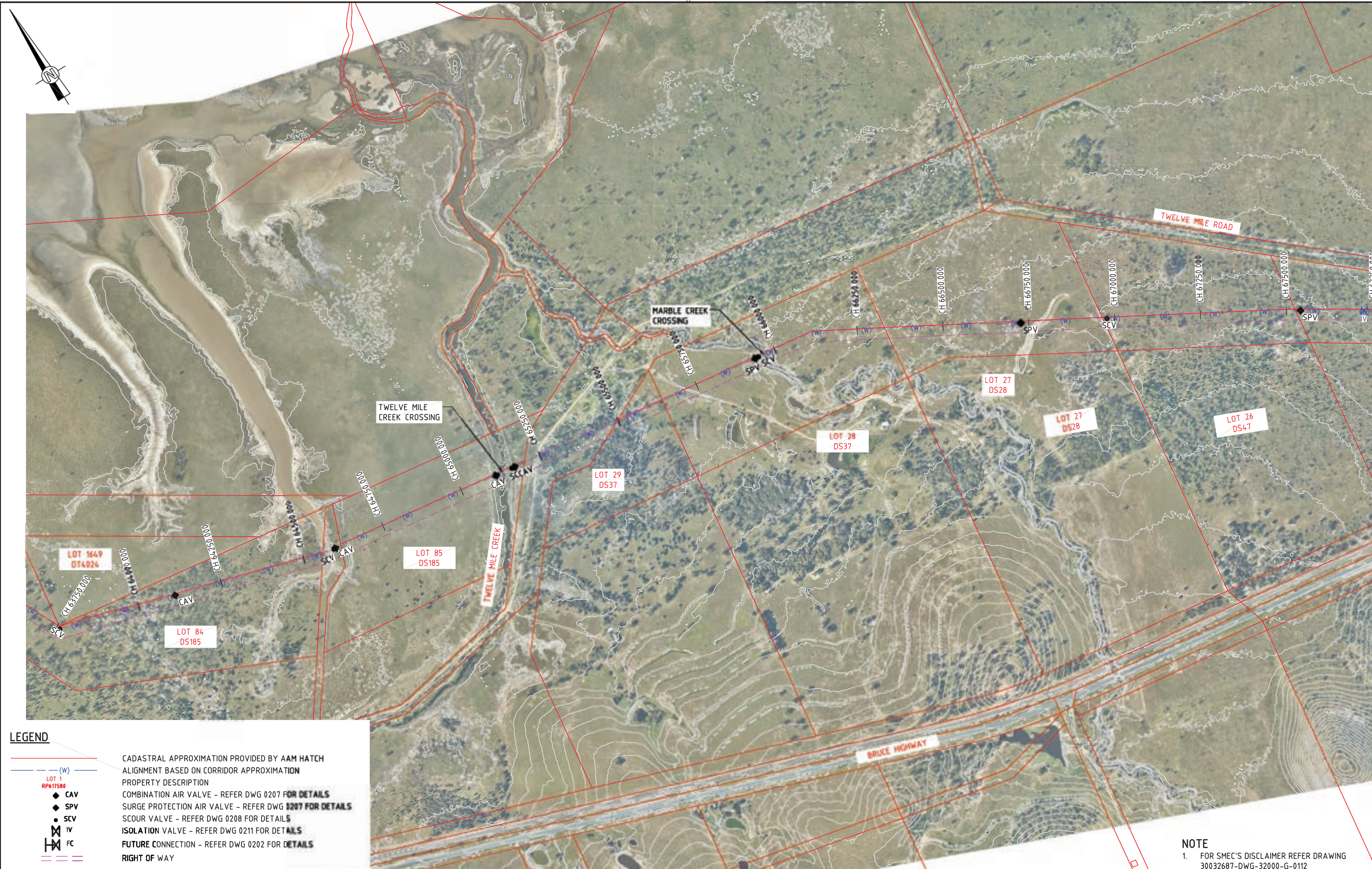
DESIGNER	NAME
DRAFTER	SUCHITH.R
DRAFTING CHECK	C.BOU
DESIGNER	J.W.AGENAAR
DESIGN CHECK	M.SERRANO LOPEZ
PROJECT MANAGER	M.SERRANO LOPEZ
PROJECT DIRECTOR	D.TAYLOR

Member of the Suez Canal Group
 © ABN 47 065 475 149
 LEVEL 6, 480 ST PAULS TERRACE
 FORTITUDE VALLEY QLD 4006
 SMEC PROJECT No 30032687

CLIENT

PROJECT TITLE FITZROY TO GLADSTONE PIPELINE PROJECT 30GLA - ALTON DOWNS TO RAGLAN PIPELINE LAYOUT PLAN CH60500 TO CH64500 SHEET 18			
SCALE 1:5000	PHASE CONCEPT DESIGN	PROJECT / DRAWING No. 30032687-DWG-34100-C-4035	REVISION D

150 mm ON ORIGINAL
A1



LEGEND

	CADASTRAL APPROXIMATION PROVIDED BY AAM HATCH
	ALIGNMENT BASED ON CORRIDOR APPROXIMATION
	PROPERTY DESCRIPTION
	COMBINATION AIR VALVE - REFER DWG 0207 FOR DETAILS
	SPV SURGE PROTECTION AIR VALVE - REFER DWG 0207 FOR DETAILS
	SCV SCOUR VALVE - REFER DWG 0208 FOR DETAILS
	IV ISOLATION VALVE - REFER DWG 0211 FOR DETAILS
	FC FUTURE CONNECTION - REFER DWG 0202 FOR DETAILS
	RIGHT OF WAY

NOTE
 1. FOR SMEC'S DISCLAIMER REFER DRAWING 30032687-DWG-32000-G-0112

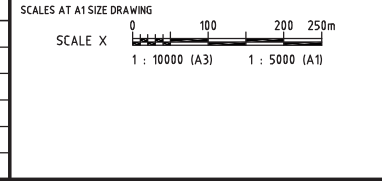
NOT FOR CONSTRUCTION

150 mm ON ORIGINAL
 150
 140
 130
 120
 110
 100
 90
 80
 70
 60
 50
 40
 30
 20
 10
 0

DRAWING FILE LOCATION / NAME
 V:_Vault\Projects\3003\30032687\GFP-DE Project\110_CADD\CAD\DWG\01 30 GL\34100 ALTON DOWNS TO RAGLAN PIPELINE\30032687-DWG-34100-C-4036.dwg

PLOT DATE TIME
 22 Nov 2022 19:31:03

EXTERNAL REFERENCE FILES	REV	DATE	AMENDMENT / REVISION DESCRIPTION	MVR No.	APPROVAL	TITLE	NAME
X_5000_DWG_LEGEND	A	20.08.21	30% CONCEPT DESIGN	006	MSL	DRAFTER	SUCHITH.R
X_30032687_SHEC_A1	B	14.01.22	CONCEPT DESIGN-ECI PHASE	006	MSL	DRAFTING CHECK	C.BOU
X_VALVES	C	30.06.22	OPTIMISED CONCEPT DESIGN	006	MSL	DESIGNER	J.WAGENAAR
X_CONTOUR_INT_INTERVAL	D	18.11.22	UPDATED RIGHT OF WAY	037	MSL	DESIGN CHECK	M.SERRANO LOPEZ
SS_30032687_GFP_Aerial Image						PROJECT MANAGER	M.SERRANO LOPEZ
X_30032687_GFP_Aerial Image_3						PROJECT DIRECTOR	D.TAYLOR
X_30032687_GFP_Alignment_2522							
X_30032687_GFP_ROW							

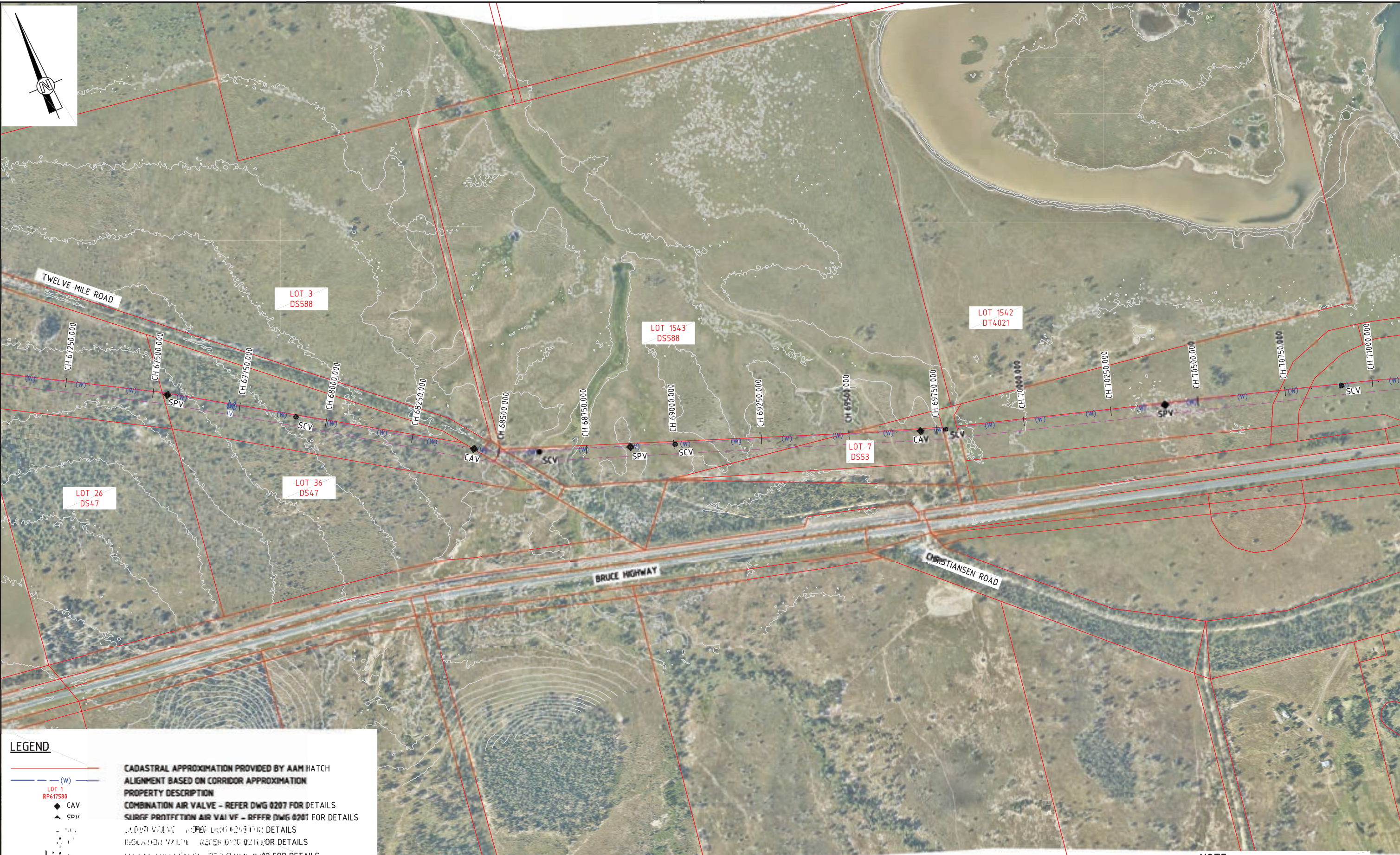


DESIGNER

Member of the Suezgas Jurong Group
 © ABN 47 065 475 149
 LEVEL 6, 480 ST PAULS TERRACE
 FORTITUDE VALLEY QLD 4006
 SMEC PROJECT No 30032687

CLIENT

PROJECT TITLE FITZROY TO GLADSTONE PIPELINE PROJECT 30GLA - ALTON DOWNS TO RAGLAN PIPELINE LAYOUT PLAN CH64500 TO CH68000 SHEET 19			
SCALE 1:5000	PHASE CONCEPT DESIGN	PROJECT / DRAWING No. 30032687-DWG-34100-C-4036	REVISION D



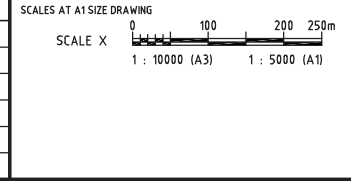
LEGEND

- (W) — CADASTRAL APPROXIMATION PROVIDED BY AAM HATCH
- ALIGNMENT BASED ON CORRIDOR APPROXIMATION
- (W) — PROPERTY DESCRIPTION
- ◆ CAV COMBINATION AIR VALVE - REFER DWG 0207 FOR DETAILS
- ▲ SPV SURGE PROTECTION AIR VALVE - REFER DWG 0207 FOR DETAILS
- SCV SURGE PROTECTION AIR VALVE - REFER DWG 0207 FOR DETAILS
- (W) — RIGHT OF WAY

NOTE
 1. FOR SMEC'S DISCLAIMER REFER DRAWING 30032687-DWG-32000-G-0112

NOT FOR CONSTRUCTION

DRAWING FILE LOCATION / NAME V:_Vault\Projects\3003\30032687\GFP-DE Project\110_CADD\CAD\DWG\01 30 GL\34100 ALTON DOWNS TO RAGLAN PIPELINE\30032687-DWG-34100-C-4037.dwg		PLOT DATE 22 Nov 2022		TIME 19:34:37	
REV	DATE	AMENDMENT / REVISION DESCRIPTION	MVR No.	APPROVAL	TITLE
A	20.08.21	30% CONCEPT DESIGN	006	MSL	DRAFTER
B	14.01.22	CONCEPT DESIGN-ECI PHASE	006	MSL	DRAFTING CHECK
C	30.06.22	OPTIMISED CONCEPT DESIGN	006	MSL	DESIGNER
D	18.11.22	UPDATED RIGHT OF WAY	037	MSL	DESIGN CHECK
					PROJECT MANAGER
					PROJECT DIRECTOR



DESIGNER

SMEC
 Member of the Stantec Group
 ABN 47 065 475 149
 LEVEL 6, 480 ST PAULS TERRACE
 FORTITUDE VALLEY QLD 4006
 SMEC PROJECT No 30032687

CLIENT

Gladstone Area Water Board

PROJECT TITLE FITZROY TO GLADSTONE PIPELINE PROJECT 30GLA - ALTON DOWNS TO RAGLAN PIPELINE LAYOUT PLAN CH68000 TO CH71500 SHEET 20			
SCALE 1:5000	PHASE CONCEPT DESIGN	PROJECT / DRAWING No. 30032687-DWG-34100-C-4037	REVISION D

150 mm ON ORIGINAL
 A1