

LEGEND	
	CADASTRAL APPROXIMATION PROVIDED BY AAM HATCH
	ALIGNMENT BASED ON CORRIDOR APPROXIMATION
	PROPERTY DESCRIPTION
	COMBINATION AIR VALVE - REFER DWG 0207 FOR DETAILS
	SCOUR VALVE - REFER DWG 0208 FOR DETAILS
	ISOLATION VALVE - REFER DWG 0211 FOR DETAILS
	FUTURE CONNECTION - REFER DWG 0202 FOR DETAILS
	RIGHT OF WAY

**NOTE**  
 1. FOR SMEC'S DISCLAIMER REFER DRAWING 30032687-DWG-32000-G-0112

**NOT FOR CONSTRUCTION**

DRAWING FILE LOCATION / NAME V:\_Vault\Projects\3003\30032687\GFP-DE Project\110_CADD\CAD\DWG\01 30 GL\34100 ALTON DOWNS TO RAGLAN PIPELINE\30032687-DWG-34100-C-4038.dwg		PLOT DATE 23 Nov 2022		TIME 10:07:59	
EXTERNAL REFERENCE FILES	REV	DATE	AMENDMENT / REVISION DESCRIPTION	MVR No.	APPROVAL
X:\34300_PSBUILDING_PIPE PLAN	A	20.08.21	30% CONCEPT DESIGN	006	MSL
X:\30032687_LEGEND	B	14.01.22	CONCEPT DESIGN-ECI PHASE	006	MSL
X:\30032687_SHEC_A1	C	30.06.22	OPTIMISED CONCEPT DESIGN	006	MSL
X:\30032687_GFP_Aerial Image	D	10.10.22	RIGHT OF WAY	036	MSL
X:\30032687_GFP_Row					
X:\30032687_CROSSINGS					
X:\30032687_GFP_Aerial Image_4					
X:\30032687_GFP_Aerial Image_3					

SCALE X	0	100	200	250m
1 : 10000 (A3)				
1 : 5000 (A1)				

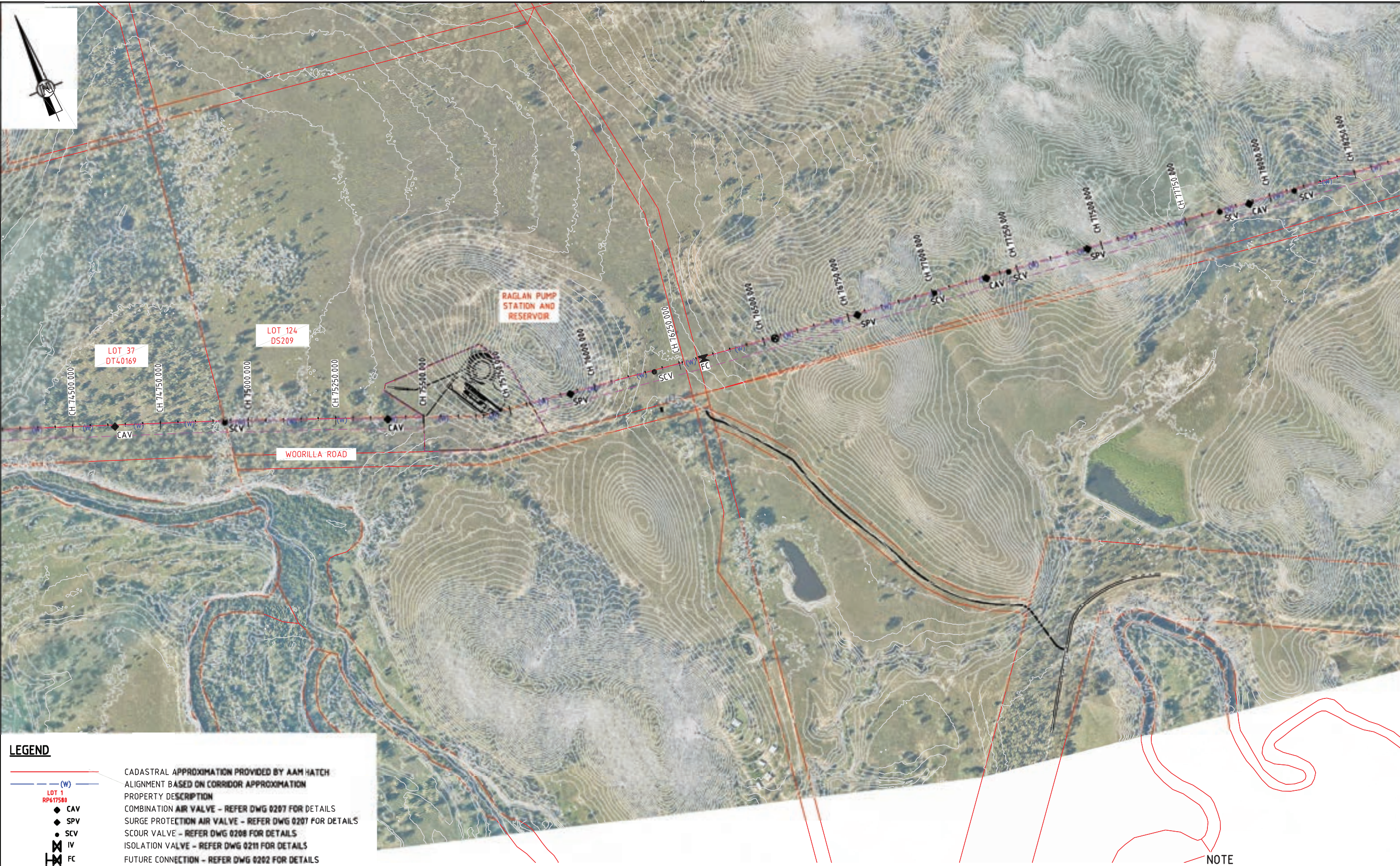
DESIGNER	NAME
DRAFTER	SUCHITH.R
DRAFTING CHECK	C.BOU
DESIGNER	J.WAGENAAR
DESIGN CHECK	M.SERRANO LOPEZ
PROJECT MANAGER	M.SERRANO LOPEZ
PROJECT DIRECTOR	D.TAYLOR

**SMC**  
 Member of the Surland Jurong Group  
 © ABN 47 065 475 149  
 LEVEL 6, 480 ST PAULS TERRACE  
 FORTITUDE VALLEY QLD 4006  
 SMEC PROJECT No 30032687

PROJECT TITLE FITZROY TO GLADSTONE PIPELINE PROJECT 30GLA - ALTON DOWNS TO RAGLAN PIPELINE LAYOUT PLAN CH71500 TO CH75000 SHEET 21			
SCALE 1:5000	PHASE CONCEPT DESIGN	PROJECT / DRAWING No. 30032687-DWG-34100-C-4038	REVISION D

150 mm ON ORIGINAL  
A1





**LEGEND**

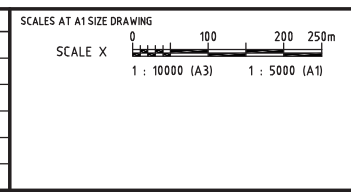
	CADASTRAL APPROXIMATION PROVIDED BY AAM HATCH
	ALIGNMENT BASED ON CORRIDOR APPROXIMATION
	PROPERTY DESCRIPTION
	COMBINATION AIR VALVE - REFER DWG 0207 FOR DETAILS
	SURGE PROTECTION AIR VALVE - REFER DWG 0207 FOR DETAILS
	SCOUR VALVE - REFER DWG 0208 FOR DETAILS
	ISOLATION VALVE - REFER DWG 0211 FOR DETAILS
	FUTURE CONNECTION - REFER DWG 0202 FOR DETAILS
	RIGHT OF WAY

**NOTE**  
1. FOR SMEC'S DISCLAIMER REFER DRAWING 30032687-DWG-32000-G-0112

**NOT FOR CONSTRUCTION**

150 mm ON ORIGINAL  
A1

DRAWING FILE LOCATION / NAME V:\_Vault\Projects\3003\30032687\GFP-DE Project\110_CADD\CAD\DWG\01 30 GL\34100 ALTON DOWNS TO RAGLAN PIPELINE\30032687-DWG-34100-C-4039.dwg		PLOT DATE 22 Nov 2022		TIME 19:39:55	
EXTERNAL REFERENCE FILES	REV	DATE	AMENDMENT / REVISION DESCRIPTION	MWR No.	APPROVAL
X_34300_PSBUILDING_PIPE_PLAN	A	20.08.21	30% CONCEPT DESIGN	006	MSL
X_34300_CIVIL_LAYOUT	B	14.01.22	CONCEPT DESIGN-ECI PHASE	006	MSL
X_34300_PSBUILDING_SLAB	C	30.06.22	OPTIMISED CONCEPT DESIGN	006	MSL
X_5000_DWG_LEGEND	D	18.11.22	UPDATED RIGHT OF WAY	039	MSL
X_30032687_SPECS_A1					
X_VALVES					
X_CONTOUR 1m INTERVAL					
X_DCB					
SS_30032687_GFP_Aerial Image					
X_30032687_GFP_Aerial Image_L					
X_30032687_GFP_Alignment_2222					
X_30032687_GFP_RDW					



DESIGNER

Member of the Surlana Jurong Group  
© ABN 47 065 475 149  
LEVEL 6, 480 ST PAULS TERRACE  
FORTITUDE VALLEY QLD 4006  
SMEC PROJECT No 30032687

CLIENT

PROJECT TITLE FITZROY TO GLADSTONE PIPELINE PROJECT 30GLA - ALTON DOWNS TO RAGLAN PIPELINE LAYOUT PLAN CH75000 TO CH78500 SHEET 22			
SCALE 1:5000	PHASE CONCEPT DESIGN	PROJECT / DRAWING No. 30032687-DWG-34100-C-4039	REVISION D



**STANDARD PIPELINE NOTES:**

- SERVICES SHOWN ARE APPROXIMATE ONLY AND ARE THOSE RECEIVED FROM DBYD TO DATE (VALID FOR LIMITED PERIOD). EXACT LOCATION TO BE DETERMINED ON SITE.
- BOREHOLES SHOWN ARE APPROXIMATE ONLY AND ARE THOSE RECEIVED TO DATE. EXACT LOCATION TO BE DETERMINED ON SITE.
- MINIMUM PIPELINE COVER = 750mm (EXCEPT IN FLOOD PRONE AREAS)
- MINIMUM PIPELINE COVER IN FLOOD PRONE AREAS = 1100mm (CH 4100 TO CH 44300 & CH 49400 TO 75000)
- MAXIMUM PIPELINE COVER = 3500mm
- MINIMUM PIPELINE COVER UNDER ROADS = 900mm
- MINIMUM PIPELINE COVER UNDER CREEKS = 900mm
- MAXIMUM DESIGN PRESSURE FOR PIPELINE SECTION = 210m

**STANDARD CROSSING NOTES:**

- REFER TO PIPELINE LONG PROFILE DRAWINGS FOR DETAILS OF PIPE AND FITTINGS
- ALL PIPE JOINTS TO BE WELDED WITHIN CONCRETE ENCASMENT SECTION AND ENCASING PIPE
- CLASS AND DETAILS OF ENCASING PIPE TO BE DETERMINED BY SPECIALIST DRILLING CONTRACTOR.
- REINFORCED CONCRETE ENCASING PIPE TO BE USED FOR RAIL CROSSINGS AND COMBINED ROAD & RAIL CROSSINGS.
- FOR ALL OTHER CROSSINGS, TYPE OF ENCASING PIPE TO BE DETERMINED BY SPECIALIST DRILLING CONTRACTOR AND APPROVED BY PRINCIPAL CONTRACTOR.
- ENCASING PIPE TO BE INSTALLED BY THRUST BORING OR MICRO TUNNELLING METHOD.
- ENCASING PIPE TO EXTEND MIN 2m PAST TOE OF BATTER FOR ROAD/RAIL EMBANKMENT.
- ENCASING PIPE TO EXTEND MIN 2.0m PAST EDGE OF CREEK BANK

**SUMMARY TABLE OF PIPE SECTION LENGTHS**

CHAINAGE	CHAINAGE	LENGTH	DESCRIPTION
4006.508	56501.430	52494.922	ALTON DOWNS P.S. TO PROPOSED REALIGNMENT (INKERMAN CREEK)
56501.430 = 0.000	693.388	693.388	PROPOSED REALIGNMENT (INKERMAN CREEK)
693.388 = 57178.483	75985.662	18807.179	PROPOSED REALIGNMENT (INKERMAN CREEK) TO RAGLAN P.S.

**SETOUT NOTE:**

- START OF PIPELINE CONTROL LINE AT CH 4006.508 COINCIDES WITH THE SOUTHERN BOUNDARY OF LOT 40 PL644.

**LEGEND**

	CADASTRAL APPROXIMATION BASED ON ASSUMPTION FROM IMAGE INFORMATION
	ALTON DOWNS EASEMENT CORRIDOR APPROXIMATION BASED ON CADASTRAL APPROXIMATION
	STANWELL-GLADSTONE INFRASTRUCTURE CORRIDOR APPROXIMATION BASED ON CADASTRAL APPROXIMATION
	PRELIMINARY ALIGNMENT BASED ON CORRIDOR APPROXIMATION
	PROPERTY DESCRIPTION
	COMBINATION AIR VALVE (PLAN & L.S.) - REFER DWG 30032656-DWG-34000-C-0207 FOR DETAILS
	SURGE PROTECTION AIR VALVE (PLAN & L.S.) - REFER DWG 30032656-DWG-34000-C-0207 FOR DETAILS
	SCOUR VALVE (PLAN & L.S.) - REFER DWG 30032656-DWG-34000-C-0208 FOR DETAILS
	ISOLATION VALVE (PLAN & L.S.) - REFER DWG 30032656-DWG-34000-C-0211 FOR DETAILS
	FUTURE CONNECTION (PLAN & L.S.) - REFER DWG 30032656-DWG-34000-C-0202 FOR DETAILS
	MAGMASTER FLOWMETER (PLAN) - REFER DWG 30032656-DWG-34000-C-0209 FOR DETAILS
V(-) 11.25°B + 3.83°	VERTICAL BEND WITH PIPE DEFLECTIONS
V-3.83°	VERTICAL PIPE DEFLECTIONS
H(-) 11.25°B + 3.83°	HORIZONTAL BEND WITH PIPE DEFLECTIONS
H-3.83°	HORIZONTAL PIPE DEFLECTIONS
	EXISTING OPTIC FIBRE CABLE
	EXISTING GAS SERVICE (ALINTA)
	EXISTING GAS SERVICE (APA GROUP)
	EXISTING ENERGEX SERVICE
	EXISTING TELSTRA SERVICE

**NOTE**

- FOR SMEC'S DISCLAIMER REFER DRAWING 30032687-DWG-32000-G-0112

**NOT FOR CONSTRUCTION**

150 mm ON ORIGINAL

A1

DRAWING FILE LOCATION / NAME V:\_Vault\Projects\3003\30032687\GFP-DE Project\110_CADD\CAD\DWG\01 30 GL\34100 ALTON DOWNS TO RAGLAN PIPELINE\30032687-DWG-34100-C-4040.dwg	PLOT DATE 22 Nov 2022	TIME 19:41:42
--	--------------------------	------------------

EXTERNAL REFERENCE FILES	REV	DATE	AMENDMENT / REVISION DESCRIPTION	MWR No.	APPROVAL	TITLE	NAME
X_30032656_SMEC_A1	A	20.08.21	30% CONCEPT DESIGN	006	MSL	DRAFTER	SUCHITH.R
	B	14.01.22	CONCEPT DESIGN-ECI PHASE	006	MSL	DRAFTING CHECK	C.BOU
	C	30.06.22	OPTIMISED CONCEPT DESIGN	006	MSL	DESIGNER	J.WAGENAAR
						DESIGN CHECK	M.SERRANO LOPEZ
						PROJECT MANAGER	M.SERRANO LOPEZ
						PROJECT DIRECTOR	D.TAYLOR

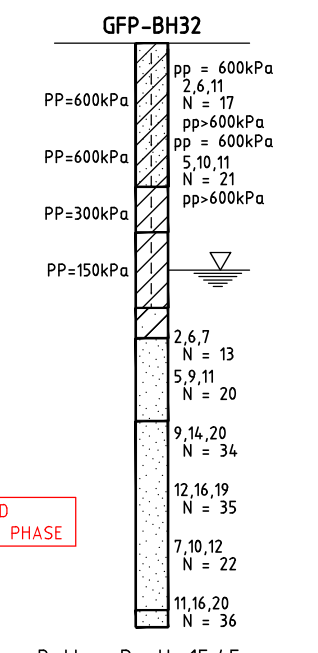
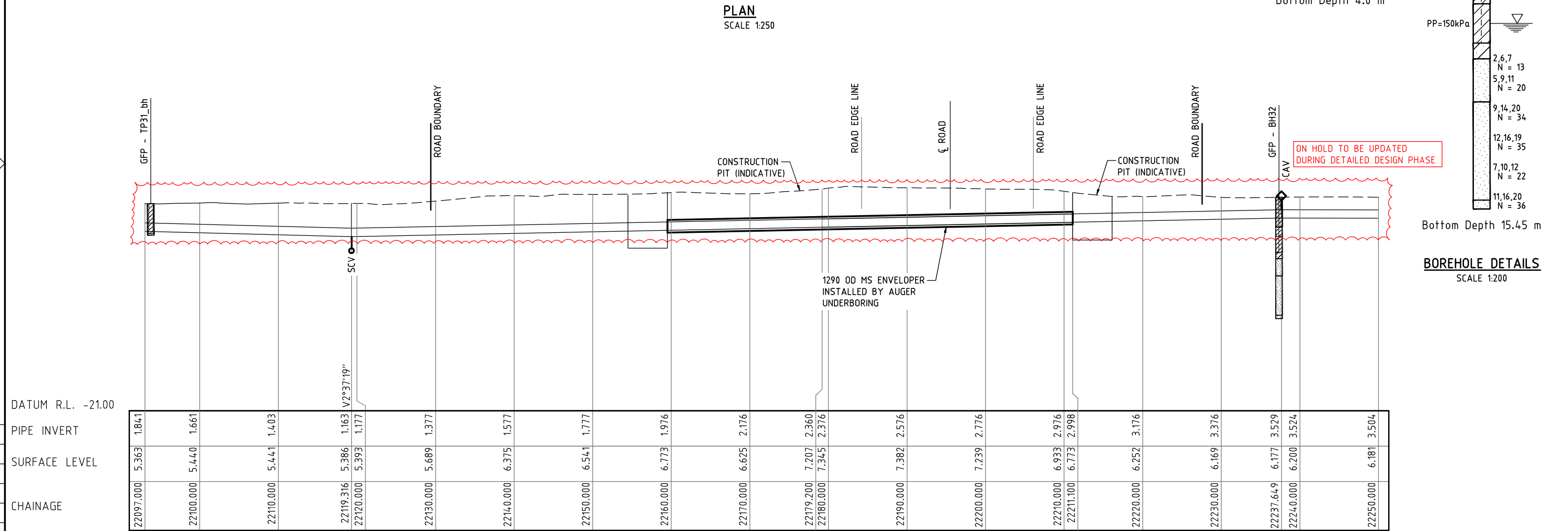
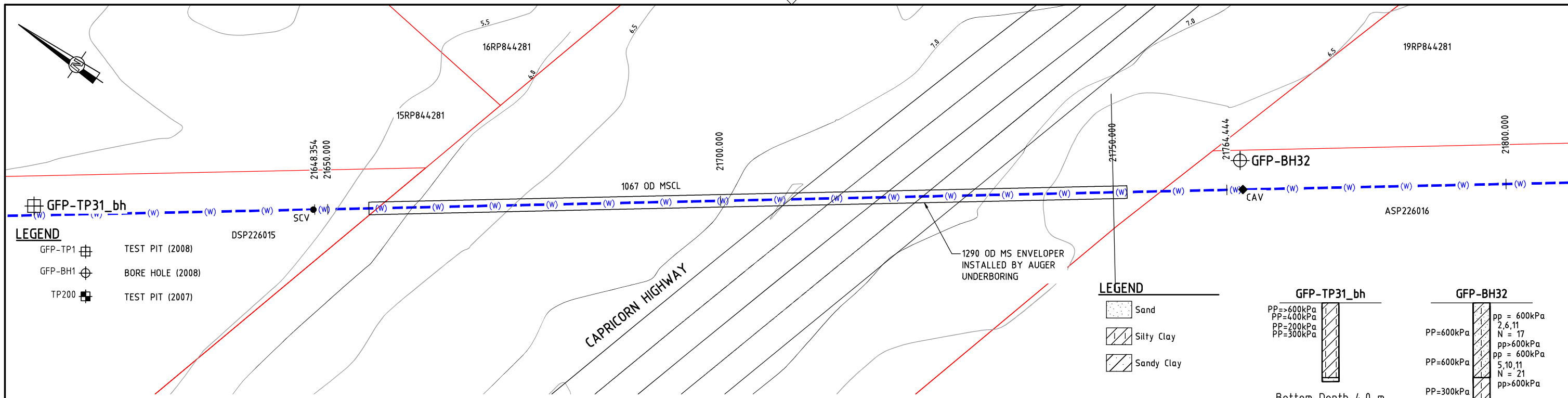
SCALES AT A1 SIZE DRAWING	DESIGNER
	<p>Member of the Surbana Jurong Group © ABN 47 065 475 149 LEVEL 6, 480 ST PAULS TERRACE FORTITUDE VALLEY QLD 4006 SMEC PROJECT No 30032687</p>

CLIENT
<p>Gladstone Area Water Board</p>

PROJECT TITLE
FITZROY TO GLADSTONE PIPELINE PROJECT 30GLA - ALTON DOWNS TO RAGLAN PIPELINE PLAN AND LONGITUDINAL SECTION GENERAL NOTES & LEGEND SHEET 1

SCALE	PHASE	PROJECT / DRAWING No.	REVISION
	CONCEPT DESIGN	30032687-DWG-34100-C-4040	C





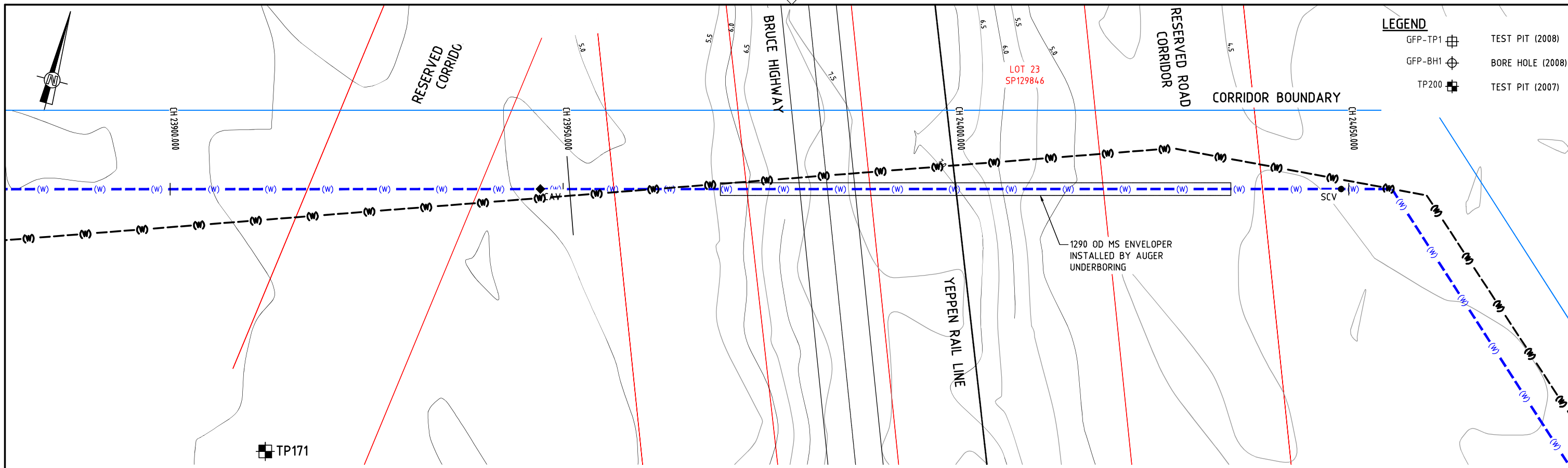
NOTE  
1. FOR SMEC'S DISCLAIMER REFER DRAWING 30032687-DWG-32000-G-0112

**NOT FOR CONSTRUCTION**

DRAWING FILE LOCATION / NAME V:\_Vault\Projects\3003\30032687\GFP-DE Project\110_CADD\CAD\DWG\0130 GL\34100 ALTON DOWNS TO RAGLAN PIPELINE\30032687-DWG-34100-U-4191.dwg		PLLOT DATE 21 Nov 2022	TIME 15:19:44
EXTERNAL REFERENCE FILES X:\CONTOURS_CORRIDOR X:\30032687_SHEC_A1 X:\30032687_GFP_Alignment_2022 X:\JCD		REV	DATE
AMENDMENT / REVISION DESCRIPTION		WVR No.	APPROVAL
A 20.08.21 30% CONCEPT DESIGN		006	MSL
B 14.01.22 CONCEPT DESIGN-ECI PHASE		006	MSL
C 20.09.22 OPTIMISED CONCEPT DESIGN		035	DT
D 18.11.22 UPDATED RIGHT OF WAY		037	MSL
DESIGNER <i>B.BEALING</i>		DESIGNER	
DESIGN CHECK <i>M.SERRANO LOPEZ</i>		DESIGN CHECK	
PROJECT MANAGER <i>M.SERRANO LOPEZ</i>		PROJECT MANAGER	
PROJECT DIRECTOR <i>D.TAYLOR</i>		PROJECT DIRECTOR	
SCALES AT A1 SIZE DRAWING		DESIGNER	
SCALE 1:250		Member of the Surbana Jurong Group © ABN 47 065 475 149	
SCALE 1:200		LEVEL 6, 480 ST PAULS TERRACE FORTITUDE VALLEY QLD 4006 SMEC PROJECT No 30032687	
CLIENT		PROJECT TITLE	
Gladstone Area Water Board		FITZROY TO GLADSTONE PIPELINE PROJECT 30GLA - ALTON DOWNS TO RAGLAN PIPELINE PLAN AND LONGITUDINAL SECTION CAPRICORN HIGHWAY CROSSING SHEET 3	
SCALE	PHASE	PROJECT / DRAWING No.	REVISION
	CONCEPT DESIGN	30032687-DWG-34100-U-4191	D

150 mm ON ORIGINAL





**LEGEND**

GFP-TP1	TEST PIT (2008)
GFP-BH1	BORE HOLE (2008)
TP200	TEST PIT (2007)

**TP171**

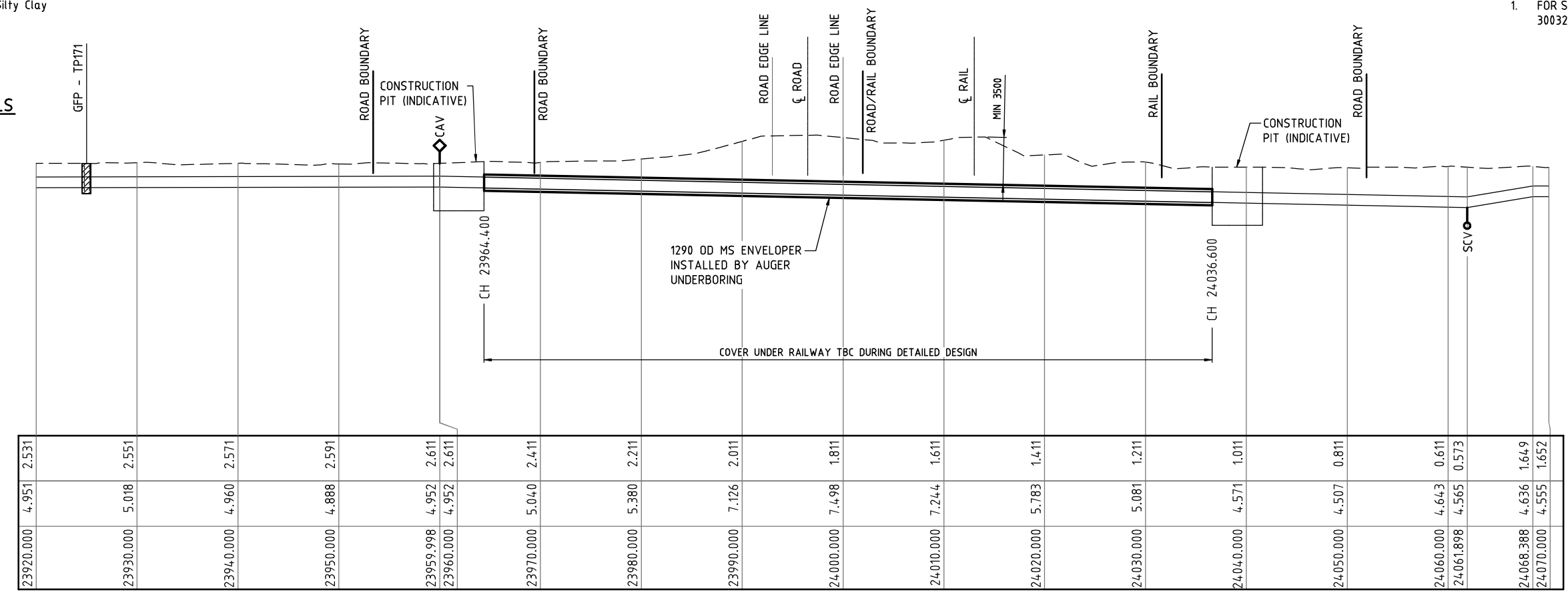
PP=>600kPa	PP=420kPa
PP=>600kPa	PP=530kPa
PP=570kPa	PP=>600kPa

**LEGEND**

[Symbol]	Silty Clay
----------	------------

**BOREHOLE DETAILS**  
SCALE 1:200

**NOTE**  
1. FOR SMEC'S DISCLAIMER REFER DRAWING 30032687-DWG-32000-G-0112



**LONGITUDINAL SECTION**  
SCALE 1:250

DATUM R.L. -22.00

PIPE INVERT	23920.000	2.531
SURFACE LEVEL	23930.000	5.018
CHAINAGE	23940.000	4.960
	23950.000	4.888
	23959.998	4.952
	23960.000	4.952
	23970.000	5.040
	23980.000	5.380
	23990.000	7.126
	24000.000	7.498
	24010.000	7.244
	24020.000	5.783
	24030.000	5.081
	24040.000	4.571
	24050.000	4.507
	24060.000	4.643
	24061.898	4.565
	24068.388	4.636
	24070.000	4.555

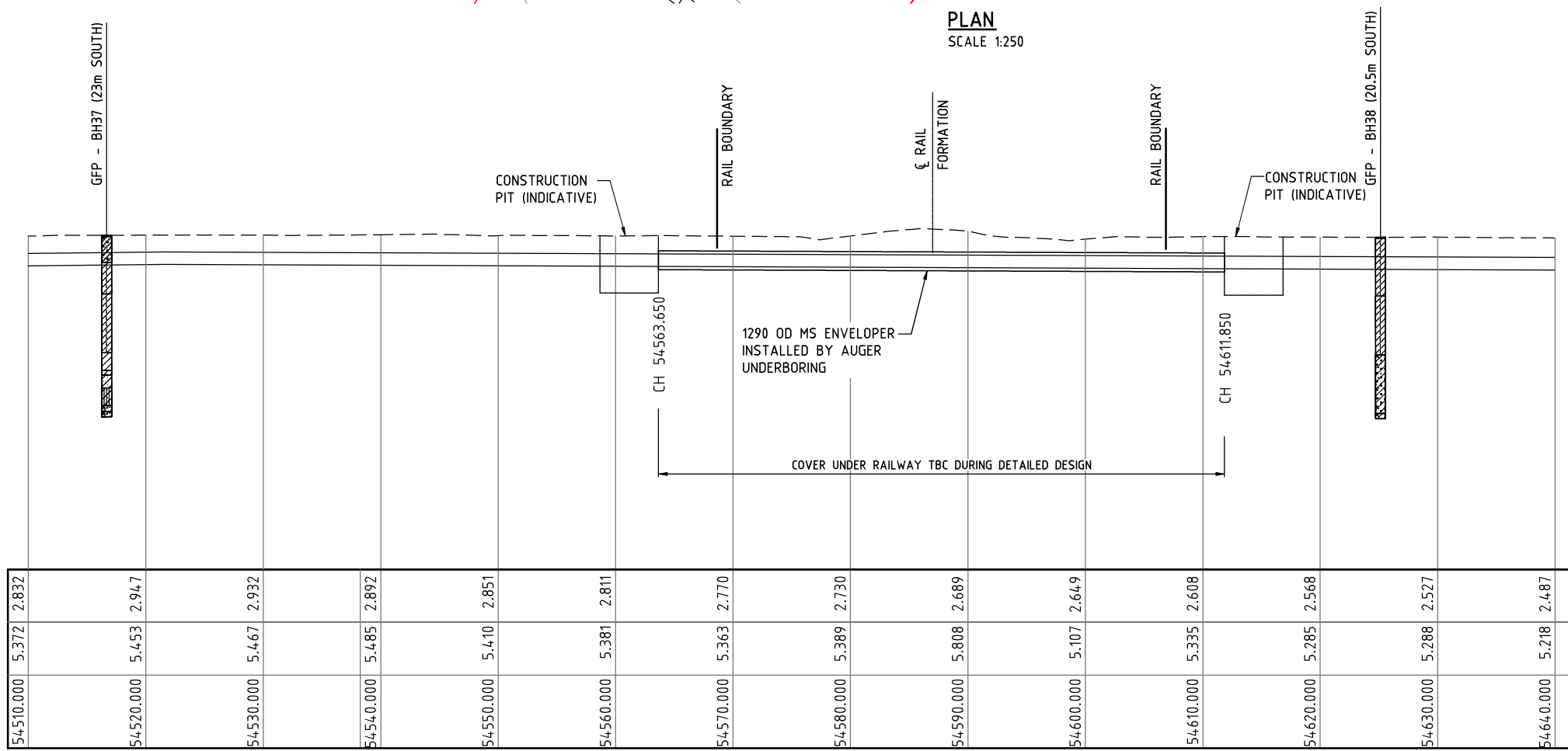
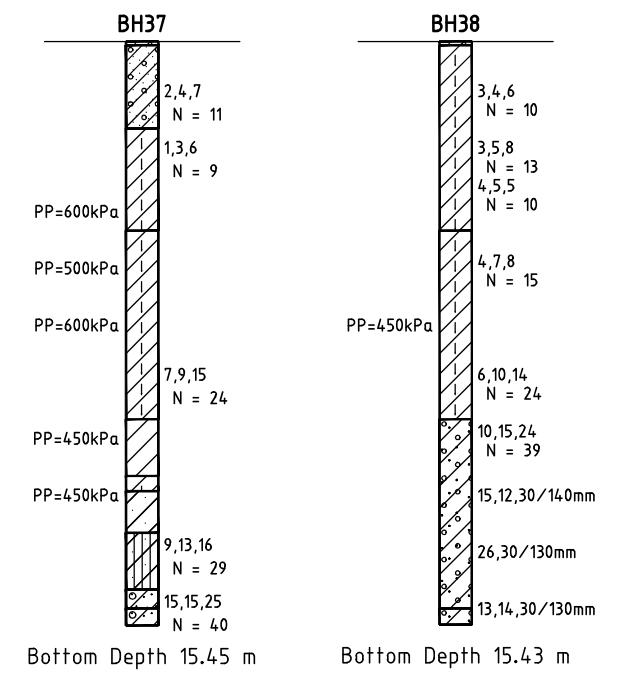
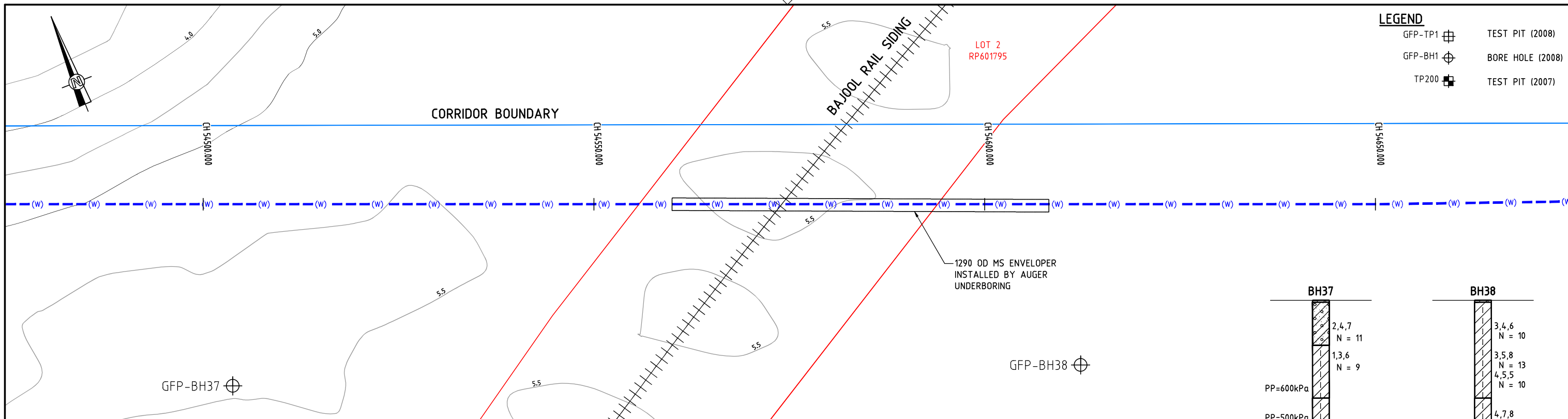
**NOT FOR CONSTRUCTION**

DRAWING FILE LOCATION / NAME V:\_Vault\Projects\3003\30032687\GFP-DE Project\110_CADD\CAD\DWG\0130 GL\34100 ALTON DOWNS TO RAGLAN PIPELINE\30032687-DWG-34100-U-4192.dwg		PLLOT DATE 21 Nov 2022	TIME 15:20:18
EXTERNAL REFERENCE FILES X_ASSUMED_DCB X_CONTIGUOUS_CORRIDOR X_30032687_SHEE_A1 X_ASSUMED_PIPE_CONTROL X_30032687_GFP_Alignment	REV A B C D	DATE 20.08.21 14.01.22 23.08.22 18.11.22	AMENDMENT / REVISION DESCRIPTION 30% CONCEPT DESIGN CONCEPT DESIGN-ECI PHASE OPTIMISED CONCEPT DESIGN UPDATED RIGHT OF WAY
WVR No. 006 006 032 037	APPROVAL MSL MSL DT MSL	TITLE DRAFTER DRAFTING CHECK DESIGNER DESIGN CHECK PROJECT MANAGER PROJECT DIRECTOR	NAME SUCHITHR DILIP.MG B.BEALING M.SERRANO LOPEZ M.SERRANO LOPEZ D.TAYLOR
SCALES AT A1 SIZE DRAWING SCALE 1:250 SCALE 1:200		DESIGNER SMC Member of the Surbana Jurong Group © ABN 47 065 475 149 LEVEL 6, 480 ST PAULS TERRACE FORTITUDE VALLEY QLD 4008 SMC PROJECT No 30032687	CLIENT Gladstone Area Water Board
PROJECT TITLE FITZROY TO GLADSTONE PIPELINE PROJECT 30GLA - ALTON DOWNS TO RAGLAN PIPELINE PLAN AND LONGITUDINAL SECTION BRUCE HIGHWAY / YEPPEN RAIL LINE CROSSING SHEET 4		SCALE CONCEPT DESIGN	PHASE CONCEPT DESIGN
PROJECT / DRAWING No. 30032687-DWG-34100-U-4192		REVISION D	



**LEGEND**

GFP-TP1		TEST PIT (2008)
GFP-BH1		BORE HOLE (2008)
TP200		TEST PIT (2007)



**BOREHOLE DETAILS**  
SCALE 1:200

**LEGEND**

	Silty Clay
	Silt
	Gravel Sandy
	Clay

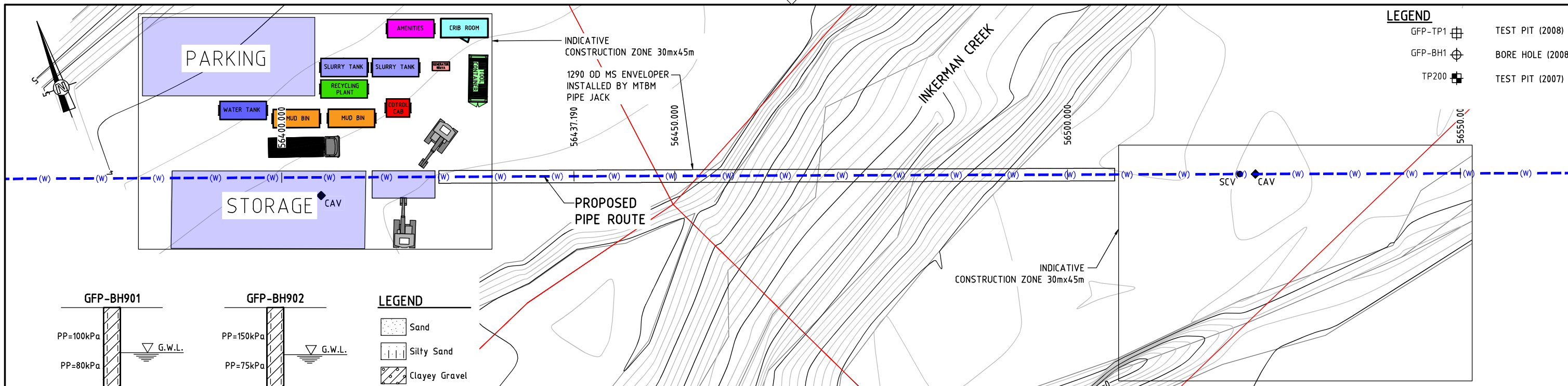
**NOTE**  
1. FOR SMEC'S DISCLAIMER REFER DRAWING 30032687-DWG-32000-G-0112

**NOT FOR CONSTRUCTION**

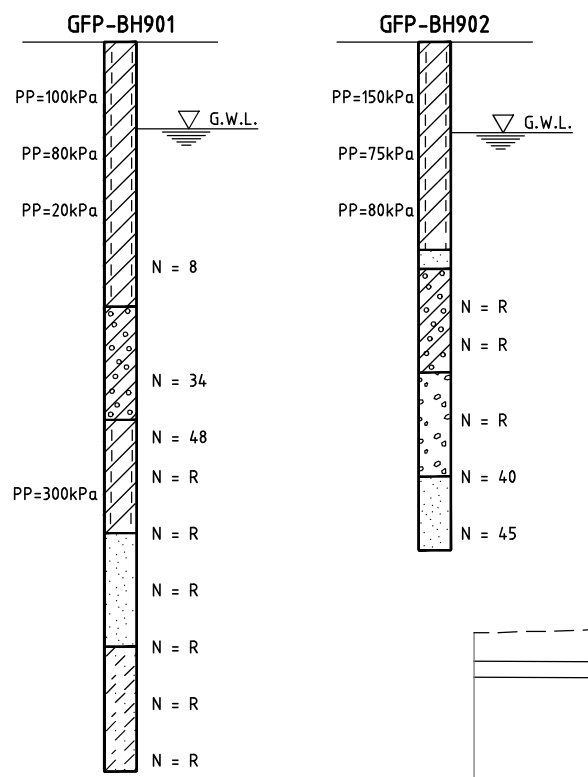
150 mm ON ORIGINAL  
A1

DRAWING FILE LOCATION / NAME V:\_Vault\Projects\3003\30032687\GFP-DE Project\110_CADD\CAD\DWG\0130 GL\34100 ALTON DOWNS TO RAGLAN PIPELINE\30032687-DWG-34100-U-4193.dwg		DATE 21 Nov 2022	TIME 15:20:50
EXTERNAL REFERENCE FILES X_ASSUMED_ODC X_CONTOURS_CORRIDOR X_30032687_SHEE_A1 X_ASSUMED_PIPE_CONTROL	REV	DATE	AMENDMENT / REVISION DESCRIPTION
	A	20.08.21	30% CONCEPT DESIGN
	B	14.01.22	CONCEPT DESIGN-ECI PHASE
	C	30.06.22	OPTIMISED CONCEPT DESIGN
	D	18.11.22	UPDATED RIGHT OF WAY
	WVR No.	006	
	APPROVAL	MSL	TITLE
		MSL	DRAFTER <i>SUCHITHR</i>
		DT	DRAFTING CHECK <i>DILIP.MG</i>
		MSL	DESIGNER <i>B.BEALING</i>
			DESIGN CHECK <i>M.SERRANO LOPEZ</i>
			PROJECT MANAGER <i>M.SERRANO LOPEZ</i>
			PROJECT DIRECTOR <i>D.TAYLOR</i>
SCALES AT A1 SIZE DRAWING		DESIGNER	
SCALE 1:250			
SCALE 1:200		Member of the Surbana Jurong Group © ABN 47 065 475 149	
		LEVEL 8, 480 ST PAULS TERRACE FORTITUDE VALLEY QLD 4006 SMEC PROJECT No 30032687	
		CLIENT	
PROJECT TITLE FITZROY TO GLADSTONE PIPELINE PROJECT 30GLA - ALTON DOWNS TO RAGLAN PIPELINE PLAN AND LONGITUDINAL SECTION BAJOOIL RAIL CROSSING SHEET 5			
SCALE	PHASE CONCEPT DESIGN	PROJECT / DRAWING No. 30032687-DWG-34100-U-4193	REVISION D



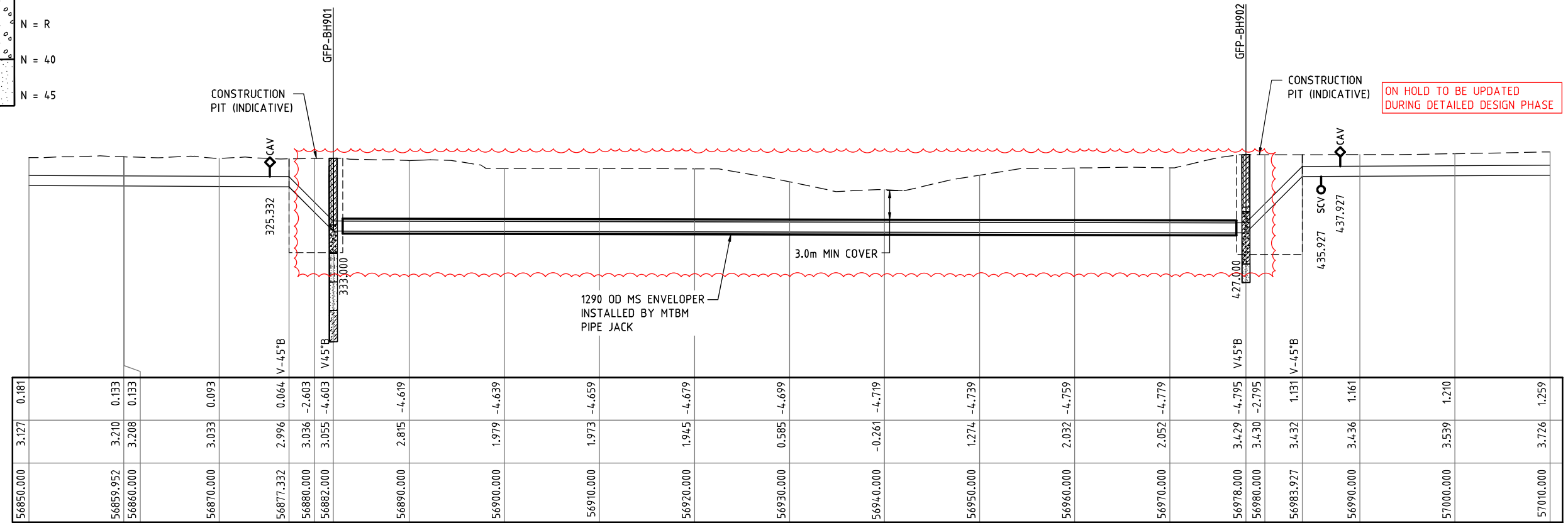


- LEGEND**
- GFP-TP1 TEST PIT (2008)
  - GFP-BH1 BORE HOLE (2008)
  - TP200 TEST PIT (2007)



- LEGEND**
- Sand
  - Silty Sand
  - Clayey Gravel
  - Silty Clay
  - Clayey Sand
  - Gravel

**PLAN**  
SCALE 1:250



**LONGITUDINAL SECTION**  
SCALE 1:250

DATUM R.L. -20.00

PIPE INVERT

SURFACE LEVEL

CHAINAGE

CHAINAGE	PIPE INVERT	SURFACE LEVEL
56850.000	0.181	3.127
56859.952	0.133	3.210
56860.000	0.133	3.208
56870.000	0.093	3.033
56877.332	0.064	2.996
56880.000	-2.603	3.036
56882.000	-4.603	3.055
56890.000	-4.619	2.815
56900.000	-4.639	1.979
56910.000	-4.659	1.973
56920.000	-4.679	1.945
56930.000	-4.699	0.585
56940.000	-4.719	-0.261
56950.000	-4.739	1.274
56960.000	-4.759	2.032
56970.000	-4.779	2.052
56978.000	-4.795	3.429
56980.000	-2.795	3.430
56983.927	1.131	3.432
56990.000	1.161	3.436
57000.000	1.210	3.539
57010.000	1.259	3.726

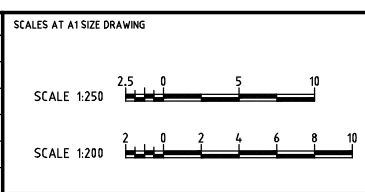
**NOTE**  
1. FOR SMEC'S DISCLAIMER REFER DRAWING 30032687-DWG-32000-G-0112

**NOT FOR CONSTRUCTION**

150 mm ON ORIGINAL

DRAWING FILE LOCATION / NAME V:\_Vault\Projects\3003\30032687-GFP-DE Project\110_CADD\CAD\DWG\0130 GL\34100 ALTON DOWNS TO RAGLAN PIPELINE\30032687-DWG-34100-U-4194.dwg		PLLOT DATE 21 Nov 2022	TIME 15:21:25
EXTERNAL REFERENCE FILES	REV	DATE	AMENDMENT / REVISION DESCRIPTION
X:\Inkerman_Crossin X:\Inkerman_CK_SURVEY X:\30032687_SHEC_A1 X:\DCD8 X:\30032687_GFP_Alignment_2022 X:\ASSIGNED_Pipe_CONTRIA	A	20.08.21	30% CONCEPT DESIGN
	B	14.01.22	CONCEPT DESIGN-ECI PHASE
	C	19.09.22	OPTIMISED CONCEPT DESIGN
	D	18.11.22	UPDATED RIGHT OF WAY

WVR No.	APPROVAL	TITLE	NAME
006	MSL	DRAFTER	SUCHITHR
006	MSL	DRAFTING CHECK	DILIP.MG
034	DT	DESIGNER	B.BEALING
037	MSL	DESIGN CHECK	M.SERRANO LOPEZ
		PROJECT MANAGER	M.SERRANO LOPEZ
		PROJECT DIRECTOR	D.TAYLOR



DESIGNER

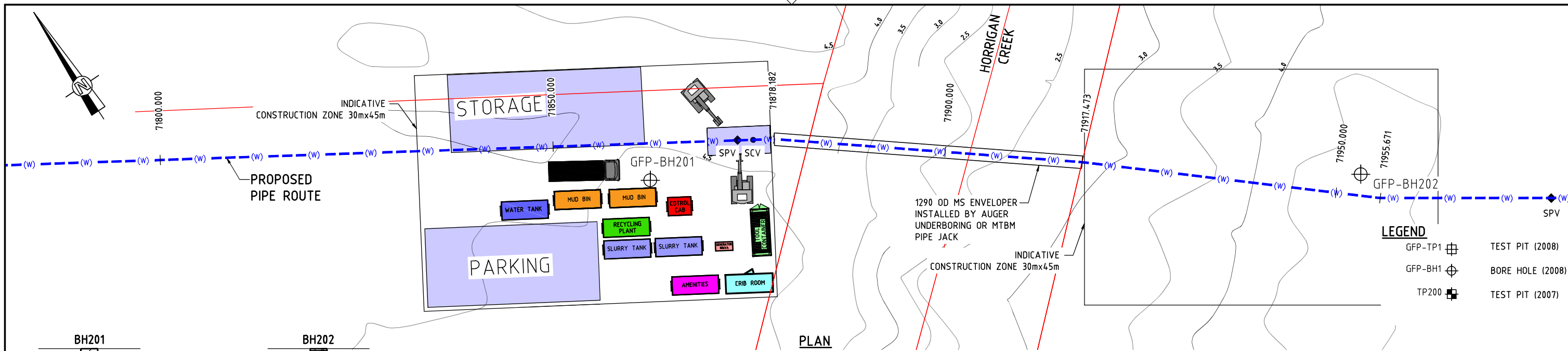
Member of the Surbana Jurong Group  
© ABN 47 065 475 149  
LEVEL 6, 480 ST PAULS TERRACE  
FORTITUDE VALLEY QLD 4006  
SMEC PROJECT No 30032687

CLIENT

Gladstone Area Water Board

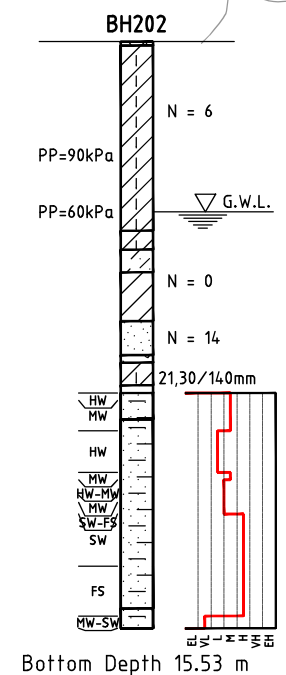
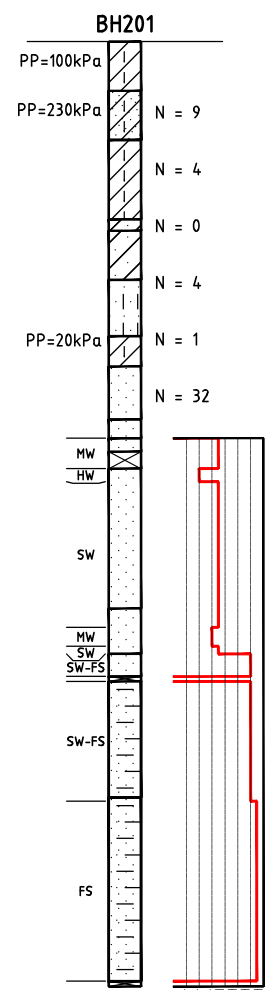
PROJECT TITLE FITZROY TO GLADSTONE PIPELINE PROJECT 30GLA - ALTON DOWNS TO RAGLAN PIPELINE PLAN AND LONGITUDINAL SECTION INKERMAN CREEK CROSSIN SHEET 6			
SCALE	PHASE CONCEPT DESIGN	PROJECT / DRAWING No. 30032687-DWG-34100-U-4194	REVISION D





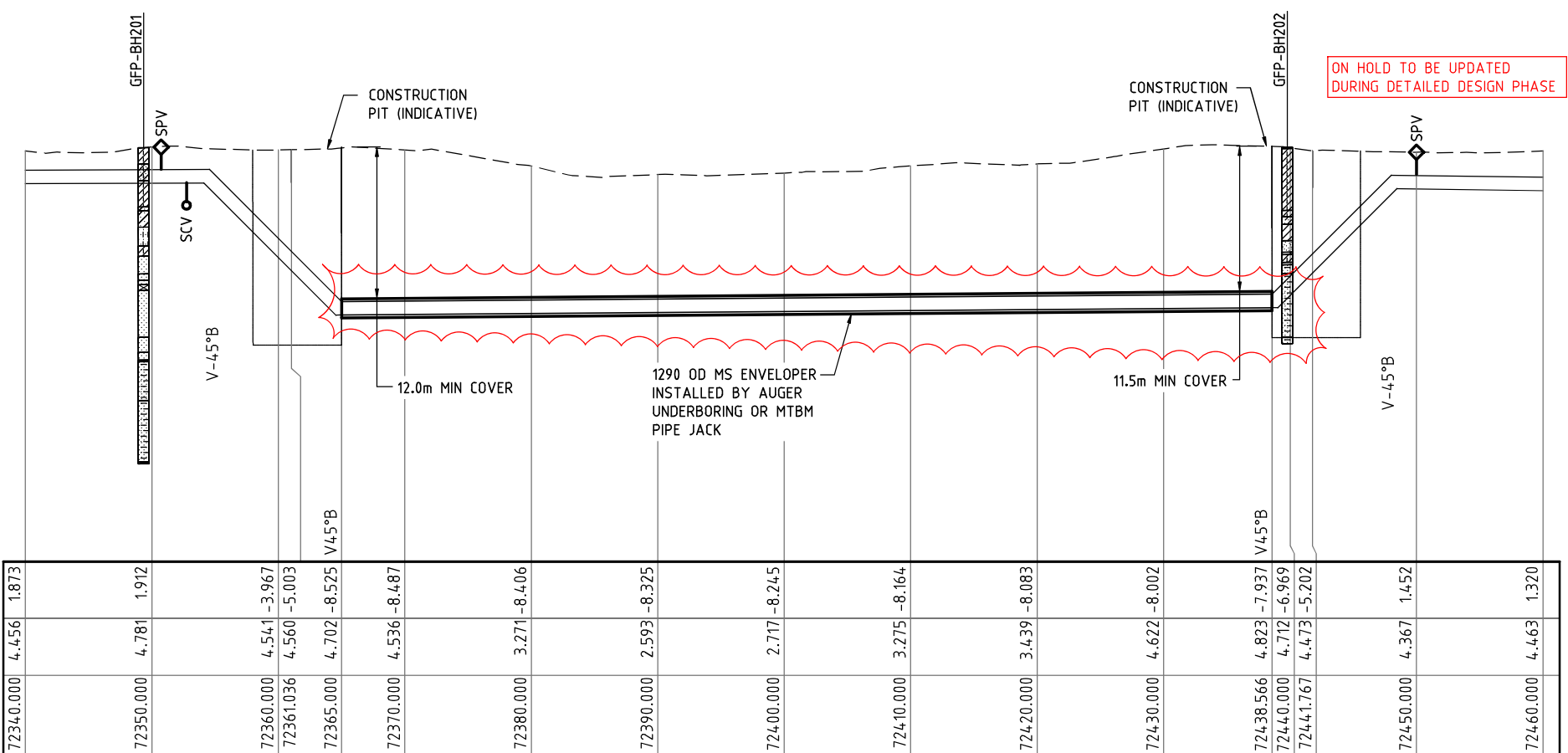
**LEGEND**

GFP-TP1	TEST PIT (2008)
GFP-BH1	BORE HOLE (2008)
TP200	TEST PIT (2007)



**LEGEND**

	Clayey Sand
	Silty Clay
	Clay
	Sandstone fine grained
	Siltstone
	Core Loss



150 mm ON ORIGINAL

**NOTE**  
1. FOR SMEC'S DISCLAIMER REFER DRAWING 30032687-DWG-32000-G-0112

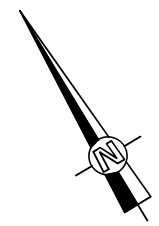
**NOT FOR CONSTRUCTION**

DRAWING FILE LOCATION / NAME V:\_Vault\Projects\3003\30032687-GFP-DE Project\110_CADD\CAD\DWG\0130 GL\34100 ALTON DOWNS TO RAGLAN PIPELINE\30032687-DWG-34100-U-4195.dwg		PLOT DATE 21 Nov 2022	TIME 15:21:52
EXTERNAL REFERENCE FILES X:\CONTOURS_CORRIDOR X:\30032687_SHEC_A1 X:\ASSEMBLED_PIPE_CONTROL X:\DC08 X:\30032687_GFP_Alignment_2022	REV	DATE	AMENDMENT / REVISION DESCRIPTION
	A	20.08.21	30% CONCEPT DESIGN
	B	14.01.22	CONCEPT DESIGN-ECI PHASE
	C	19.09.22	OPTIMISED CONCEPT DESIGN
	D	18.11.22	UPDATED RIGHT OF WAY
	WVR No.	APPROVAL	TITLE
	006	MSL	DRAFTER <i>SUCHITHR</i>
	006	MSL	DRAFTING CHECK <i>DILIP.MG</i>
	034	DT	DESIGNER <i>B.BEALING</i>
	037	MSL	DESIGN CHECK <i>M.SERRANO LOPEZ</i>
			PROJECT MANAGER <i>M.SERRANO LOPEZ</i>
			PROJECT DIRECTOR <i>D.TAYLOR</i>

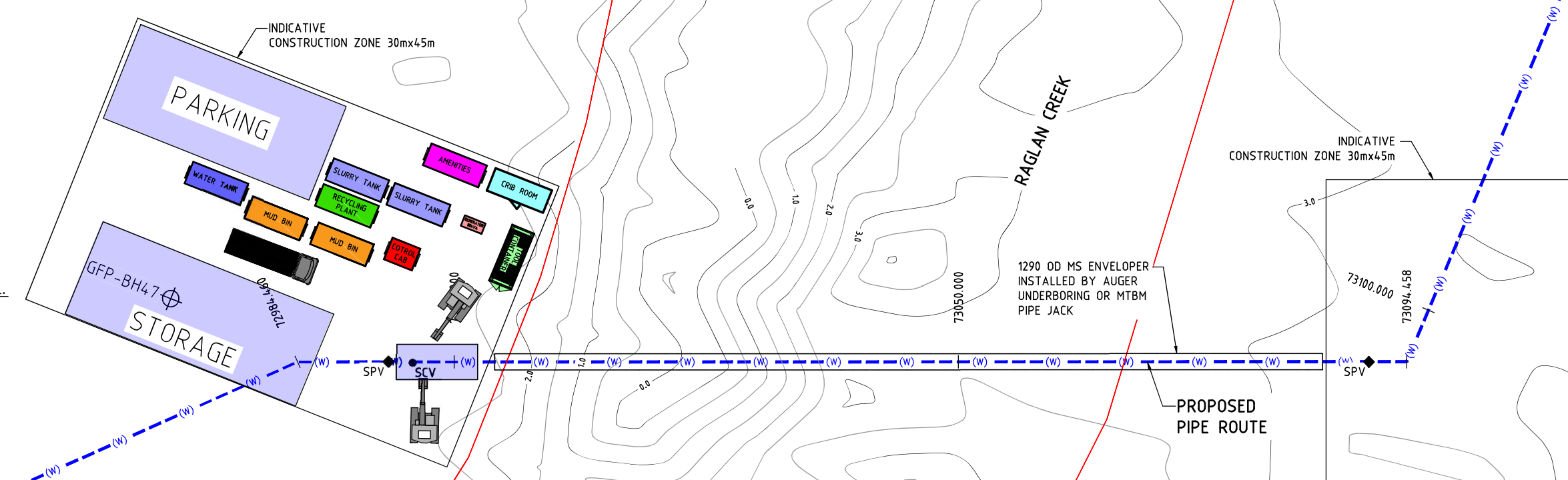
SCALES AT A1 SIZE DRAWING	DESIGNER	CLIENT
SCALE 1:250	 Member of the Surbana Jurong Group © ABN 47 065 475 149 LEVEL 6, 480 ST PAULS TERRACE FORTITUDE VALLEY QLD 4006 SMEC PROJECT No 30032687	

PROJECT TITLE	SCALE	PHASE	PROJECT / DRAWING No.	REVISION
FITZROY TO GLADSTONE PIPELINE PROJECT 30GLA - ALTON DOWNS TO RAGLAN PIPELINE PLAN AND LONGITUDINAL SECTION HORRIGGAN CREEK CROSSING SHEET 7	SCALE 1:250	CONCEPT DESIGN	30032687-DWG-34100-U-4195	D

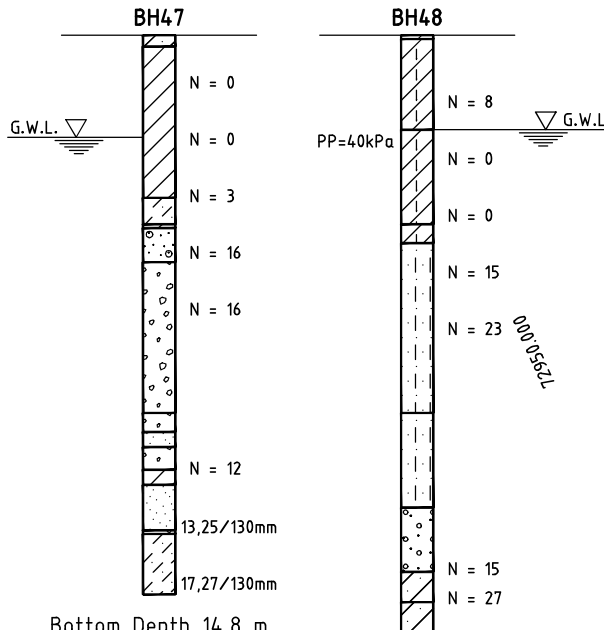




- LEGEND**
- GFP-TP1 TEST PIT (2008)
  - GFP-BH1 BORE HOLE (2008)
  - TP200 TEST PIT (2007)

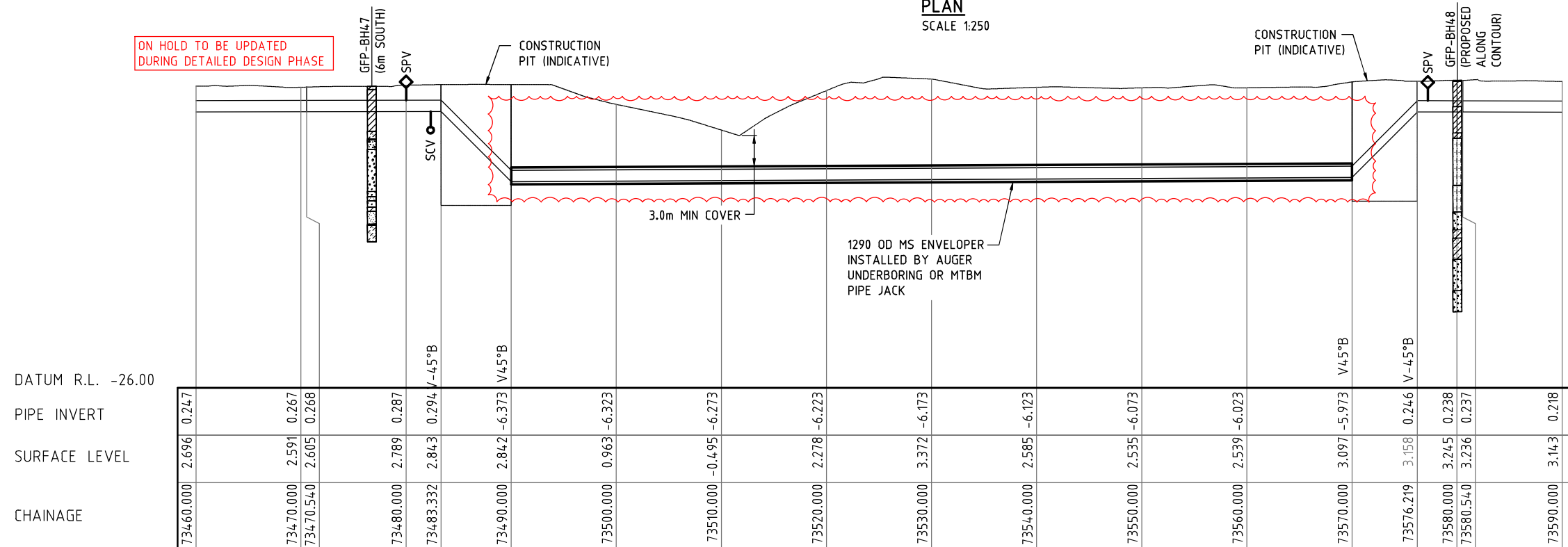


**PLAN**  
SCALE 1:250



- LEGEND**
- Silty Clay
  - Clay
  - Sand
  - Gravel
  - Clayey Sand
  - Gravel Sandy
  - Siltstone

**BOREHOLE DETAILS**  
SCALE 1:200



**LONGITUDINAL SECTION**  
SCALE 1:250

**NOTE**  
1. FOR SMEC'S DISCLAIMER REFER DRAWING 30032687-DWG-32000-G-0112

**NOT FOR CONSTRUCTION**

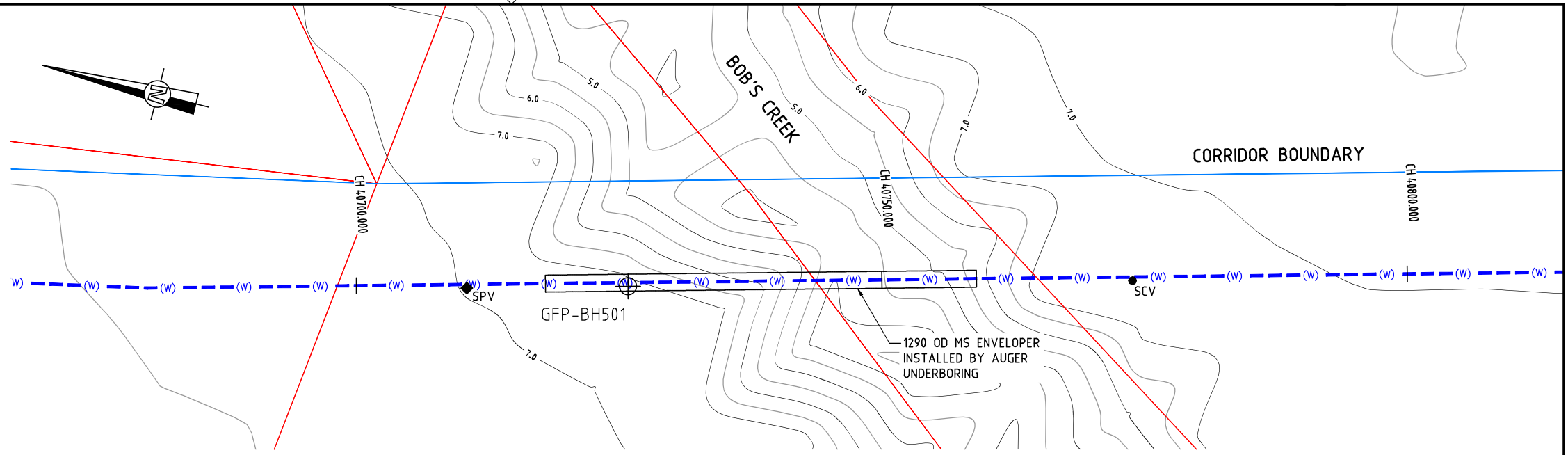
150 mm ON ORIGINAL

DRAWING FILE LOCATION / NAME V:\_Vault\Projects\3003\30032687-GFP-DE Project\110_CADD\CAD\DWG\0130 GL\34100 ALTON DOWNS TO RAGLAN PIPELINE\30032687-DWG-34100-U-4196.dwg		PLOT DATE 21 Nov 2022	TIME 15:22:24
EXTERNAL REFERENCE FILES X:\CONTOURS_CORRIDOR X:\3032654_SHEC_A1 X:\SCIB X:\3032687_GFP_Alignment_2022	REV	DATE	AMENDMENT / REVISION DESCRIPTION
	A	20.08.21	30% CONCEPT DESIGN
	B	14.01.22	CONCEPT DESIGN-ECI PHASE
	C	19.09.22	OPTIMISED CONCEPT DESIGN
	D	18.11.22	UPDATED RIGHT OF WAY
	WVR No.	APPROVAL	TITLE
	006	MSL	DRAFTER <i>SUCHITHR</i>
	006	MSL	DRAFTING CHECK <i>DILIP.MG</i>
	034	DT	DESIGNER <i>B.BEALING</i>
	037	MSL	DESIGN CHECK <i>M.SERRANO LOPEZ</i>
			PROJECT MANAGER <i>M.SERRANO LOPEZ</i>
			PROJECT DIRECTOR <i>D.TAYLOR</i>
SCALES AT A1 SIZE DRAWING		DESIGNER	
SCALE 1:250		<b>SMC</b> Member of the Surbana Jurong Group © ABN 47 065 475 149	
SCALE 1:200		CLIENT	
		<b>Gladstone Area Water Board</b>	
PROJECT TITLE		PROJECT / DRAWING No.	
FITZROY TO GLADSTONE PIPELINE PROJECT 30GLA - ALTON DOWNS TO RAGLAN PIPELINE PLAN AND LONGITUDINAL SECTION RAGLAN CREEK CROSSING SHEET 8		30032687-DWG-34100-U-4196	
SCALE	PHASE	REVISION	
	CONCEPT DESIGN	D	

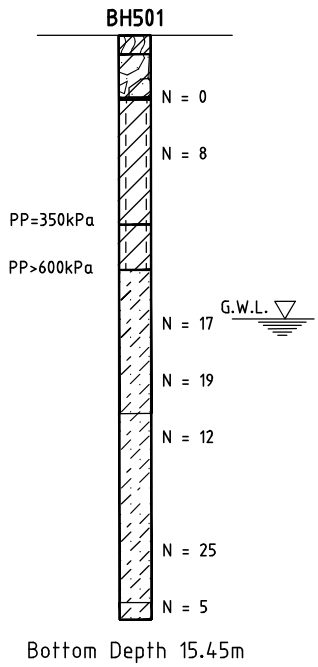








PLAN  
SCALE 1:250

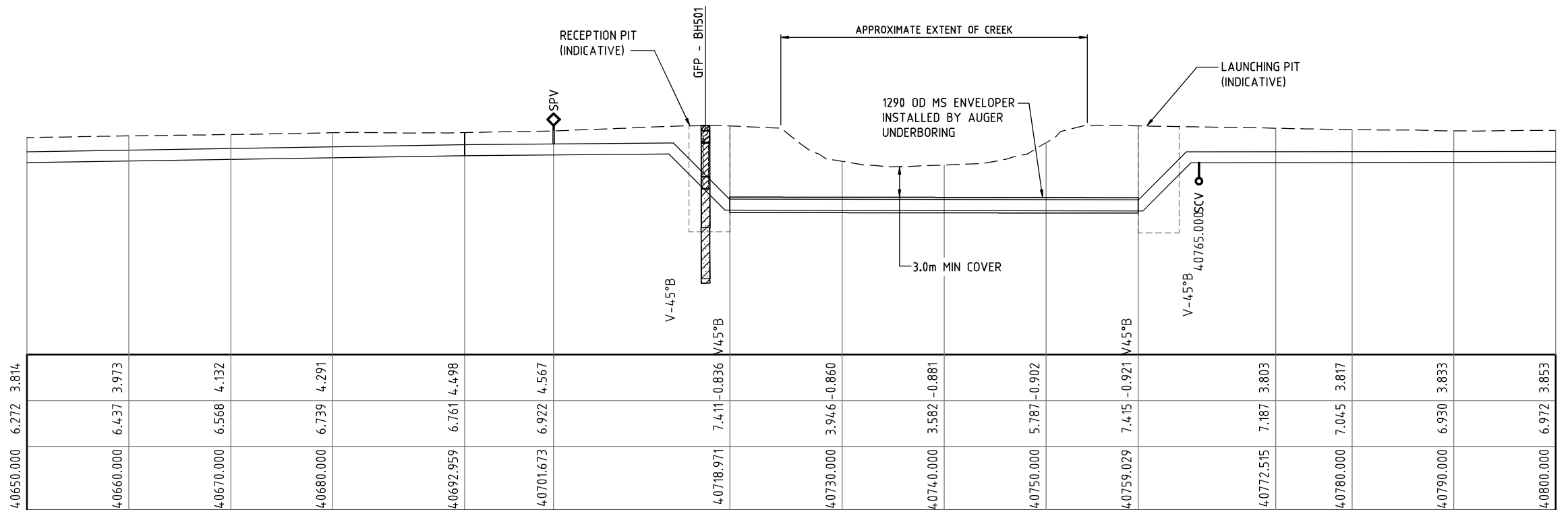


Bottom Depth 15.45m

BOREHOLE DETAILS  
SCALE 1:200

LEGEND

- Silty Clay
- Sandy Gravelly Clay
- Clayey Sand
- Clay



LONGITUDINAL SECTION  
SCALE 1:250

DATUM R.L. -15.00  
PIPE INVERT  
SURFACE LEVEL  
CHAINAGE

4.0650.000	6.272	3.814																		
4.0660.000	6.437	3.973																		
4.0670.000	6.568	4.132																		
4.0680.000	6.739	4.291																		
4.0692.959	6.761	4.498																		
4.0701.673	6.922	4.567																		
4.0718.971	7.411	-0.836																		
4.0730.000	3.946	-0.860																		
4.0740.000	3.582	-0.881																		
4.0750.000	5.787	-0.902																		
4.0759.029	7.415	-0.921																		
4.0772.515	7.187	3.803																		
4.0780.000	7.045	3.817																		
4.0790.000	6.930	3.833																		
4.0800.000	6.972	3.853																		

LEGEND

- TEST PIT (2008)
- BORE HOLE (2008)
- TEST PIT (2007)

NOTE  
1. FOR SMEC'S DISCLAIMER REFER DRAWING 30032687-DWG-32000-G-0112

**NOT FOR CONSTRUCTION**

150 mm ON ORIGINAL

DRAWING FILE LOCATION / NAME V:\_Vault\Projects\3003\30032687\GFP-DE Project\110_CADD\CAD\DWG\0130 GL\34100 ALTON DOWNS TO RAGLAN PIPELINE\30032687-DWG-34100-U-4198.dwg		PLOT DATE 21 Nov 2022	TIME 15:23:39
EXTERNAL REFERENCE FILES X_ASSUMED_DCB X_CONTOURS_CORRIDOR X_SERVICES_SBYD_CORRIDOR X_30032687_SHEC_A1 X_ASSUMED_PIPE_CONTROL	REV A B C D	DATE 20.08.21 14.01.22 30.06.22 18.11.22	AMENDMENT / REVISION DESCRIPTION 30% CONCEPT DESIGN CONCEPT DESIGN-ECI PHASE OPTIMISED CONCEPT DESIGN UPDATED RIGHT OF WAY
	WVR No. 006 032 037	APPROVAL MSL DT MSL	TITLE DRAFTER DRAFTING CHECK DESIGNER DESIGN CHECK PROJECT MANAGER PROJECT DIRECTOR
			NAME SUCHITHR DILIP.MG B.BEALING M.SERRANO LOPEZ M.SERRANO LOPEZ D.TAYLOR
SCALES AT A1 SIZE DRAWING SCALE 1:250 SCALE 1:200		DESIGNER SMC Member of the Surbana Jurong Group © ABN 47 065 475 149 LEVEL 6, 480 ST PAULS TERRACE FORTITUDE VALLEY QLD 4006 SMC PROJECT No 30032687	CLIENT Gladstone Area Water Board
PROJECT TITLE FITZROY TO GLADSTONE PIPELINE PROJECT 30GLA - ALTON DOWNS TO RAGLAN PIPELINE PLAN AND LONGITUDINAL SECTION BOB'S CREEK CROSSING SHEET 10		SCALE CONCEPT DESIGN	PROJECT / DRAWING No. 30032687-DWG-34100-U-4198
		REVISION D	







# FITZROY TO GLADSTONE PIPELINE PROJECT

## RAGLAN TO ALDOGA PIPELINE : 34200 COVER SHEET

### GENERAL

#### DRAWING No.

30032656-DWG-34200-G-6000

#### TITLE

COVER SHEET

### CIVIL WORKS

#### DRAWING No.

30032656-DWG-34200-C-6003  
30032656-DWG-34200-C-6014  
30032656-DWG-34200-C-6015  
30032656-DWG-34200-C-6016  
30032656-DWG-34200-C-6017  
30032656-DWG-34200-C-6018  
30032656-DWG-34200-C-6019  
30032656-DWG-34200-C-6020  
30032656-DWG-34200-C-6021  
30032656-DWG-34200-C-6022  
30032656-DWG-34200-C-6034

#### TITLE

KEY PLAN  
LAYOUT PLAN - SHEET 1  
LAYOUT PLAN - SHEET 2  
LAYOUT PLAN - SHEET 3  
LAYOUT PLAN - SHEET 4  
LAYOUT PLAN - SHEET 5  
LAYOUT PLAN - SHEET 6  
LAYOUT PLAN - SHEET 7  
LAYOUT PLAN - SHEET 8  
LAYOUT PLAN - SHEET 9  
PLAN AND LONG SECTION - GENERAL NOTES & LEGEND

### GEOTECHNICAL

#### DRAWING No.

30032656-DWG-34200-U-6150  
30032656-DWG-34200-U-6151  
30032656-DWG-34200-U-6152  
30032656-DWG-34200-U-6153

#### TITLE

MT LARCOM ROAD / ALDOGA RAIL CROSSING - PLAN AND LONG SECTION  
EAST END MINE RAIL LINK CROSSING - PLAN AND LONG SECTION  
DART'S CREEK ROAD CROSSING - PLAN AND LONG SECTION - ALTERNATIVE ROUTE  
LARCOM CREEK CROSSING - PLAN AND LONG SECTION - ALTERNATIVE ROUTE

### NOTE



- FOR SMEC'S DISCLAIMER REFER DRAWING 30032687-DWG-32000-G-0112

**NOT FOR CONSTRUCTION**

150 mm ON ORIGINAL  
A1

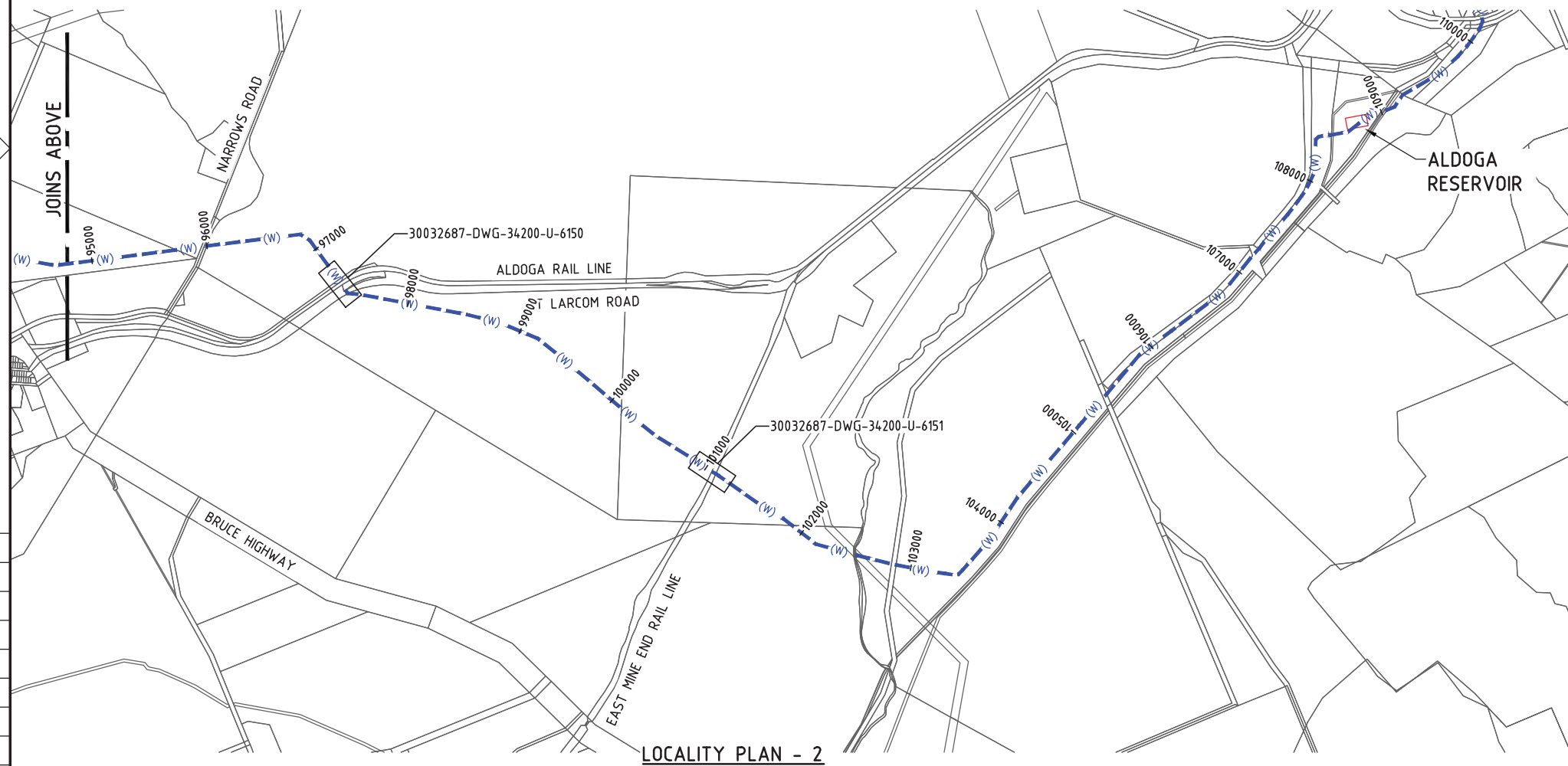
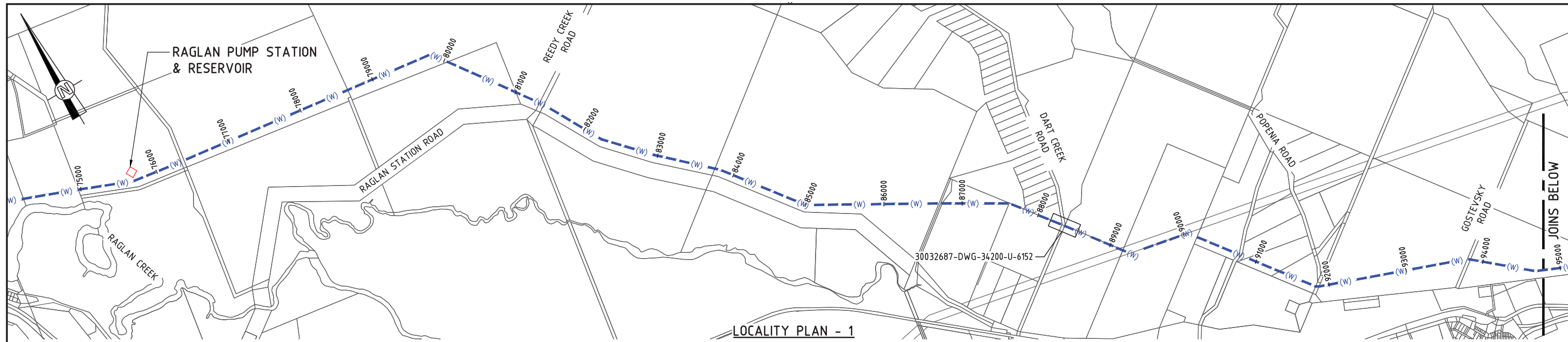
DRAWING FILE LOCATION / NAME V:\_Vault\Projects\3003\30032687\GFP-DE Project\110_CADD\CAD\DWG\01 30 GL\34200 RAGLAN PUMP STATION TO ALDOGA PIPELINE\30032687-DWG-34200-G-6000.dwg		PLOT DATE 01 May 2022	TIME 20:54:20
--	--	--------------------------	------------------

EXTERNAL REFERENCE FILES	REV	DATE	AMENDMENT / REVISION DESCRIPTION	MVR No.	APPROVAL	TITLE	NAME
X_30032656_SMEC_A1	A	20.08.21	30% CONCEPT DESIGN	006	MSL	DRAFTER	SUCHITH.R
	B	14.01.22	CONCEPT DESIGN-ECI PHASE	006	MSL	DRAFTING CHECK	C.BOU
	C	30.06.22	OPTIMISED CONCEPT DESIGN	006	MSL	DESIGNER	M.SERRANO LOPEZ
	D	18.11.22	UPDATED RIGHT OF WAY	037	MSL	DESIGN CHECK	J.WAGENAAR
						PROJECT MANAGER	M.SERRANO LOPEZ
						PROJECT DIRECTOR	D.TAYLOR

SCALES AT A1 SIZE DRAWING	DESIGNER	CLIENT
	 Member of the Surbana Jurong Group © ABN 47 065 475 149 LEVEL 6, 480 ST PAULS TERRACE FORTITUDE VALLEY QLD 4006 SMEC PROJECT No 30032687	

PROJECT TITLE FITZROY TO GLADSTONE PIPELINE PROJECT 30GLA - RAGLAN PUMP STATION TO ALDOGA PIPELINE GENERAL COVER SHEET	SCALE	PHASE CONCEPT DESIGN	PROJECT / DRAWING No. 30032687-DWG-34200-G-6000	REVISION D
---	-------	-------------------------	--	---------------





**NOTE**  
 1. FOR SMEC'S DISCLAIMER REFER DRAWING 30032687-DWG-32000-G-0112

**NOT FOR CONSTRUCTION**

DRAWING FILE LOCATION / NAME V:\_Vault\Projects\3003\30032687\GFP-DE Project\110_CADD\CAD\DWG\01 30 GL\34200 RAGLAN PUMP STATION TO ALDOGA PIPELINE\30032687-DWG-34200-C-6003.dwg		PLOT DATE 21 May 2022		TIME 19:09:07	
EXTERNAL REFERENCE FILES X_30032687_SMEC_A1	REV	DATE	AMENDMENT / REVISION DESCRIPTION	MWR No.	APPROVAL
	A	20.08.21	30% CONCEPT DESIGN	006	MSL
	B	14.01.22	CONCEPT DESIGN-ECI PHASE	006	MSL
	C	30.06.22	OPTIMISED CONCEPT DESIGN	006	MSL
	D	18.11.22	UPDATED RIGHT OF WAY	037	MSL

DESIGNER	NAME
DRAFTER	SUCHITH.R
DRAFTING CHECK	C.BOU
DESIGNER	M.SERRANO LOPEZ
DESIGN CHECK	J.WAGENAAR
PROJECT MANAGER	M.SERRANO LOPEZ
PROJECT DIRECTOR	D.TAYLOR

SCALES AT A1 SIZE DRAWING

SCALE 0 500 1000 1250m  
 1 : 50000 (A3) : 25000 (A1)

DESIGNER



Member of the Surland Jurong Group  
 © ABN 47 065 475 149  
 LEVEL 6, 480 ST PAULS TERRACE  
 FORTITUDE VALLEY QLD 4006  
 SMEC PROJECT No 30032687

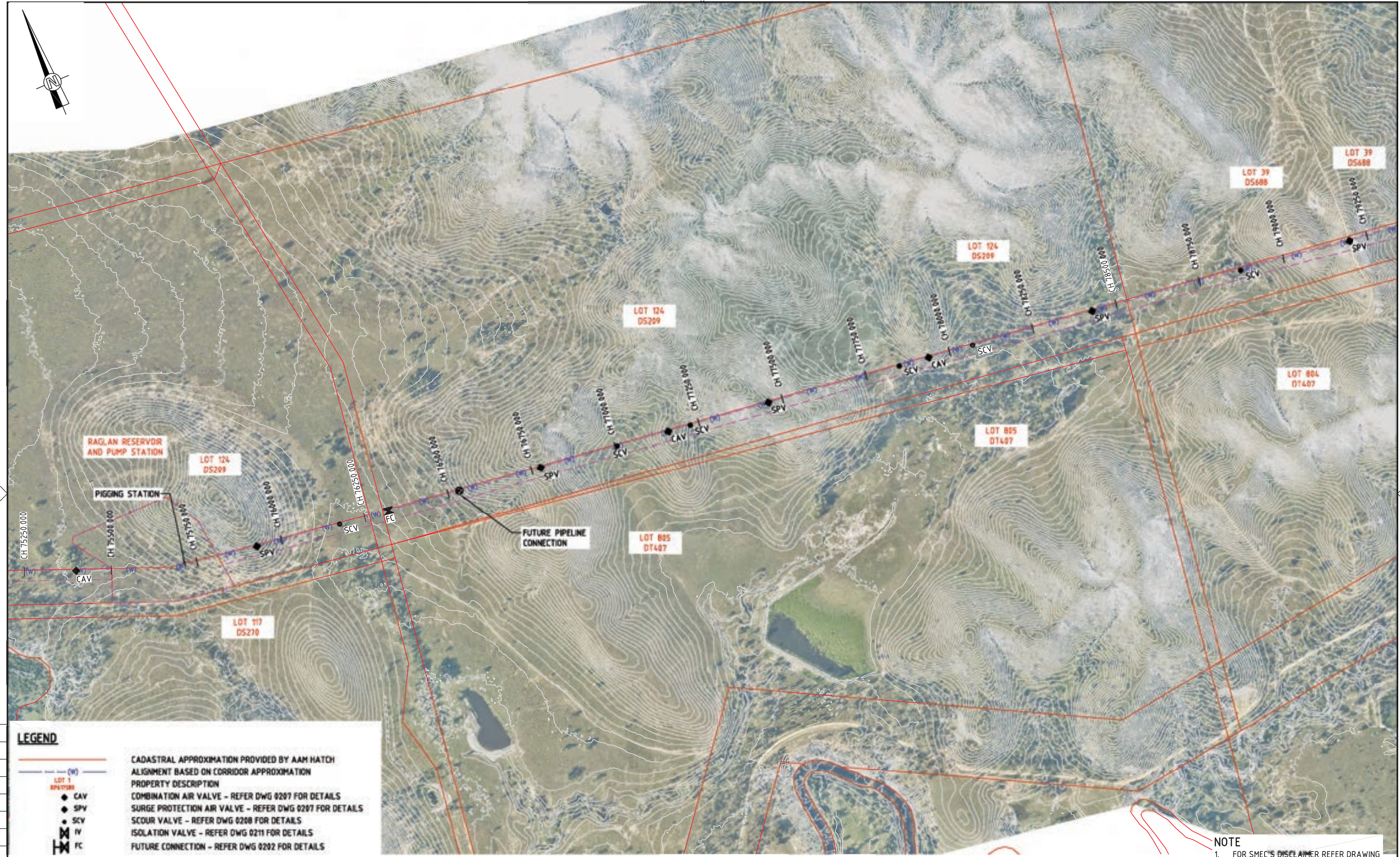
CLIENT



PROJECT TITLE FITZROY TO GLADSTONE PIPELINE PROJECT 30GLA - RAGLAN PUMP STATION TO ALDOGA PIPELINE KEY PLAN			
SCALE	PHASE CONCEPT DESIGN	PROJECT / DRAWING No. 30032687-DWG-34200-C-6003	REVISION D

150 mm ON ORIGINAL  
A1





**LEGEND**

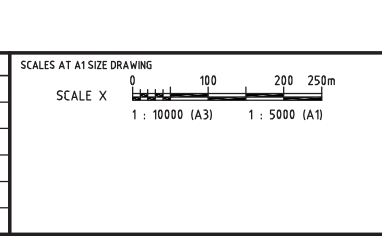
- CADASTRAL APPROXIMATION PROVIDED BY AAM HATCH
- ALIGNMENT BASED ON CORRIDOR APPROXIMATION
- PROPERTY DESCRIPTION
- COMBINATION AIR VALVE - REFER DWG 0207 FOR DETAILS
- SURGE PROTECTION AIR VALVE - REFER DWG 0207 FOR DETAILS
- SCOUR VALVE - REFER DWG 0208 FOR DETAILS
- ISOLATION VALVE - REFER DWG 0211 FOR DETAILS
- FUTURE CONNECTION - REFER DWG 0202 FOR DETAILS
- RIGHT OF WAY

**NOTE**  
 1. FOR SMEC'S DISCLAIMER REFER DRAWING 30032687-DWG-32000-G-0112

**NOT FOR CONSTRUCTION**

DRAWING FILE LOCATION / NAME V:\_Vault\Projects\3003\30032687\GFP-0E Project\110_CADD\CAD\DWG\01 30 GL\34200 RAGLAN PUMP STATION TO ALDOGA PIPELINE\30032687-DWG-34200-C-6014.dwg		PLOT DATE 13 May 2022		TIME 19:16:43	
EXTERNAL REFERENCE FILES	REV	DATE	AMENDMENT / REVISION DESCRIPTION	MWR No.	APPROVAL
X:\30032687_SMEC_A1	A	20.08.21	30% CONCEPT DESIGN	006	MSL
X:\VALUES	B	14.01.22	CONCEPT DESIGN-ECI PHASE	006	MSL
X:\CONTOUR Int INTERVAL	C	30.06.22	OPTIMISED CONCEPT DESIGN	006	MSL
X:\5000_DWG_LEGEND	D	18.11.22	UPDATED RIGHT OF WAY	037	MSL
X:\0200					
SS_30032687_GFP_Aerial Image					
X:\30032687_GFP_Aerial Image_3					
X:\30032687_GFP_Aerial Image_4					
X:\30032687_GFP_ROW					
X:\30032687_GFP_Alignment_2022					

DESIGNER	SUCHITH.R
DRAFTING CHECK	C.BOU
DESIGNER	M.SERRANO LOPEZ
DESIGN CHECK	J.WAGENAAR
PROJECT MANAGER	M.SERRANO LOPEZ
PROJECT DIRECTOR	D.TAYLOR



**DESIGNER**

Member of the Suez Canal Group  
 © ABN 47 065 475 149  
 LEVEL 6, 480 ST PAULS TERRACE  
 FORTITUDE VALLEY QLD 4006  
 SMEC PROJECT No 30032687

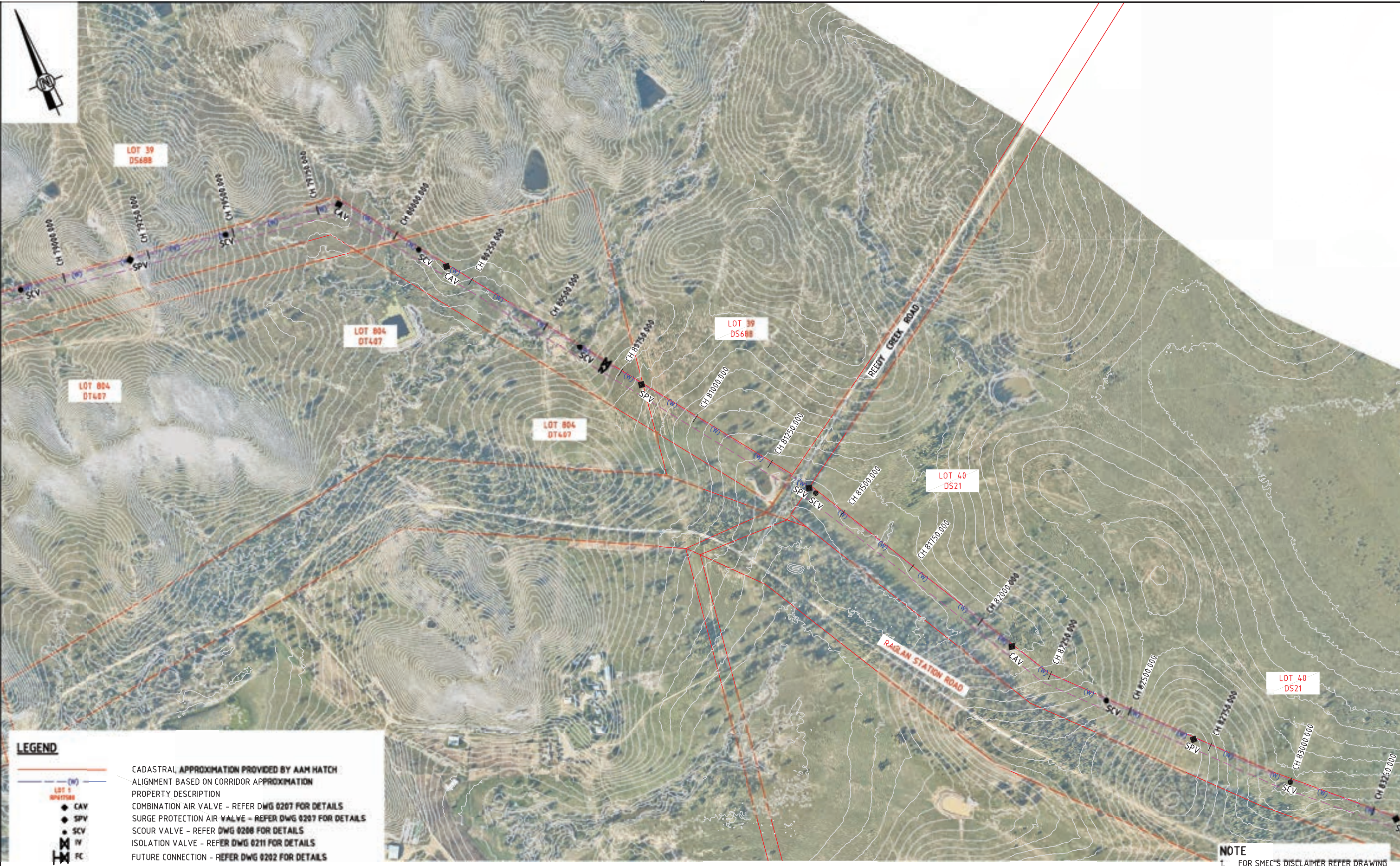
**CLIENT**

Gladstone Area Water Board

PROJECT TITLE FITZROY TO GLADSTONE PIPELINE PROJECT 30GLA - RAGLAN PUMP STATION TO ALDOGA PIPELINE			
LAYOUT PLAN CH76000 TO CH79500 SHEET 1			
SCALE 1:5000	PHASE CONCEPT DESIGN	PROJECT / DRAWING No. 30032687-DWG-34200-C-6014	REVISION D

150 mm ON ORIGINAL  
 A1





**LEGEND**

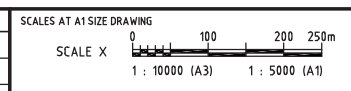
- CADASTRAL APPROXIMATION PROVIDED BY AAM HATCH
- ALIGNMENT BASED ON CORRIDOR APPROXIMATION
- PROPERTY DESCRIPTION
- CAV COMBINATION AIR VALVE - REFER DWG 0207 FOR DETAILS
- SPV SURGE PROTECTION AIR VALVE - REFER DWG 0207 FOR DETAILS
- SCV SCOUR VALVE - REFER DWG 0208 FOR DETAILS
- IV ISOLATION VALVE - REFER DWG 0211 FOR DETAILS
- FC FUTURE CONNECTION - REFER DWG 0202 FOR DETAILS
- RIGHT OF WAY

**NOTE**  
 1. FOR SMEC'S DISCLAIMER REFER DRAWING 30032687-DWG-32000-G-0112

150 mm ON ORIGINAL

DRAWING FILE LOCATION / NAME V:\_Vault\Projects\3003\30032687\GFP--OE Project\110_CADD\CAD\DWG\01 30 GL\34200 RAGLAN PUMP STATION TO ALDOGA PIPELINE\30032687-DWG-34200-C-6015.dwg		PLOT DATE 19 May 2022		TIME 19:27:57	
EXTERNAL REFERENCE FILES	REV	DATE	AMENDMENT / REVISION DESCRIPTION	MVR No.	APPROVAL
X_5000_DWG_LEGEND	A	20.08.21	30% CONCEPT DESIGN	006	MSL
X_30032687_SHEC_A1	B	14.01.22	CONCEPT DESIGN-ECI PHASE	006	MSL
X_VALVES	C	30.06.22	OPTIMISED CONCEPT DESIGN	037	MSL
X_CONTOUR 1m INTERVAL	D	18.11.22	UPDATED RIGHT OF WAY		
X_DIC08					
SS_30032687_GFP_Aerial Image					
X_30032687_GFP_Aerial Image_4					
X_30032687_GFP_RIW					
X_30032687_GFP_Alignment_2822					

DESIGNER	SUCHITH.R
DRAFTING CHECK	C.BOU
DESIGNER	M.SERRANO LOPEZ
DESIGN CHECK	J.WAGENAAR
PROJECT MANAGER	M.SERRANO LOPEZ
PROJECT DIRECTOR	D.TAYLOR



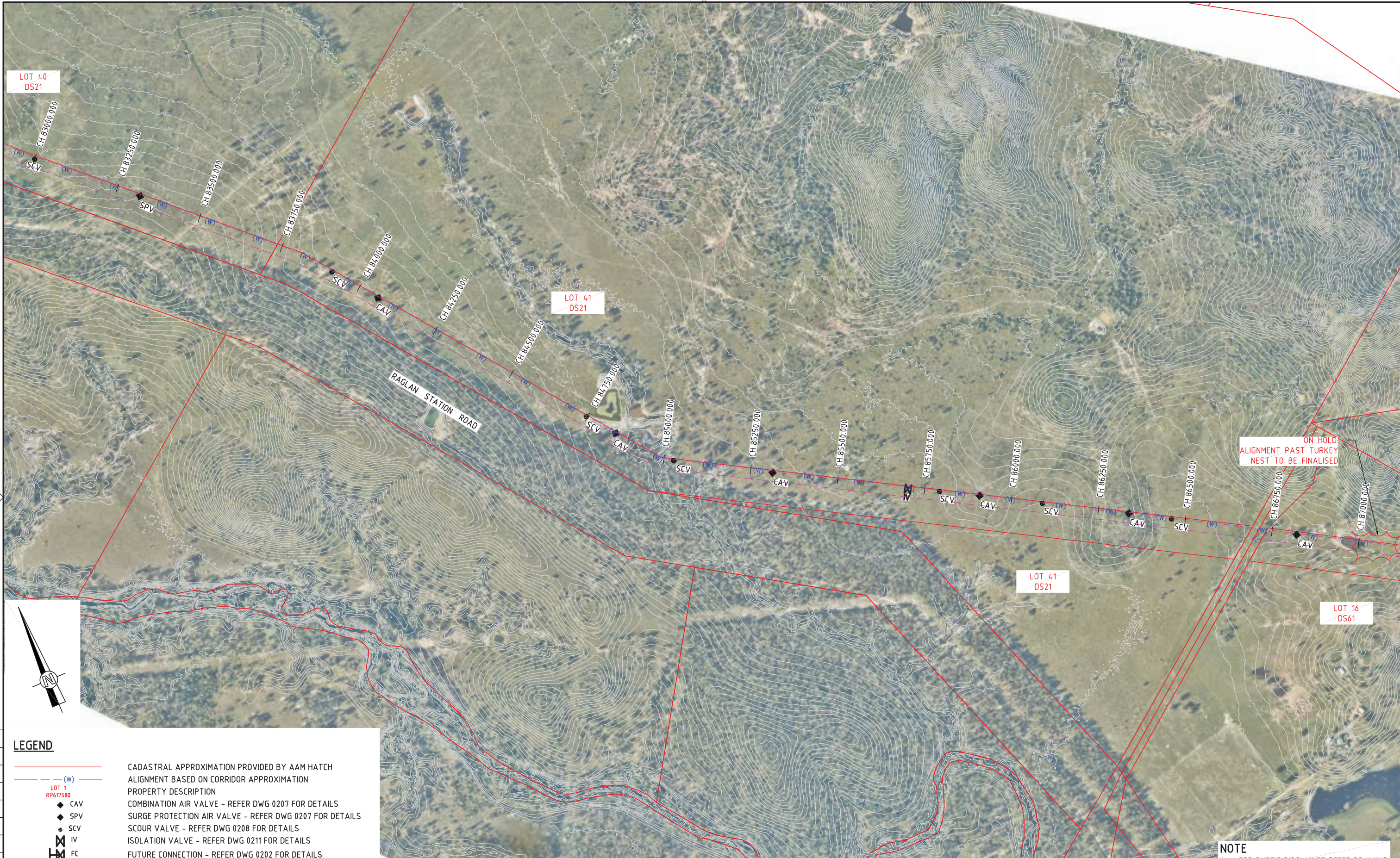
**NOT FOR CONSTRUCTION**

**SMEC**  
 Member of the Sellen Group  
 ABN 47 065 475 149  
 LEVEL 6, 480 ST PAULS TERRACE  
 FORTITUDE VALLEY QLD 4006  
 SMEC PROJECT No 30032687

**Gladstone Area Water Board**

PROJECT TITLE FITZROY TO GLADSTONE PIPELINE PROJECT 30GLA - RAGLAN PUMP STATION TO ALDOGA PIPELINE			
LAYOUT PLAN CH79500 TO CH83500 SHEET 2			
SCALE 1:5000	PHASE CONCEPT DESIGN	PROJECT / DRAWING No. 30032687-DWG-34200-C-6015	REVISION D





LOT 40  
DS21

LOT 41  
DS21

LOT 41  
DS21

LOT 16  
DS61

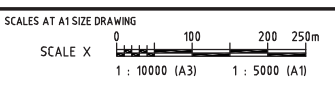
ON HOLD  
ALIGNMENT PAST TURKEY  
NEST TO BE FINALISED

LEGEND	
	CADASTRAL APPROXIMATION PROVIDED BY AAM HATCH
	ALIGNMENT BASED ON CORRIDOR APPROXIMATION
	PROPERTY DESCRIPTION
	COMBINATION AIR VALVE - REFER DWG 0207 FOR DETAILS
	SCOUR VALVE - REFER DWG 0208 FOR DETAILS
	ISOLATION VALVE - REFER DWG 0211 FOR DETAILS
	FUTURE CONNECTION - REFER DWG 0202 FOR DETAILS
	RIGHT OF WAY

NOTE  
1. FOR SMEC'S DISCLAIMER REFER DRAWING  
30032687-DWG-32000-G-0112

150 mm ON ORIGINAL  
150  
140  
130  
120  
110  
100  
90  
80  
70  
60  
50  
40  
30  
20  
10  
0

DRAWING FILE LOCATION / NAME		PLOT DATE		TIME	
V:\_Vault\Projects\3003\30032687\GFP-DE Project\110_CADD\CAD\DWG\01 30 GL\34200 RAGLAN PUMP STATION TO ALDOGA PIPELINE\30032687-DWG-34200-C-6011.dwg		11 May 2022		19:35:50	
EXTERNAL REFERENCE FILES	REV	DATE	AMENDMENT / REVISION DESCRIPTION	MVR No.	APPROVAL
X:\30032687_SMEC_A1	A	20.08.21	30% CONCEPT DESIGN	006	MSL
X:\DCDB	B	14.01.22	CONCEPT DESIGN-ECI PHASE	006	MSL
X:\CONTOUR 1st INTERVAL	C	30.06.22	OPTIMISED CONCEPT DESIGN	006	MSL
X:\3000_DWG_LEGEND	D	18.11.22	UPDATED RIGHT OF WAY	037	MSL
X:\30032687_GFP_Aerial Image					
X:\30032687_GFP_50m					
X:\30032687_GFP_Alignment_2022					
DESIGNER	NAME	DESIGN CHECK	PROJECT MANAGER	PROJECT DIRECTOR	
	SUCHITH.R	C.BO	M.SERRANO LOPEZ	D.TAYLOR	



**NOT FOR CONSTRUCTION**

DESIGNER

Member of the Sellen Group  
© ABN 47 065 475 149  
LEVEL 6, 480 ST PAULS TERRACE  
FORTITUDE VALLEY QLD 4006  
SMEC PROJECT No 30032687

CLIENT

PROJECT TITLE			
FITZROY TO GLADSTONE PIPELINE PROJECT			
30GLA - RAGLAN PUMP STATION TO ALDOGA PIPELINE			
LAYOUT PLAN			
CH83500 TO CH87500			
SHEET 3			
SCALE	PHASE	PROJECT / DRAWING No.	REVISION
1:5000	CONCEPT DESIGN	30032687-DWG-34200-C-6016	D





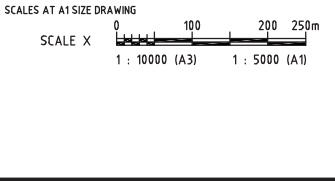
150 mm ON ORIGINAL  
A1

LEGEND		PROPERTY DESCRIPTION
	(W)	ALIGNMENT BASED ON CORRIDOR APPROXIMATION
	LOT 1 RP617580	PROPERTY DESCRIPTION
	CAV	COMBINATION AIR VALVE - REFER DWG 0207 FOR DETAILS
	SPV	SURGE PROTECTION AIR VALVE - REFER DWG 0207 FOR DETAILS
	SCV	SCOUR VALVE - REFER DWG 0208 FOR DETAILS
	IV	ISOLATION VALVE - REFER DWG 0211 FOR DETAILS
	FC	FUTURE CONNECTION - REFER DWG 0202 FOR DETAILS
		RIGHT OF WAY

**NOTE**  
1. FOR SMEC'S DISCLAIMER REFER DRAWING 30032687-DWG-32000-G-0112

**NOT FOR CONSTRUCTION**

DRAWING FILE LOCATION / NAME		PLOT DATE		TIME			
V:\_Vault\Projects\3003\30032687\GFP--OE Project\110_CADD\CAD\DWG\01 30 GL\34200 RAGLAN PUMP STATION TO ALDOGA PIPELINE\30032687-DWG-34200-C-6017.dwg		22 May 2022		19:44:31			
EXTERNAL REFERENCE FILES	REV	DATE	AMENDMENT / REVISION DESCRIPTION	MWR No.	APPROVAL	TITLE	NAME
X_5000_DWG_LEGEND	A	20.08.21	30% CONCEPT DESIGN	006	MSL	DRAFTER	SUCHITH.R
X_30032687_SHEC_A1	B	14.01.22	CONCEPT DESIGN-ECI PHASE	006	MSL	DRAFTING CHECK	C.BOU
X_VALVES	C	30.06.22	OPTIMISED CONCEPT DESIGN	006	MSL	DESIGNER	M.SERRANO LOPEZ
X_CONTOUR 1m INTERVAL	D	18.11.22	UPDATED RIGHT OF WAY	037	MSL	DESIGN CHECK	J.WAGENAAR
X_DWG						PROJECT MANAGER	M.SERRANO LOPEZ
SS_30032687_GFP_Aerial Image						PROJECT DIRECTOR	D.TAYLOR
SS_30032687_GFP_Aerial Image 4							
X_30032687_GFP_Alignment_2522							
X_30032687_GFP_ROW							



DESIGNER

Member of the Sellen Group  
© ABN 47 065 475 149  
LEVEL 6, 480 ST PAULS TERRACE  
FORTITUDE VALLEY QLD 4006  
SMEC PROJECT No 30032687

CLIENT

PROJECT TITLE			
FITZROY TO GLADSTONE PIPELINE PROJECT			
30GLA - RAGLAN PUMP STATION TO ALDOGA PIPELINE			
LAYOUT PLAN			
CH8750 TO CH9150			
SHEET 4			
SCALE	PHASE	PROJECT / DRAWING No.	REVISION
1:5000	CONCEPT DESIGN	30032687-DWG-34200-C-6017	D