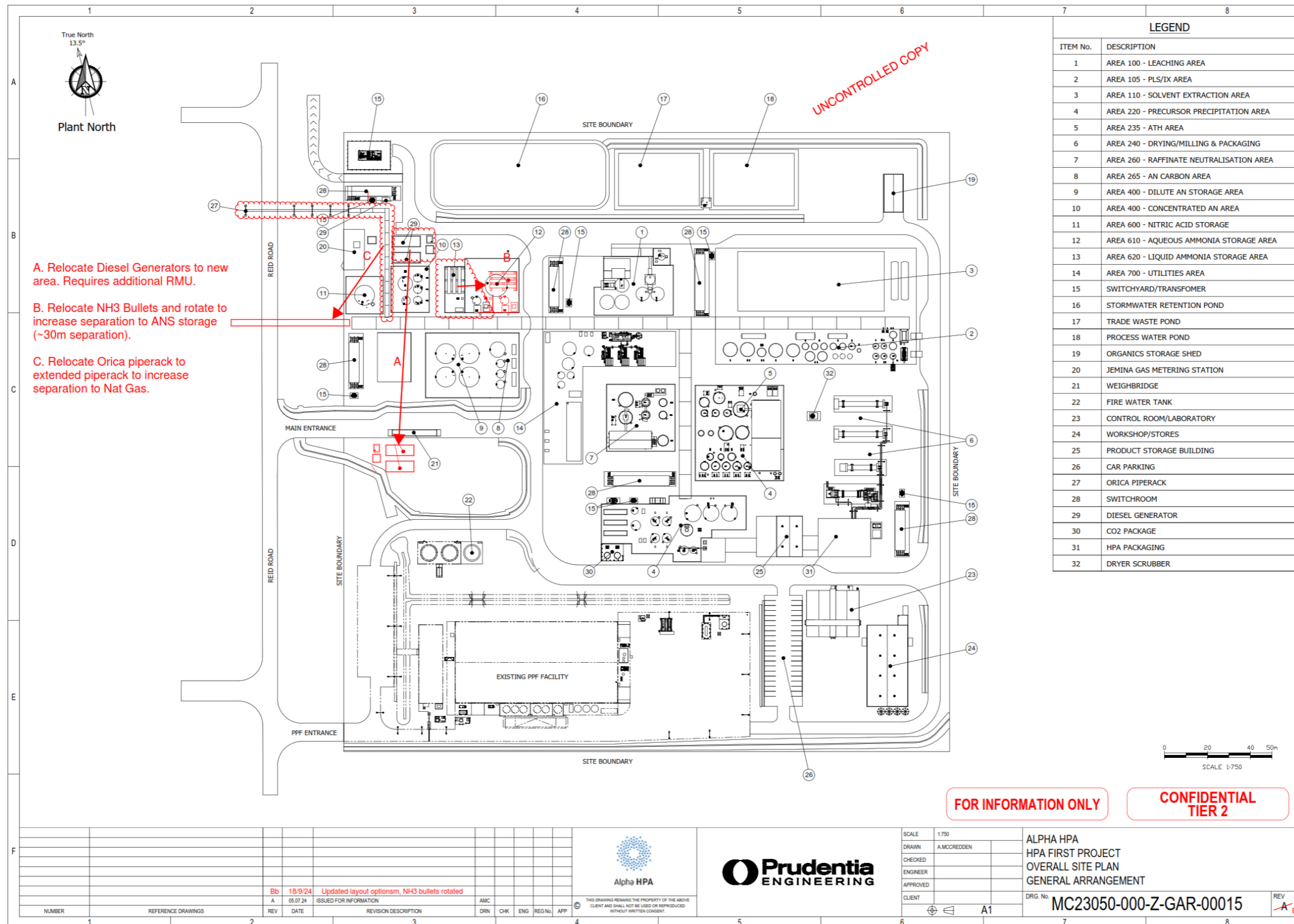
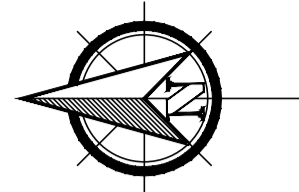



Figure 2.2: Layout



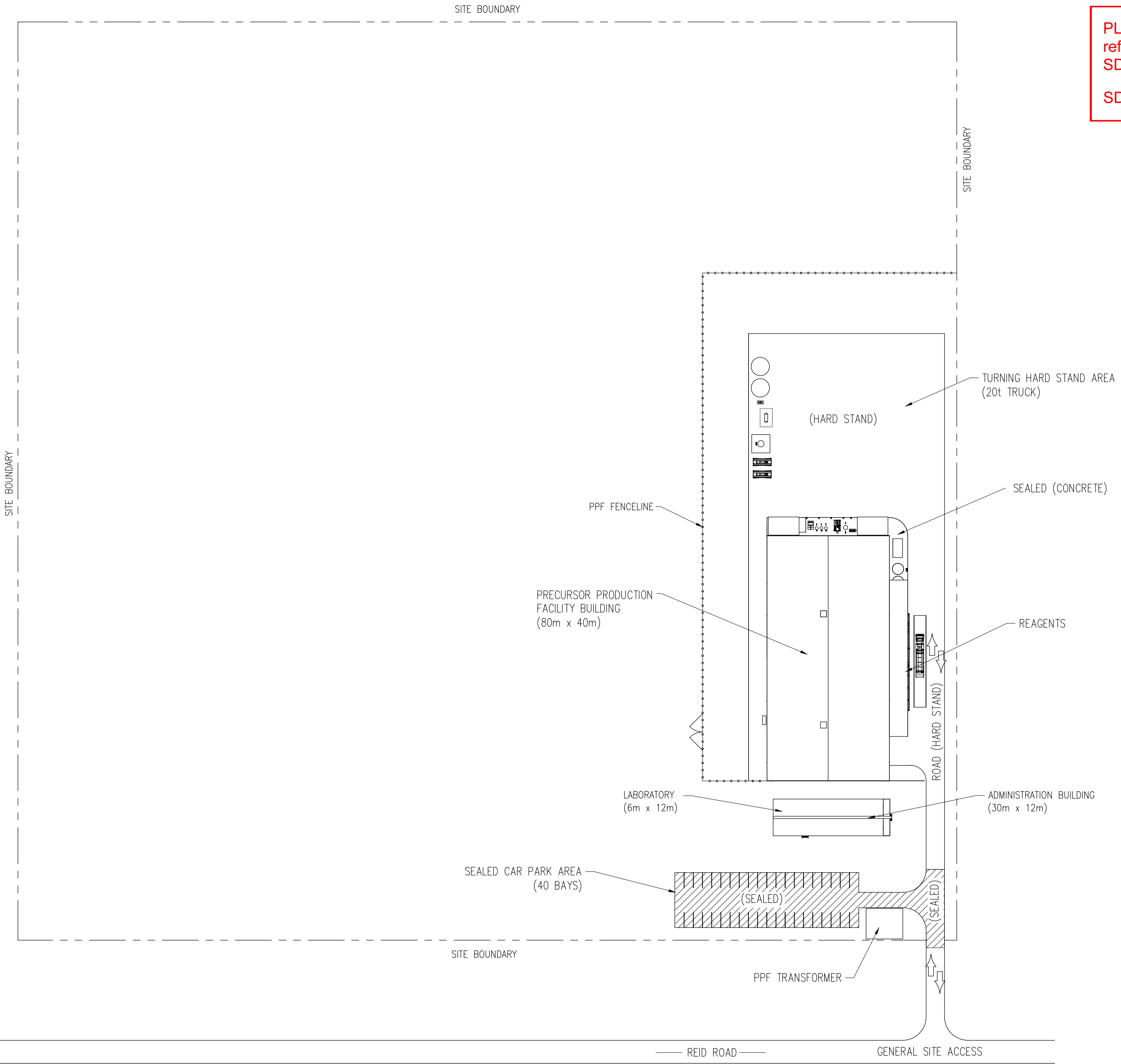


Plant North

PLANS AND DOCUMENTS referred to in the SDA APPROVAL



SDA approval: APC2021/012



CONFIDENTIAL

ISSUED FOR DFS

DOC No.	DESCRIPTION	REV No	DESCRIPTION	DRN	CHK'D	ENG	APPR'D	DATE
MC1868-G-002	SITE PLAN - GENERAL ARRANGEMENT	A	ISSUED FOR INFORMATION	AMC	JH	JH		15.05.21
		B	RE-ISSUED FOR INFORMATION	AMC	JH	JH		27.06.21
		C	RE-ISSUED FOR INFORMATION	CAM	JH	JH		16.07.21
		D	RE-ISSUED FOR INFORMATION	CAM	JH	JH		27.07.21
		E	UPDATED OCT 2021	AMC	JH	JH		19.10.21

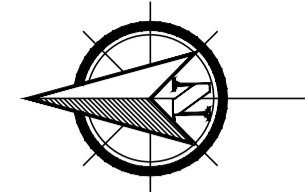


SCALE:	1:750
DRAWN:	AMC MAY 21
CHECKED:	
ENGINEER:	
APPROVED:	
CLIENT:	

ALPHA HPA
HPA FIRST PROJECT
SITE GENERAL ARRANGEMENT
STAGE 1 - PRECURSOR PRODUCTION PLANT

DRG. No. MC1868-G-030 Rev E

THIS DRAWING REMAINS THE PROPERTY OF ABOVE CLIENT AND SHALL NOT BE USED OR REPRODUCED OR ANY OF ITS CONTENTS IN WHOLE OR PART WITHOUT WRITTEN CONSENT OF ABOVE CLIENT.



Plant North

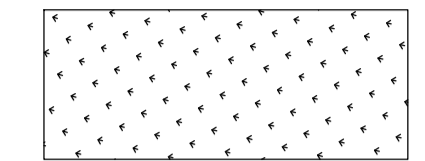
PLANS AND DOCUMENTS referred to in the SDA APPROVAL



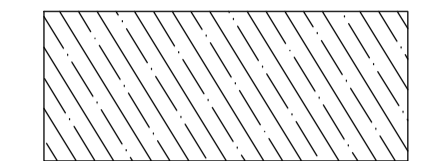
SDA approval: APC2021/012

LEGEND

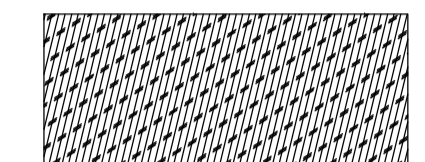
GRASS



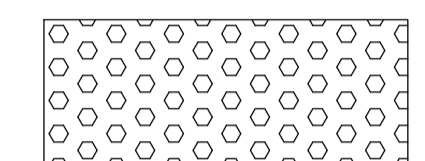
HARDSTAND



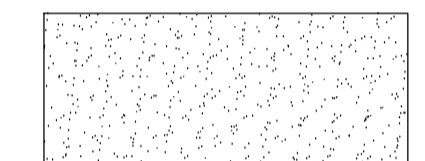
SWALE



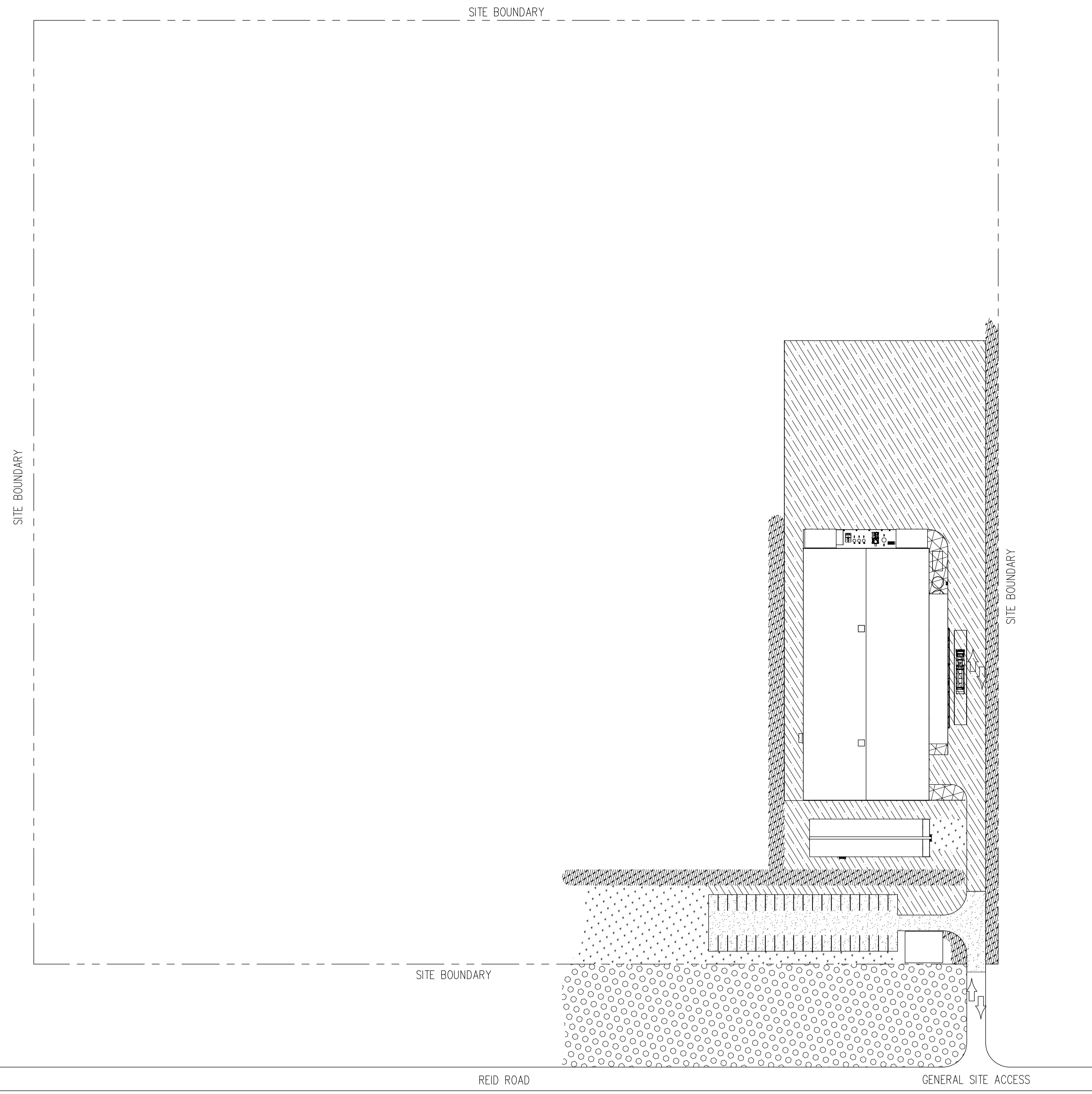
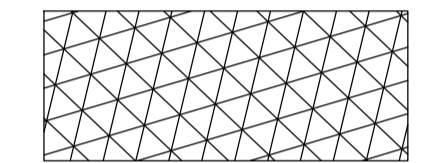
TREES / GRASS (EXISTING)



BITUMEN



CONCRETE



CONFIDENTIAL

ISSUED FOR INFORMATION

DOC No.	DESCRIPTION	REV No	DESCRIPTION	DRN	CHK'D	ENG	APPR'D	DATE
MC21023-1810-C-DRG-001	EARTHWORKS - OVERALL SITE PLAN	B	UPDATED FOR LAYOUT OCT 2021	AMC	JH	JH		19.10.21
MC1868-G-031	STAGE 1 - PPF	A	ISSUED FOR INFORMATION	CAM	JH	JH		20.08.21

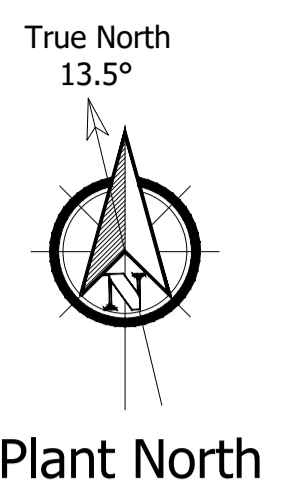
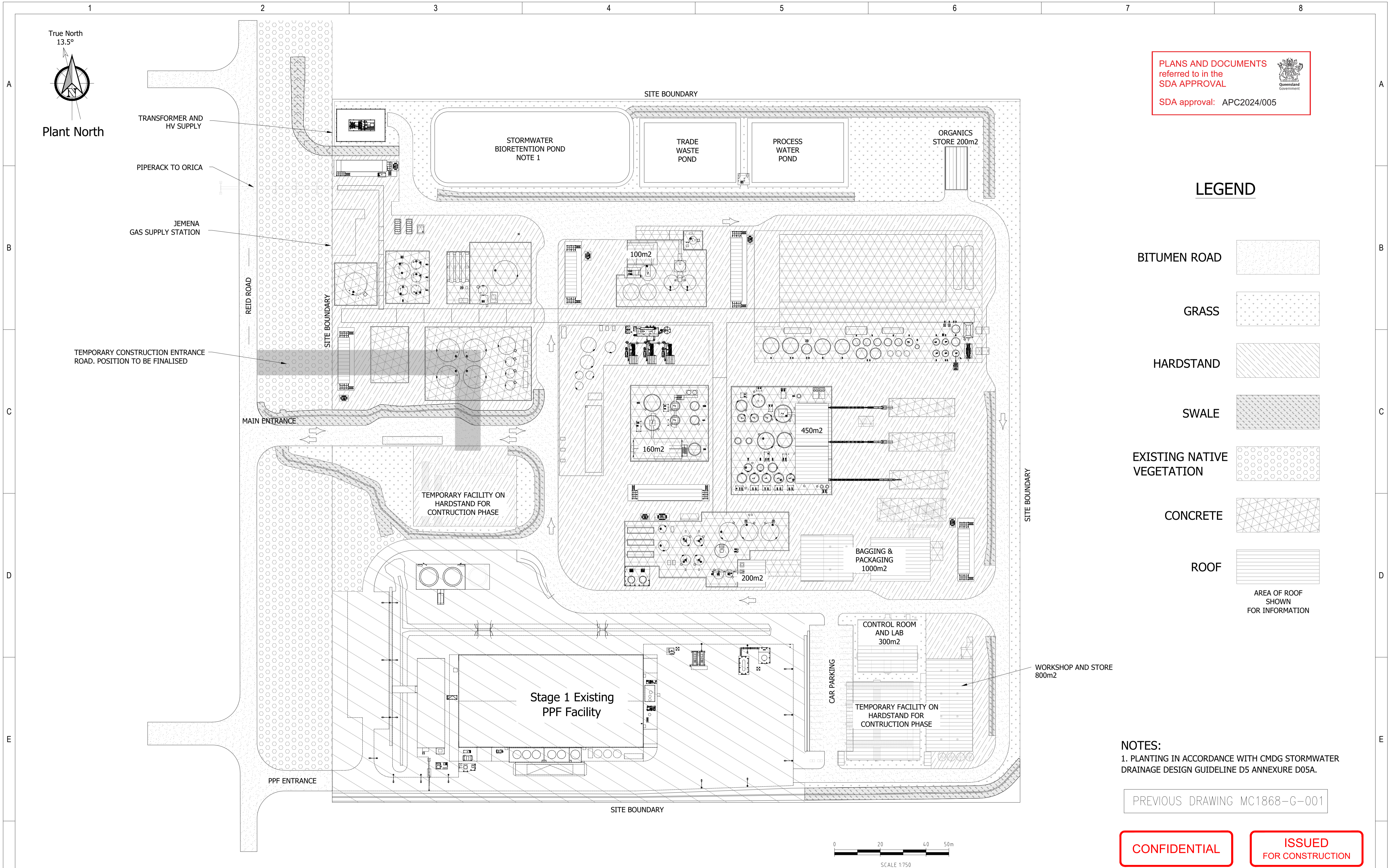
Alpha HPA

PRUDENTIA PROCESS CONSULTING

THIS DRAWING REMAINS THE PROPERTY OF ABOVE CLIENT AND SHALL NOT BE USED OR REPRODUCED OR ANY OF ITS CONTENTS IN WHOLE OR PART WITHOUT WRITTEN CONSENT OF ABOVE CLIENT.

SCALE:	1:750
DRAWN	
CHECKED	
ENGINEER	
APPROVED	
CLIENT	
A1	

PRECURSOR PRODUCTION FACILITY	
GENERAL SITE WIDE - STAGE 1	
LANDSCAPING PLAN	
GENERAL DETAILS	
DRG. No.	MC21023-1810-C-DRG-020
Rev	B



PLANS AND DOCUMENTS referred to in the SDA APPROVAL
 Queensland Government
 SDA approval: APC2024/005

LEGEND

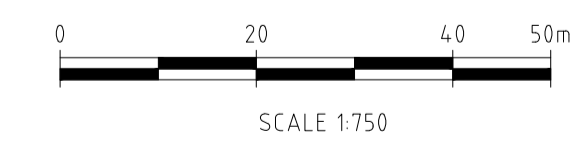
- BITUMEN ROAD
- GRASS
- HARDSTAND
- SWALE
- EXISTING NATIVE VEGETATION
- CONCRETE
- ROOF
- AREA OF ROOF SHOWN FOR INFORMATION

NOTES:
 1. PLANTING IN ACCORDANCE WITH CMDG STORMWATER DRAINAGE DESIGN GUIDELINE D5 ANNEXURE D05A.

PREVIOUS DRAWING MC1868-G-001

CONFIDENTIAL

ISSUED FOR CONSTRUCTION



NUMBER	REFERENCE DRAWINGS	REV	DATE	REVISION DESCRIPTION	DRN	CHK	ENG	REG No.	APP
		1	02.08.24	SITE LAYOUT REVISED	AMC	DO	DO		TC
		0	27.06.24	ISSUED FOR CONSTRUCTION	AMC	DO	DO		TC
		C	24.05.24	SITE LAYOUT UPDATED	AMC	JH	JH		TC
		B	29.04.24	SITE LAYOUT UPDATED	AMC	JH	JH		TC
		A	19.02.24	ISSUED FOR INFORMATION	AMC	JH	JH		TC

Alpha HPA

THIS DRAWING REMAINS THE PROPERTY OF THE ABOVE CLIENT AND SHALL NOT BE USED OR REPRODUCED WITHOUT WRITTEN CONSENT.

Prudentia ENGINEERING

SCALE	1:750
DRAWN	A.MCCREDDEN 08.11.23
CHECKED	J. HEPBURN 19.02.24
ENGINEER	J. HEPBURN 19.02.24
APPROVED	T. CHOW 19.02.24
CLIENT	

ALPHA HPA
 HPA FIRST PROJECT
 OVERALL SITE PLAN
 LANDSCAPING DETAILS

DRG. No. **MC23050-000-Z-GAR-00004**

REV 1

Air Quality Impact Assessment

HPA Processing Plant

PLANS AND DOCUMENTS
referred to in the
SDA APPROVAL



SDA approval: APC2024/005

Plume Rise Assessment

HPA Processing Plant

PLANS AND DOCUMENTS
referred to in the
SDA APPROVAL



SDA approval: APC2024/005

Preliminary Operational Noise Impact Assessment

HPA Processing Plant

29-May-2024
Alpha HPA

PLANS AND DOCUMENTS
referred to in the
SDA APPROVAL



SDA approval: APC2024/005

Site Water Management Plan Update

Gladstone High Purity Alumina Site

04-Jul-2024
Gladstone High Purity Alumina Site
Doc No. 60617664

PLANS AND DOCUMENTS
referred to in the
SDA APPROVAL



SDA approval: APC2024/005

Site Based Management Plan

HPA Processing Plant

PLANS AND DOCUMENTS
referred to in the
SDA APPROVAL



SDA approval: APC2021/012



ACCESS TRAFFIC
CONSULTING



PLANS AND DOCUMENTS
referred to in the
SDA APPROVAL



SDA approval: APC2021/012

Alpha HPA Project, Yarwun Traffic Impact Assessment

October 2021

Prepared for Alpha HPA Limited

Ecological Assessment Report

HPA Processing Plant

PLANS AND DOCUMENTS
referred to in the
SDA APPROVAL



SDA approval: APC2021/012