


PLANS AND DOCUMENTS
referred to in the
SDA APPROVAL

SDA approval: AP2022/018



LEGEND

- CADASTRAL APPROXIMATION OF BOUNDARY BY AAM HATCH
- ALIGNMENT BASED ON COORDINATE APPROXIMATION
- LOT 1 RP607796
- CAV
- SPV
- SCV
- IV
- FC
- RIGHT OF WAY

PROPERTY DESCRIPTION

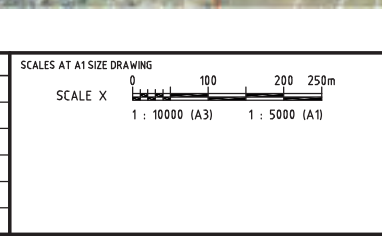
- COMBINATION AIR VALVE - REFER DWG 0207 FOR DETAILS
- SURGE PROTECTION AIR VALVE - REFER DWG 0201 FOR DETAILS
- SCOUR VALVE - REFER DWG 0201 FOR DETAILS
- ISOLATION VALVE - REFER DWG 0201 FOR DETAILS
- FUTURE CONNECTION - REFER DWG 0202 FOR DETAILS

NOTE
1. FOR SMEC'S DISCLAIMER REFER DRAWING 30032687-DWG-32000-G-0112

NOT FOR CONSTRUCTION

DRAWING FILE LOCATION / NAME V:_Vault\Projects\3003\30032687\GFP-DE Project\110_CADD\CAD\DWG\01 30 GL\34100 ALTON DOWNS TO RAGLAN PIPELINE\30032687-DWG-34100-C-4033.dwg		PLOT DATE 23 Nov 2022		TIME 13:03:12	
EXTERNAL REFERENCE FILES	REV	DATE	AMENDMENT / REVISION DESCRIPTION	MWR No.	APPROVAL
X_5000_DWG_LEGEND	A	20.08.21	30% CONCEPT DESIGN	006	MSL
X_30032687_SHEC_A1	B	14.01.22	CONCEPT DESIGN-ECI PHASE	006	MSL
X_VALVES	C	30.06.22	OPTIMISED CONCEPT DESIGN	006	MSL
X_CONTOUR_1m INTERVAL	D	18.11.22	UPDATED RIGHT OF WAY	037	MSL
X_30032687_GFP_Aerial_Image					
X_DC08					
X_30032687_GFP_Aerial_Image_3					
X_30032687_GFP_Alignment_2522					
X_30032687_GFP_ROW					

NAME	DESIGNER	DESIGN CHECK	PROJECT MANAGER	PROJECT DIRECTOR
SUCHITH.R	C.BOU	J.WAGENAAR	M.SERRANO LOPEZ	D.TAYLOR



DESIGNER



Member of the Saurburt Group
© ABN 47 065 475 149
LEVEL 6, 480 ST PAULS TERRACE
FORTITUDE VALLEY QLD 4006
SMEC PROJECT No 30032687

CLIENT



PROJECT TITLE FITZROY TO GLADSTONE PIPELINE PROJECT 30GLA - ALTON DOWNS TO RAGLAN PIPELINE LAYOUT PLAN CH54500 TO CH57000 SHEET 16			
SCALE 1:5000	PHASE CONCEPT DESIGN	PROJECT / DRAWING No. 30032687-DWG-34100-C-4033	REVISION D

150 mm ON ORIGINAL

LEGEND

CADASTRAL APPROXIMATION PROVIDED BY AAM HATCH

ALIGNMENT BASED ON CORRIDOR APPROXIMATION

PROPERTY DESCRIPTION

 COMBINATION AIR VALVE - REFER DWG 0207 FOR DETAILS

 SURGE PROTECTION AIR VALVE - REFER DWG 0208 FOR DETAILS

 SCOUR VALVE - REFER DWG 0208 FOR DETAILS

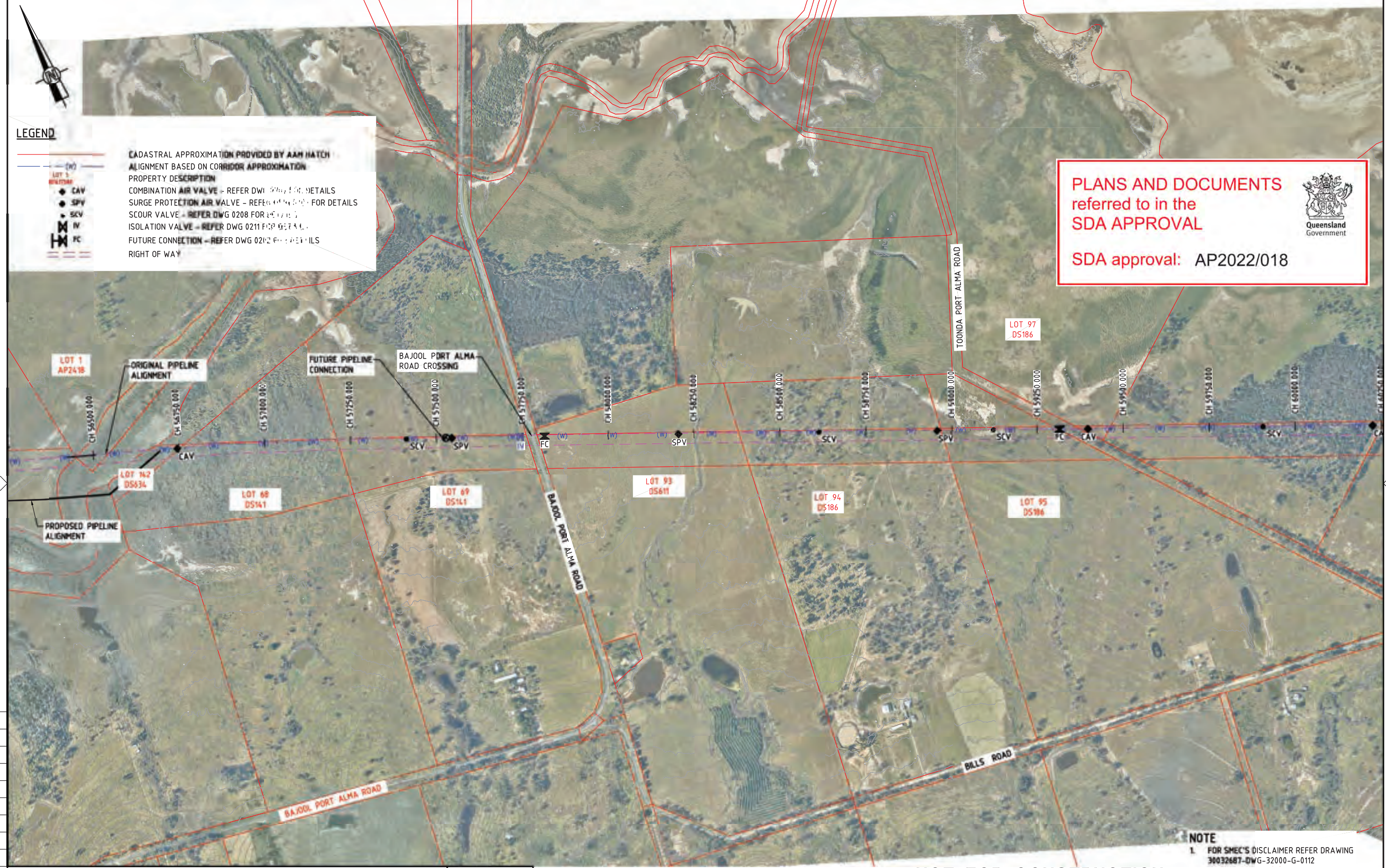
 ISOLATION VALVE - REFER DWG 0211 FOR DETAILS

 FUTURE CONNECTION - REFER DWG 0212 FOR DETAILS

 RIGHT OF WAY

PLANS AND DOCUMENTS
 referred to in the
SDA APPROVAL

SDA approval: AP2022/018



150 mm ON ORIGINAL

NOTE
 1. FOR SMEC'S DISCLAIMER REFER DRAWING 30032687-DWG-32000-G-0112

NOT FOR CONSTRUCTION

DRAWING FILE LOCATION / NAME		PLOT DATE		TIME	
V:_Vault\Projects\3003\30032687\GFP-DE Project\110_CADD\CAD\DWG\0130 GL\34100 ALTON DOWNS TO RAGLAN PIPELINE\30032687-DWG-34100-C-4034.dwg		23 Nov 2022		14:41:11	
REV	DATE	AMENDMENT / REVISION DESCRIPTION	MVR No.	APPROVAL	TITLE
A	20.08.21	30% CONCEPT DESIGN	006	MSL	DRAFTER
B	14.01.22	CONCEPT DESIGN-ECI PHASE	006	MSL	DRAFTING CHECK
C	10.10.22	OPTIMISED CONCEPT DESIGN	036	MSL	DESIGNER
D	18.11.22	UPDATED RIGHT OF WAY	037	MSL	DESIGN CHECK

NAME	DESIGNER	DESIGN CHECK	PROJECT MANAGER	PROJECT DIRECTOR
SUCHITH.R	C.BOU	J.WAGENAAR	M.SERRANO LOPEZ	D.TAYLOR

SCALES AT A1 SIZE DRAWING
 SCALE X

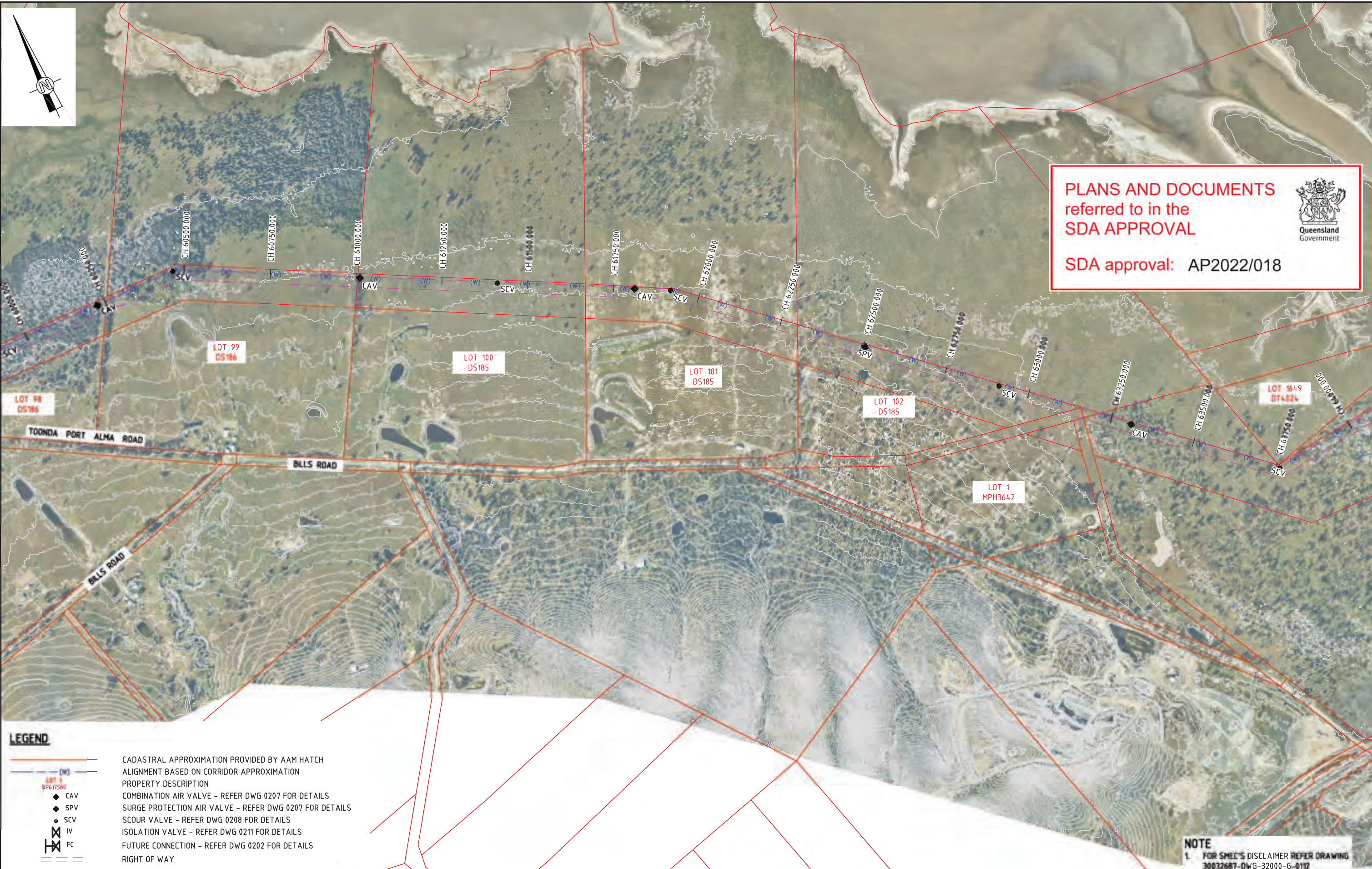
 1 : 10000 (A3) 1 : 5000 (A1)

DESIGNER

 Member of the Saurburt Group
 © ABN 47 065 475 149
 LEVEL 6, 480 ST PAULS TERRACE
 FORTITUDE VALLEY QLD 4006
 SMEC PROJECT No 30032687

CLIENT

PROJECT TITLE FITZROY TO GLADSTONE PIPELINE PROJECT 30GLA - ALTON DOWNS TO RAGLAN PIPELINE LAYOUT PLAN CH57000 TO CH60500 SHEET 17			
SCALE	PHASE	PROJECT / DRAWING No.	REVISION
1:5000	CONCEPT DESIGN	30032687-DWG-34100-C-4034	D



PLANS AND DOCUMENTS referred to in the SDA APPROVAL

SDA approval: AP2022/018



LEGEND

	CADASTRAL APPROXIMATION PROVIDED BY AAM HATCH
	ALIGNMENT BASED ON CORRIDOR APPROXIMATION
	PROPERTY DESCRIPTION
	CAV COMBINATION AIR VALVE - REFER DWG 0207 FOR DETAILS
	SPV SURGE PROTECTION AIR VALVE - REFER DWG 0207 FOR DETAILS
	SCV SCOUR VALVE - REFER DWG 0208 FOR DETAILS
	IV ISOLATION VALVE - REFER DWG 0211 FOR DETAILS
	FC FUTURE CONNECTION - REFER DWG 0202 FOR DETAILS
	RIGHT OF WAY

NOTE
1. FOR SMEC'S DISCLAIMER REFER DRAWING 30032687-DWG-32000-G-0112

NOT FOR CONSTRUCTION

DRAWING FILE LOCATION / NAME V:_Vault\Projects\3003\30032687\GFP-DE Project\110_CADD\CAD\DWG\01 30 GL\34100 ALTON DOWNS TO RAGLAN PIPELINE\30032687-DWG-34100-C-4035.dwg		PLOT DATE 22 Nov 2022		TIME 19:30:13	
EXTERNAL REFERENCE FILES	REV	DATE	AMENDMENT / REVISION DESCRIPTION	MVR No.	APPROVAL
X_5000_DWG_LEGEND	A	20.08.21	30% CONCEPT DESIGN	006	MSL
X_30032687_SHEC_A1	B	14.01.22	CONCEPT DESIGN-ECI PHASE	006	MSL
X_VALVES	C	30.06.22	OPTIMISED CONCEPT DESIGN	006	MSL
X_CONTOUR 1m INTERVAL	D	18.11.22	UPDATED RIGHT OF WAY	037	MSL
X_DWG					
SS_30032687_GFP_Aerial Image					
X_30032687_GFP_Aerial Image_3					
X_30032687_GFP_ROW					
X_30032687_GFP_Alignment_2022					

DESIGNER	SUCHITH.R
DRAFTING CHECK	C.BOU
DESIGNER	J.W.AGENAAR
DESIGN CHECK	M.SERRANO LOPEZ
PROJECT MANAGER	M.SERRANO LOPEZ
PROJECT DIRECTOR	D.TAYLOR

SCALES AT A1 SIZE DRAWING

SCALE X

1 : 10000 (A3) 1 : 5000 (A1)

SMEC

Members of the Saurburt Group

© ABN 47 065 475 149

LEVEL 6, 480 ST PAULS TERRACE
FORTITUDE VALLEY QLD 4006
SMEC PROJECT No 30032687

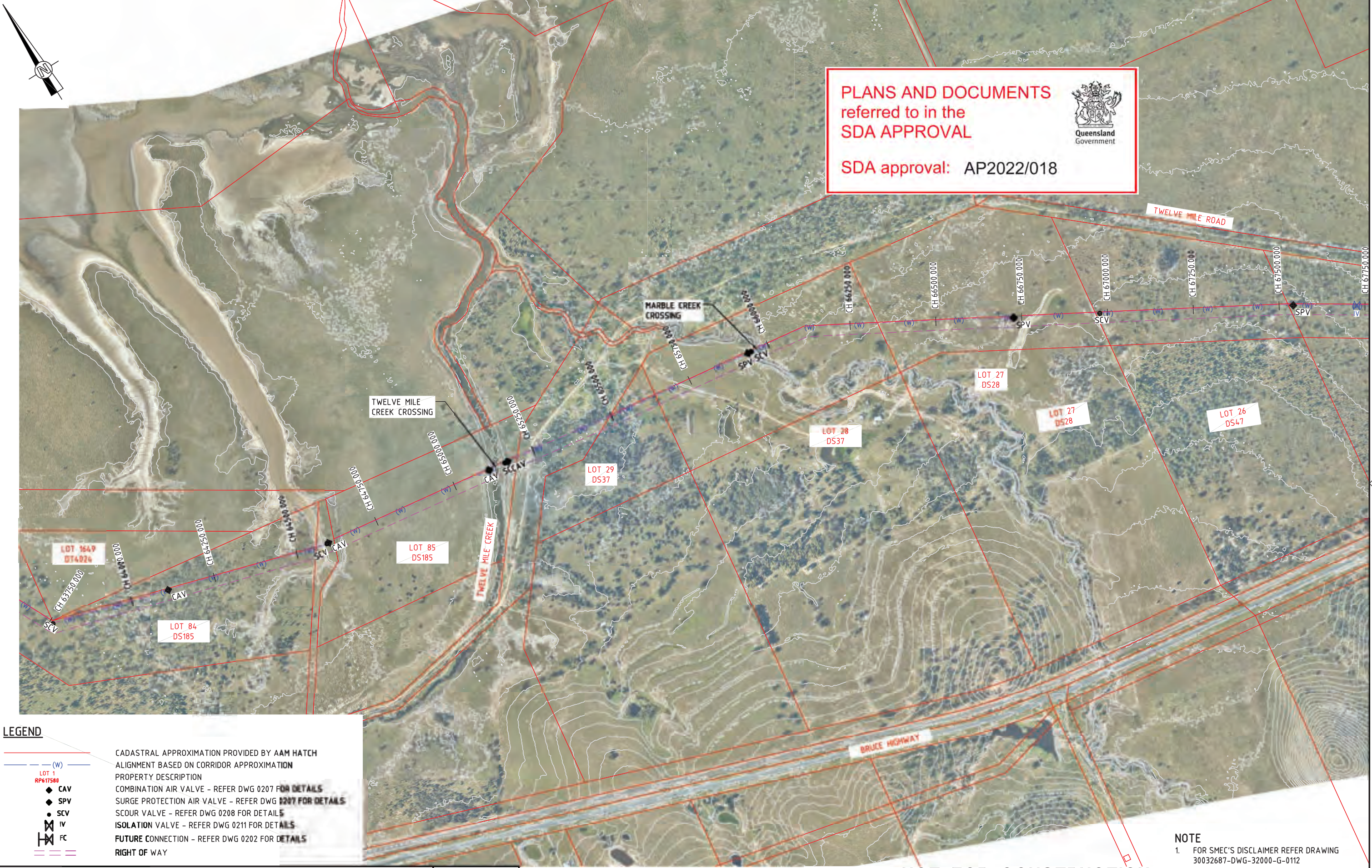
CLIENT

Gladstone Area Water Board

PROJECT TITLE FITZROY TO GLADSTONE PIPELINE PROJECT 30GLA - ALTON DOWNS TO RAGLAN PIPELINE LAYOUT PLAN CH60500 TO CH64500 SHEET 18			
SCALE 1:5000	PHASE CONCEPT DESIGN	PROJECT / DRAWING No. 30032687-DWG-34100-C-4035	REVISION D


150 mm ON ORIGINAL

A1



PLANS AND DOCUMENTS
referred to in the
SDA APPROVAL

SDA approval: AP2022/018



LEGEND

	CADASTRAL APPROXIMATION PROVIDED BY AAM HATCH
	ALIGNMENT BASED ON CORRIDOR APPROXIMATION
	PROPERTY DESCRIPTION
	COMBINATION AIR VALVE - REFER DWG 0207 FOR DETAILS
	SURGE PROTECTION AIR VALVE - REFER DWG 0207 FOR DETAILS
	SCOUR VALVE - REFER DWG 0208 FOR DETAILS
	ISOLATION VALVE - REFER DWG 0211 FOR DETAILS
	FUTURE CONNECTION - REFER DWG 0202 FOR DETAILS
	RIGHT OF WAY

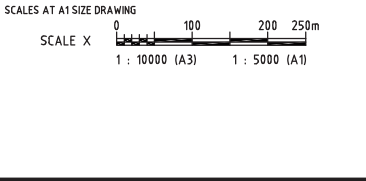
NOTE
1. FOR SMEC'S DISCLAIMER REFER DRAWING 30032687-DWG-32000-G-0112

NOT FOR CONSTRUCTION

DRAWING FILE LOCATION / NAME
V:_Vault\Projects\3003\30032687\GFP-DE Project\110_CADD\CAD\DWG\01 30 GL\34100 ALTON DOWNS TO RAGLAN PIPELINE\30032687-DWG-34100-C-4036.dwg

PLOT DATE 22 Nov 2022 TIME 19:31:03

EXTERNAL REFERENCE FILES	REV	DATE	AMENDMENT / REVISION DESCRIPTION	MVR No.	APPROVAL	TITLE	NAME
X_5000_DWG_LEGEND	A	20.08.21	30% CONCEPT DESIGN	006	MSL	DRAFTER	SUCHITH.R
X_30032687_SHEC_A1	B	14.01.22	CONCEPT DESIGN-ECI PHASE	006	MSL	DRAFTING CHECK	C.BOU
X_VALVES	C	30.06.22	OPTIMISED CONCEPT DESIGN	006	MSL	DESIGNER	J.WAGENAAR
X_CONTOUR Int INTERVAL	D	18.11.22	UPDATED RIGHT OF WAY	037	MSL	DESIGN CHECK	M.SERRANO LOPEZ
SS_30032687_GFP_Aerial Image						PROJECT MANAGER	M.SERRANO LOPEZ
X_30032687_GFP_Aerial Image_3						PROJECT DIRECTOR	D.TAYLOR
X_30032687_GFP_Alignment_2522							
X_30032687_GFP_ROW							



DESIGNER



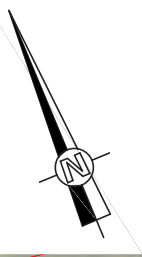
Member of the Saurburt Group
© ABN 47 065 475 149
LEVEL 6, 480 ST PAULS TERRACE
FORTITUDE VALLEY QLD 4006
SMEC PROJECT No 30032687

CLIENT



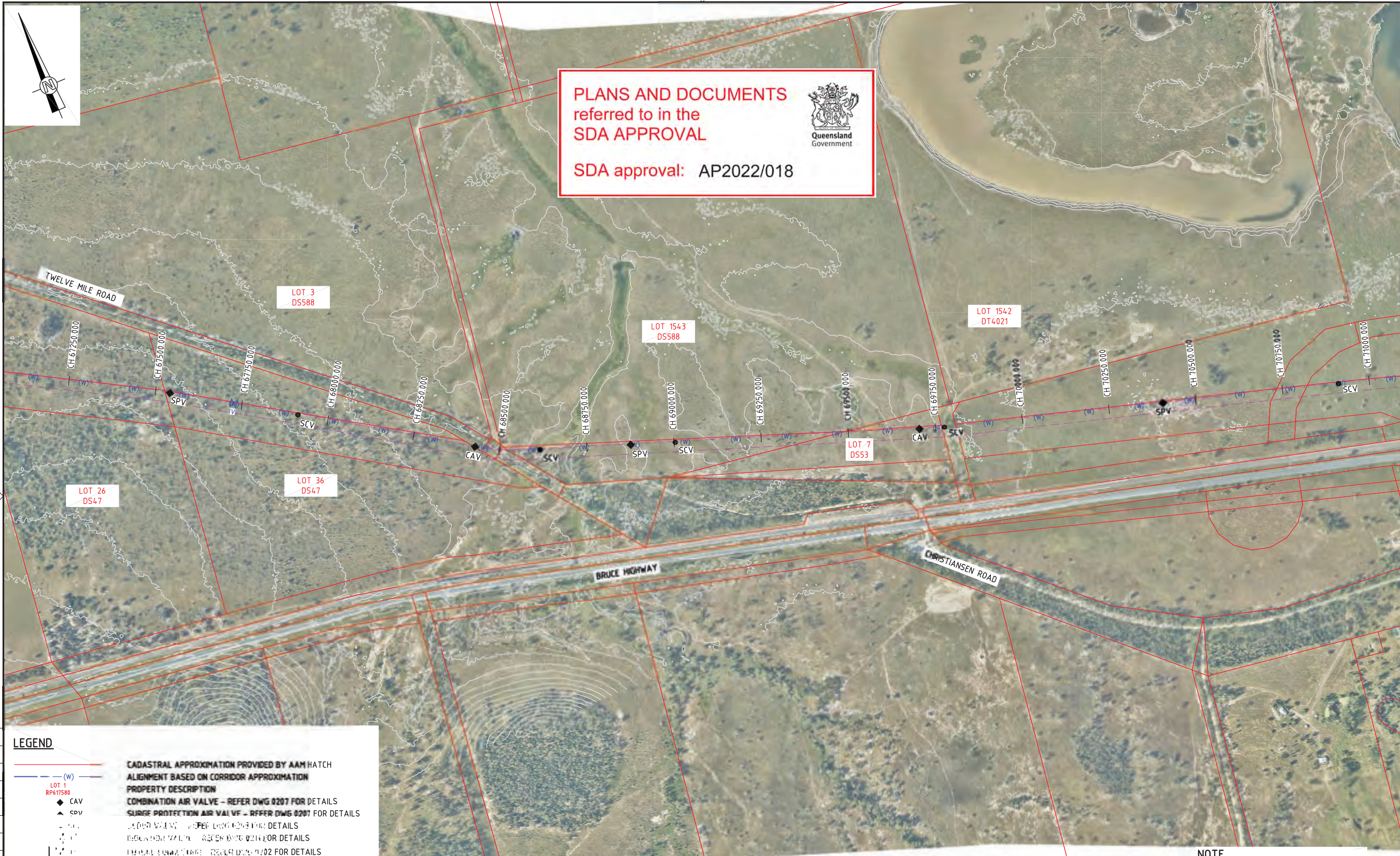
PROJECT TITLE FITZROY TO GLADSTONE PIPELINE PROJECT 30GLA - ALTON DOWNS TO RAGLAN PIPELINE LAYOUT PLAN CH64500 TO CH68000 SHEET 19			
SCALE 1:5000	PHASE CONCEPT DESIGN	PROJECT / DRAWING No. 30032687-DWG-34100-C-4036	REVISION D

150 mm ON ORIGINAL
150
140
130
120
110
100
90
80
70
60
50
40
30
20
10
0



PLANS AND DOCUMENTS
referred to in the
SDA APPROVAL

SDA approval: AP2022/018



LEGEND

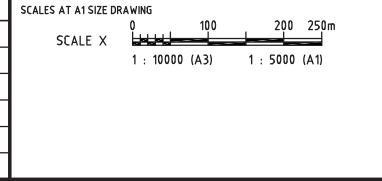
- CADASTRAL APPROXIMATION PROVIDED BY AAM HATCH
- ALIGNMENT BASED ON CORRIDOR APPROXIMATION
- PROPERTY DESCRIPTION
- COMBINATION AIR VALVE - REFER DWG 0207 FOR DETAILS
- SURGE PROTECTION AIR VALVE - REFER DWG 0207 FOR DETAILS
- ISOLATION VALVE - REFER DWG 0210 FOR DETAILS
- TRENCH VALVE - REFER DWG 0210 FOR DETAILS
- RIGHT OF WAY

NOTE
1. FOR SMEC'S DISCLAIMER REFER DRAWING 30032687-DWG-32000-G-0112

150 mm ON ORIGINAL
140
130
120
110
100
90
80
70
60
50
40
30
20
10
A1

DRAWING FILE LOCATION / NAME V:_Vault\Projects\3003\30032687-GFP-0E Project\110_CADD\CAD\DWG\01 30 GL\34100 ALTON DOWNS TO RAGLAN PIPELINE\30032687-DWG-34100-C-4037.dwg	PLOT DATE 22 Nov 2022	TIME 19:34:37
--	--------------------------	------------------

EXTERNAL REFERENCE FILES	REV	DATE	AMENDMENT / REVISION DESCRIPTION	MWR No.	APPROVAL	TITLE	NAME
X_5000_DWG_LEGEND	A	20.08.21	30% CONCEPT DESIGN	006	MSL	DRAFTER	SUCHITH.R
X_30032687_SHEC_A1	B	14.01.22	CONCEPT DESIGN-ECI PHASE	006	MSL	DRAFTING CHECK	C.BOU
X_VALVES	C	30.06.22	OPTIMISED CONCEPT DESIGN	006	MSL	DESIGNER	J.W.AGENAAR
X_CONTOUR 1m INTERVAL	D	18.11.22	UPDATED RIGHT OF WAY	037	MSL	DESIGN CHECK	M.SERRANO LOPEZ
X_DWG						PROJECT MANAGER	M.SERRANO LOPEZ
SS_30032687_GFP_Aerial Image						PROJECT DIRECTOR	D.TAYLOR
X_30032687_GFP_Aerial Image_3							
X_30032687_GFP_RIW							
X_30032687_GFP_Alignment_2022							



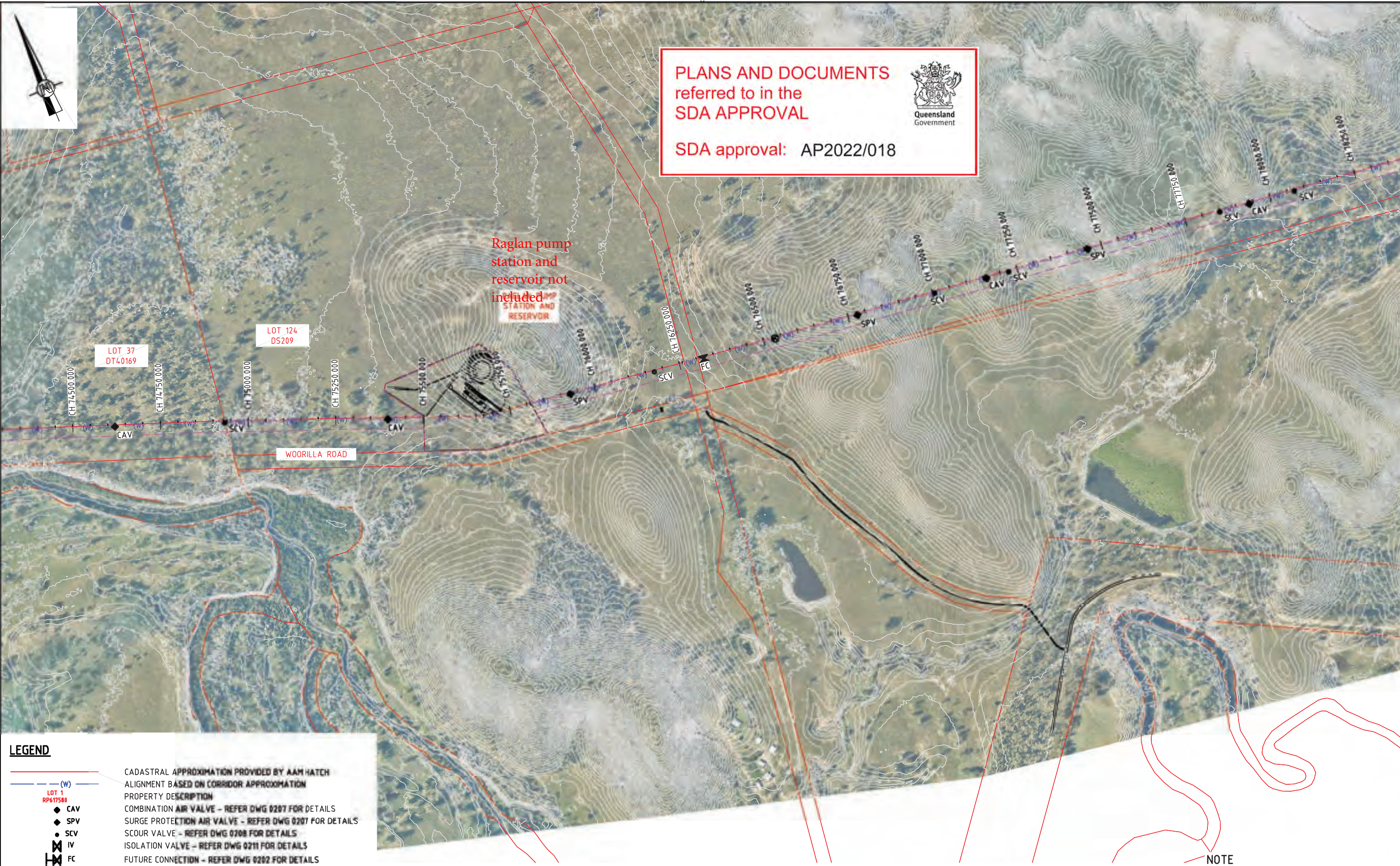
DESIGNER

Members of the Sutherland Shire Council
© ABN 47 065 475 149
LEVEL 6, 480 ST PAULS TERRACE
FORTITUDE VALLEY QLD 4006
SMEC PROJECT No 30032687

CLIENT

NOT FOR CONSTRUCTION

PROJECT TITLE FITZROY TO GLADSTONE PIPELINE PROJECT 30GLA - ALTON DOWNS TO RAGLAN PIPELINE LAYOUT PLAN CH68000 TO CH71500 SHEET 20			
SCALE 1:5000	PHASE CONCEPT DESIGN	PROJECT / DRAWING No. 30032687-DWG-34100-C-4037	REVISION D



PLANS AND DOCUMENTS
referred to in the
SDA APPROVAL

SDA approval: AP2022/018



Raglan pump
station and
reservoir
not
included

LOT 37
DT40169

LOT 124
DS209

WOORILLA ROAD

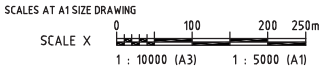
LEGEND

	CADASTRAL APPROXIMATION PROVIDED BY AAM HATCH
	ALIGNMENT BASED ON CORRIDOR APPROXIMATION
	PROPERTY DESCRIPTION
	CAV COMBINATION AIR VALVE - REFER DWG 0207 FOR DETAILS
	SPV SURGE PROTECTION AIR VALVE - REFER DWG 0207 FOR DETAILS
	SCV SCOUR VALVE - REFER DWG 0208 FOR DETAILS
	IV ISOLATION VALVE - REFER DWG 0211 FOR DETAILS
	FC FUTURE CONNECTION - REFER DWG 0202 FOR DETAILS
	RIGHT OF WAY

NOTE
1. FOR SMEC'S DISCLAIMER REFER DRAWING
30032687-DWG-32000-G-0112

NOT FOR CONSTRUCTION

DRAWING FILE LOCATION / NAME V:_Vault\Projects\3003\30032687\GFP-DE Project\110_CADD\CAD\DWG\01 30 GL\34100 ALTON DOWNS TO RAGLAN PIPELINE\30032687-DWG-34100-C-4039.dwg		PLOT DATE 22 Nov 2022		TIME 19:39:55	
REV	DATE	AMENDMENT / REVISION DESCRIPTION	MWR No.	APPROVAL	TITLE
A	20.08.21	30% CONCEPT DESIGN	006	MSL	DRAFTER <i>SUCHITH.R</i>
B	14.01.22	CONCEPT DESIGN-ECI PHASE	006	MSL	DRAFTING CHECK <i>C.BOU</i>
C	30.06.22	OPTIMISED CONCEPT DESIGN	006	MSL	DESIGNER <i>J.WAGENAAR</i>
D	18.11.22	UPDATED RIGHT OF WAY	039	MSL	DESIGN CHECK <i>M.SERRANO LOPEZ</i>
					PROJECT MANAGER <i>M.SERRANO LOPEZ</i>
					PROJECT DIRECTOR <i>D.TAYLOR</i>



DESIGNER

Member of the Saurburt Group
© ABN 47 065 475 149
LEVEL 6, 480 ST PAULS TERRACE
FORTITUDE VALLEY QLD 4006
SMEC PROJECT No 30032687

CLIENT

PROJECT TITLE FITZROY TO GLADSTONE PIPELINE PROJECT 30GLA - ALTON DOWNS TO RAGLAN PIPELINE LAYOUT PLAN CH75000 TO CH78500 SHEET 22			
SCALE 1:5000	PHASE CONCEPT DESIGN	PROJECT / DRAWING No. 30032687-DWG-34100-C-4039	REVISION D

150 mm ON ORIGINAL
A1

PLANS AND DOCUMENTS referred to in the SDA APPROVAL



SDA approval: AP2022/018

STANDARD PIPELINE NOTES:

- SERVICES SHOWN ARE APPROXIMATE ONLY AND ARE THOSE RECEIVED FROM DBYD TO DATE (VALID FOR LIMITED PERIOD). EXACT LOCATION TO BE DETERMINED ON SITE.
- BOREHOLES SHOWN ARE APPROXIMATE ONLY AND ARE THOSE RECEIVED TO DATE. EXACT LOCATION TO BE DETERMINED ON SITE.
- MINIMUM PIPELINE COVER = 750mm (EXCEPT IN FLOOD PRONE AREAS)
- MINIMUM PIPELINE COVER IN FLOOD PRONE AREAS = 1100mm (CH 4100 TO CH 44300 & CH 49400 TO 75000)
- MAXIMUM PIPELINE COVER = 3500mm
- MINIMUM PIPELINE COVER UNDER ROADS = 900mm
- MINIMUM PIPELINE COVER UNDER CREEKS = 900mm
- MAXIMUM DESIGN PRESSURE FOR PIPELINE SECTION = 210m

STANDARD CROSSING NOTES:

- REFER TO PIPELINE LONG PROFILE DRAWINGS FOR DETAILS OF PIPE AND FITTINGS
- ALL PIPE JOINTS TO BE WELDED WITHIN CONCRETE ENCASMENT SECTION AND ENCASING PIPE
- CLASS AND DETAILS OF ENCASING PIPE TO BE DETERMINED BY SPECIALIST DRILLING CONTRACTOR.
- REINFORCED CONCRETE ENCASING PIPE TO BE USED FOR RAIL CROSSINGS AND COMBINED ROAD & RAIL CROSSINGS.
- FOR ALL OTHER CROSSINGS, TYPE OF ENCASING PIPE TO BE DETERMINED BY SPECIALIST DRILLING CONTRACTOR AND APPROVED BY PRINCIPAL CONTRACTOR.
- ENCASING PIPE TO BE INSTALLED BY THRUST BORING OR MICRO TUNNELLING METHOD.
- ENCASING PIPE TO EXTEND MIN 2m PAST TOE OF BATTER FOR ROAD/RAIL EMBANKMENT.
- ENCASING PIPE TO EXTEND MIN 2.0m PAST EDGE OF CREEK BANK

LEGEND

- CADASTRAL APPROXIMATION BASED ON ASSUMPTION FROM IMAGE INFORMATION
- ALTON DOWNS EASEMENT CORRIDOR APPROXIMATION BASED ON CADASTRAL APPROXIMATION
- STANWELL-GLADSTONE INFRASTRUCTURE CORRIDOR APPROXIMATION BASED ON CADASTRAL APPROXIMATION
- PRELIMINARY ALIGNMENT BASED ON CORRIDOR APPROXIMATION
- PROPERTY DESCRIPTION
- COMBINATION AIR VALVE (PLAN & L.S.) - REFER DWG 30032656-DWG-34000-C-0207 FOR DETAILS
- SURGE PROTECTION AIR VALVE (PLAN & L.S.) - REFER DWG 30032656-DWG-34000-C-0207 FOR DETAILS
- SCOUR VALVE (PLAN & L.S.) - REFER DWG 30032656-DWG-34000-C-0208 FOR DETAILS
- ISOLATION VALVE (PLAN & L.S.) - REFER DWG 30032656-DWG-34000-C-0211 FOR DETAILS
- FUTURE CONNECTION (PLAN & L.S.) - REFER DWG 30032656-DWG-34000-C-0202 FOR DETAILS
- MAGMASTER FLOWMETER (PLAN) - REFER DWG 30032656-DWG-34000-C-0209 FOR DETAILS
- V(-) 11.25°B + 3.83° VERTICAL BEND WITH PIPE DEFLECTIONS
- V-3.83° VERTICAL PIPE DEFLECTIONS
- H(-) 11.25°B + 3.83° HORIZONTAL BEND WITH PIPE DEFLECTIONS
- H-3.83° HORIZONTAL PIPE DEFLECTIONS
- OF EXISTING OPTIC FIBRE CABLE
- EXISTING GAS SERVICE (ALINTA)
- EXISTING GAS SERVICE (APA GROUP)
- EXISTING ENERGEX SERVICE
- EXISTING TELSTRA SERVICE

SUMMARY TABLE OF PIPE SECTION LENGTHS

CHAINAGE	CHAINAGE	LENGTH	DESCRIPTION
4006.508	56501.430	52494.922	ALTON DOWNS P.S. TO PROPOSED REALIGNMENT (INKERMAN CREEK)
56501.430 = 0.000	693.388	693.388	PROPOSED REALIGNMENT (INKERMAN CREEK)
693.388 = 57178.483	75985.662	18807.179	PROPOSED REALIGNMENT (INKERMAN CREEK) TO RAGLAN P.S.

SETOUT NOTE:

- START OF PIPELINE CONTROL LINE AT CH 4006.508 COINCIDES WITH THE SOUTHERN BOUNDARY OF LOT 40 PL641.

NOTE

- FOR SMEC'S DISCLAIMER REFER DRAWING 30032687-DWG-32000-G-0112

NOT FOR CONSTRUCTION

150 mm ON ORIGINAL
150
140
130
120
110
100
90
80
70
60
50
40
30
20
10
0

DRAWING FILE LOCATION / NAME V:_Vault\Projects\3003\30032687\GFP-DE Project\110_CADD\CAD\DWG\01 30 GL\34100 ALTON DOWNS TO RAGLAN PIPELINE\30032687-DWG-34100-C-4040.dwg		PLOT DATE 22 Nov 2022		TIME 19:41:42	
EXTERNAL REFERENCE FILES X_30032656_SMEC_A1	REV A B C	DATE 20.08.21 14.01.22 30.06.22	AMENDMENT / REVISION DESCRIPTION 30% CONCEPT DESIGN CONCEPT DESIGN-ECI PHASE OPTIMISED CONCEPT DESIGN	MWR No. 006 006 006	APPROVAL MSL MSL MSL
					TITLE DRAFTER DRAFTING CHECK DESIGNER DESIGN CHECK PROJECT MANAGER PROJECT DIRECTOR
					NAME SUCHITH.R C.BOU J.WAGENAAR M.SERRANO LOPEZ M.SERRANO LOPEZ D.TAYLOR

SCALES AT A1 SIZE DRAWING

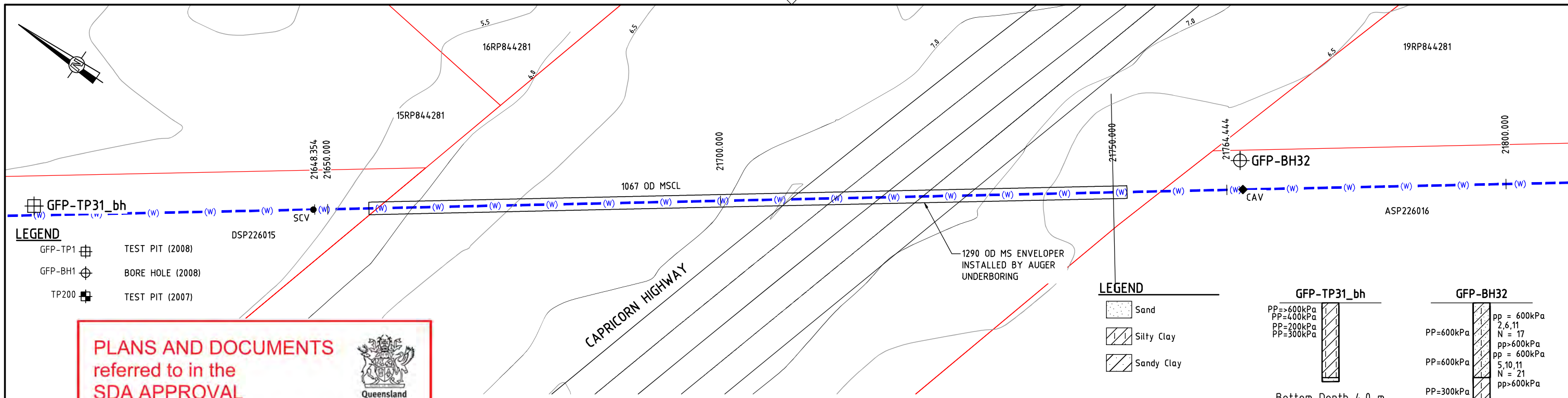
DESIGNER

Member of the Surlana Jurong Group
© ABN 47 065 475 149
LEVEL 6, 480 ST PAULS TERRACE
FORTITUDE VALLEY QLD 4006
SMEC PROJECT No 30032687

CLIENT

Gladstone Area Water Board

PROJECT TITLE FITZROY TO GLADSTONE PIPELINE PROJECT 30GLA - ALTON DOWNS TO RAGLAN PIPELINE PLAN AND LONGITUDINAL SECTION GENERAL NOTES & LEGEND SHEET 1			
SCALE	PHASE CONCEPT DESIGN	PROJECT / DRAWING No. 30032687-DWG-34100-C-4040	REVISION C



- LEGEND**
- GFP-TP1 TEST PIT (2008)
 - GFP-BH1 BORE HOLE (2008)
 - TP200 TEST PIT (2007)

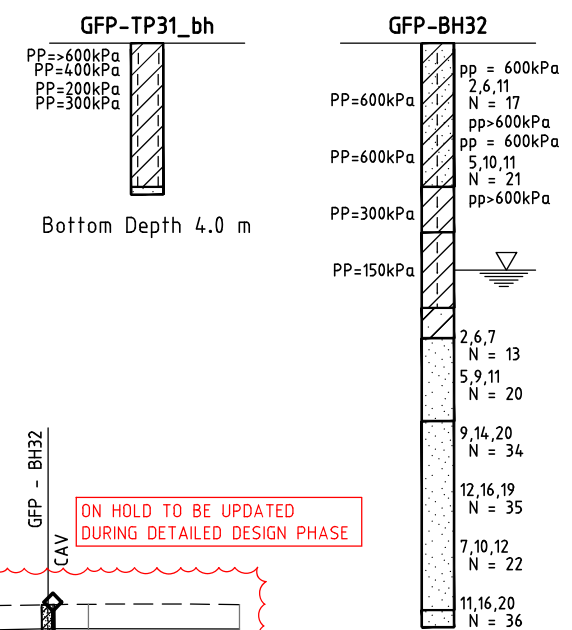
- LEGEND**
- Sand
 - Silty Clay
 - Sandy Clay

PLANS AND DOCUMENTS
 referred to in the
SDA APPROVAL

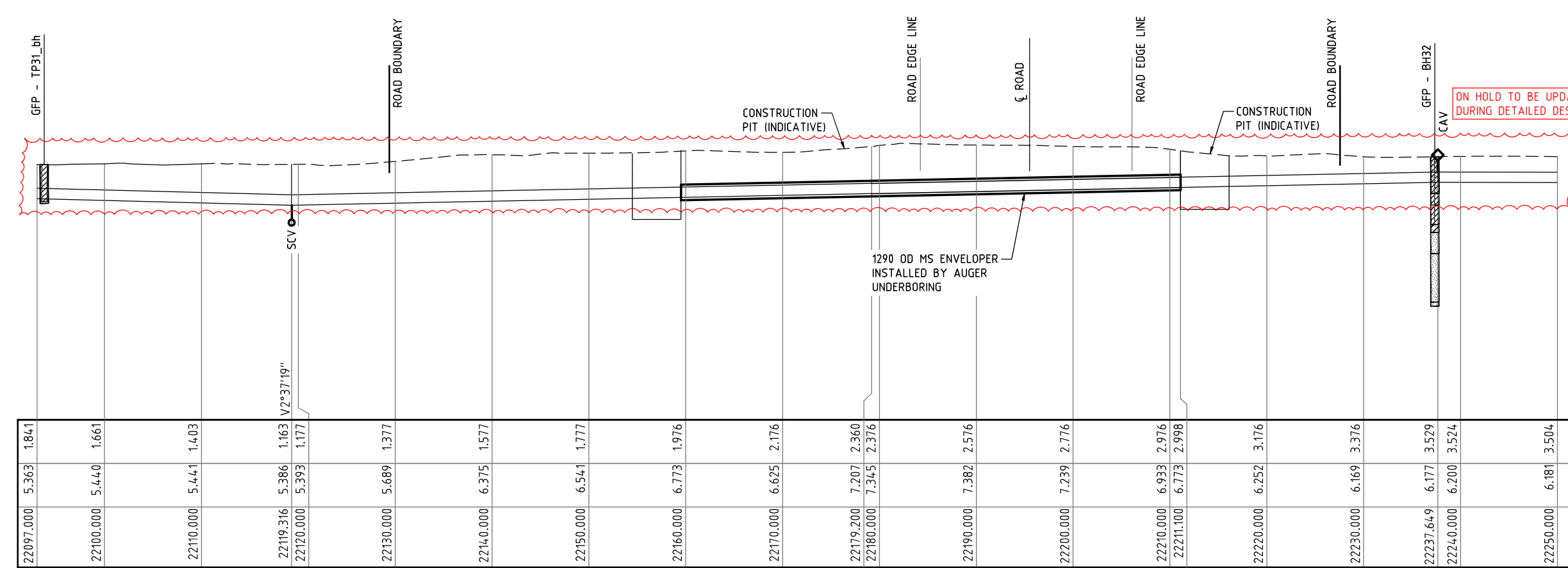
 SDA approval: AP2022/018



PLAN
SCALE 1:250



BOREHOLE DETAILS
SCALE 1:200



LONGITUDINAL SECTION
SCALE 1:250

DATUM R.L. -21.00
PIPE INVERT
SURFACE LEVEL
CHAINAGE

22097.000	1.841	5.363	22100.000	1.661	5.440	22110.000	1.403	5.441	22119.316	1.163	5.386	22120.000	1.177	5.393	22130.000	1.377	5.689	22140.000	1.577	6.375	22150.000	1.777	6.541	22160.000	1.976	6.773	22170.000	2.176	6.625	22179.200	2.360	7.207	22180.000	2.376	7.345	22190.000	2.576	7.382	22200.000	2.776	7.239	22210.000	2.976	6.933	22211.100	2.998	6.773	22220.000	3.176	6.252	22230.000	3.376	6.169	22237.649	3.529	6.177	22240.000	3.524	6.200	22250.000	3.504	6.181
-----------	-------	-------	-----------	-------	-------	-----------	-------	-------	-----------	-------	-------	-----------	-------	-------	-----------	-------	-------	-----------	-------	-------	-----------	-------	-------	-----------	-------	-------	-----------	-------	-------	-----------	-------	-------	-----------	-------	-------	-----------	-------	-------	-----------	-------	-------	-----------	-------	-------	-----------	-------	-------	-----------	-------	-------	-----------	-------	-------	-----------	-------	-------	-----------	-------	-------	-----------	-------	-------

NOTE
1. FOR SMEC'S DISCLAIMER REFER DRAWING 30032687-DWG-32000-G-0112

NOT FOR CONSTRUCTION

DRAWING FILE LOCATION / NAME V:_Vault\Projects\3003\30032687\GFP-DE Project\110_CADD\CAD\DWG\0130 GL\34100 ALTON DOWNS TO RAGLAN PIPELINE\30032687-DWG-34100-U-4191.dwg		PLOT DATE 21 Nov 2022		TIME 15:19:44											
EXTERNAL REFERENCE FILES X:\CONTOURS_CORRIDOR X:\30032687_SHEC_A1 X:\30032687_GFP_Alignment_2022 X:\JCD		REV		DATE		AMENDMENT / REVISION DESCRIPTION		WVR No.		APPROVAL		TITLE		NAME	
		A		20.08.21		30% CONCEPT DESIGN		006		MSL		DRAFTER		SUCHITHR	
		B		14.01.22		CONCEPT DESIGN-ECI PHASE		006		MSL		DRAFTING CHECK		DILIP.MG	
		C		20.09.22		OPTIMISED CONCEPT DESIGN		035		DT		DESIGNER		B.BEALING	
		D		18.11.22		UPDATED RIGHT OF WAY		037		MSL		DESIGN CHECK		M.SERRANO LOPEZ	
												PROJECT MANAGER		M.SERRANO LOPEZ	
												PROJECT DIRECTOR		D.TAYLOR	

SCALES AT A1 SIZE DRAWING

SCALE 1:250

SCALE 1:200

Member of the Surbana Jurong Group
© ABN 47 065 475 149
LEVEL 6, 480 ST PAULS TERRACE
FORTITUDE VALLEY QLD 4006
SMEC PROJECT No 30032687

CLIENT

PROJECT TITLE
FITZROY TO GLADSTONE PIPELINE PROJECT
30GLA - ALTON DOWNS TO RAGLAN PIPELINE
PLAN AND LONGITUDINAL SECTION
CAPRICORN HIGHWAY CROSSING
SHEET 3

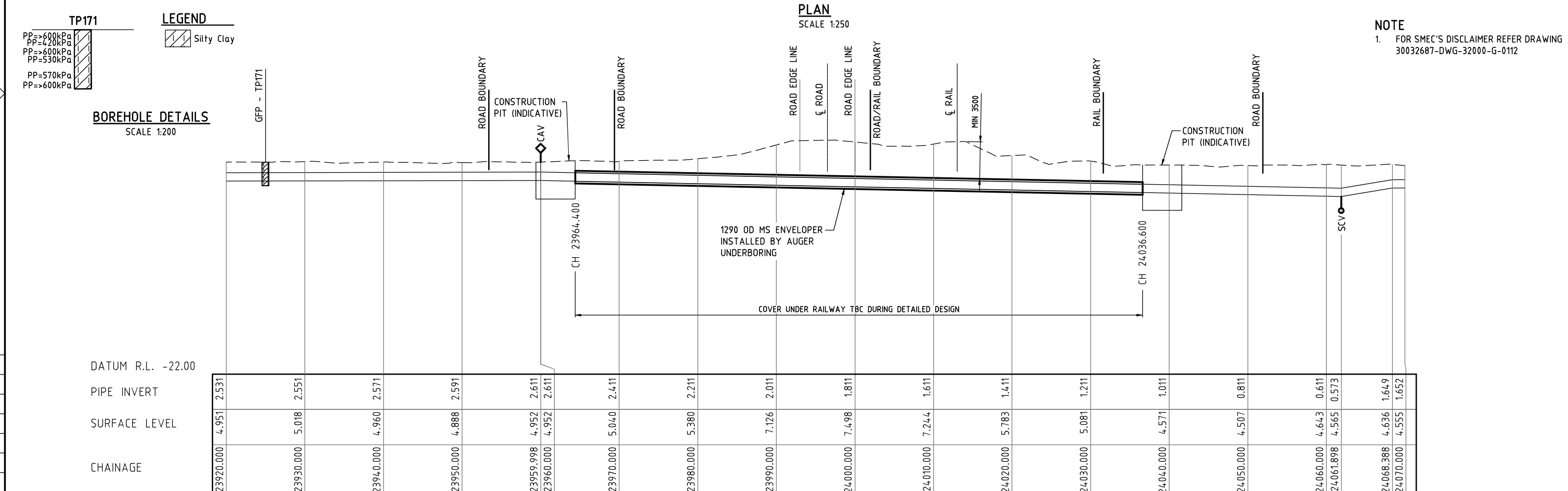
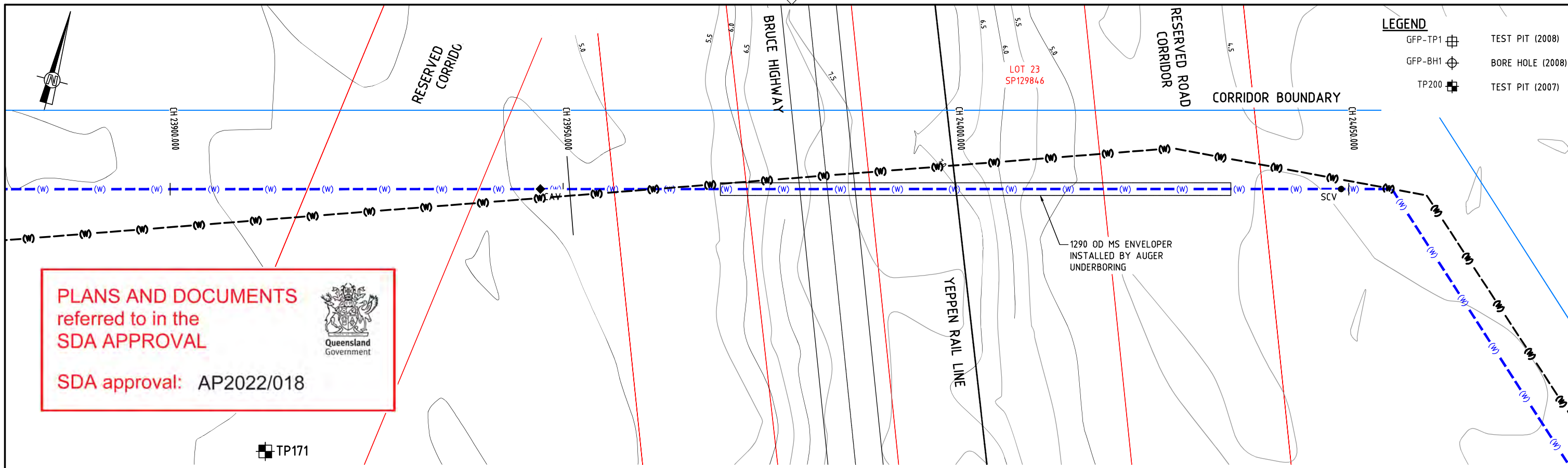
SCALE: CONCEPT DESIGN

PHASE: CONCEPT DESIGN

PROJECT / DRAWING No: 30032687-DWG-34100-U-4191

REVISION: D

150 mm ON ORIGINAL



150 mm ON ORIGINAL

DRAWING FILE LOCATION / NAME V:_Vault\Projects\3003\30032687\GFP-DE Project\110_CADD\CAD\DWG\0130 GL\34100 ALTON DOWNS TO RAGLAN PIPELINE\30032687-DWG-34100-U-4192.dwg		DATE 21 Nov 2022	TIME 15:20:18				
EXTERNAL REFERENCE FILES X_ASSUMED_DCB X_CONTOURS_CORRIDOR X_30032687_SHEC_A1 X_ASSUMED_PIPE_CONTROL X_30032687_GFP_Alignment	REV	DATE	AMENDMENT / REVISION DESCRIPTION	WVR No.	APPROVAL	TITLE	NAME
	A	20.08.21	30% CONCEPT DESIGN	006	MSL	DRAFTER	SUCHITHR
	B	14.01.22	CONCEPT DESIGN-ECI PHASE	006	MSL	DRAFTING CHECK	DILIP.MG
	C	23.08.22	OPTIMISED CONCEPT DESIGN	032	DT	DESIGNER	B.BEALING
	D	18.11.22	UPDATED RIGHT OF WAY	037	MSL	DESIGN CHECK	M.SERRANO LOPEZ
						PROJECT MANAGER	M.SERRANO LOPEZ
						PROJECT DIRECTOR	D.TAYLOR

SCALES AT A1 SIZE DRAWING

SCALE 1:250

SCALE 1:200

NOT FOR CONSTRUCTION

Member of the Surlana Jurong Group
© ABN 47 065 475 149

LEVEL 6, 480 ST PAULS TERRACE
FORTITUDE VALLEY QLD 4008
SMEC PROJECT No 30032687

CLIENT

Gladstone Area Water Board


PROJECT TITLE
FITZROY TO GLADSTONE PIPELINE PROJECT
30GLA - ALTON DOWNS TO RAGLAN PIPELINE
PLAN AND LONGITUDINAL SECTION
BRUCE HIGHWAY / YEPPEN RAIL LINE CROSSING
SHEET 4

SCALE	PHASE CONCEPT DESIGN	PROJECT / DRAWING No. 30032687-DWG-34100-U-4192	REVISION D
-------	-------------------------	--	---------------

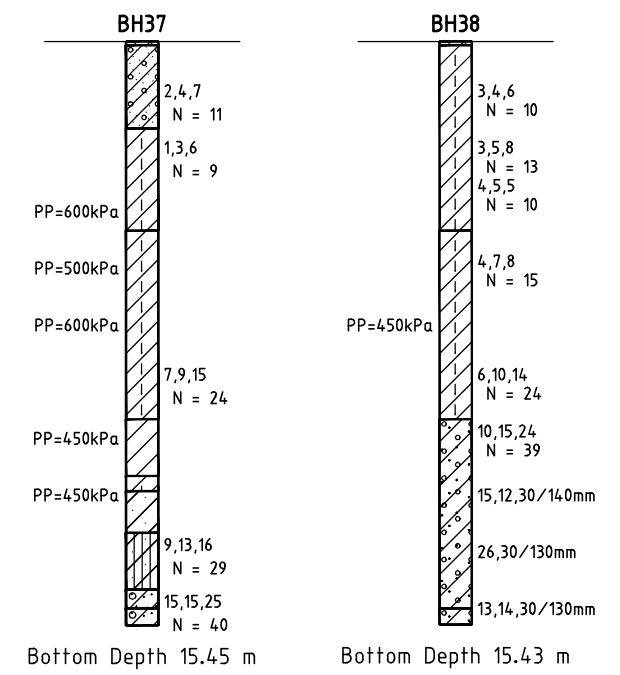
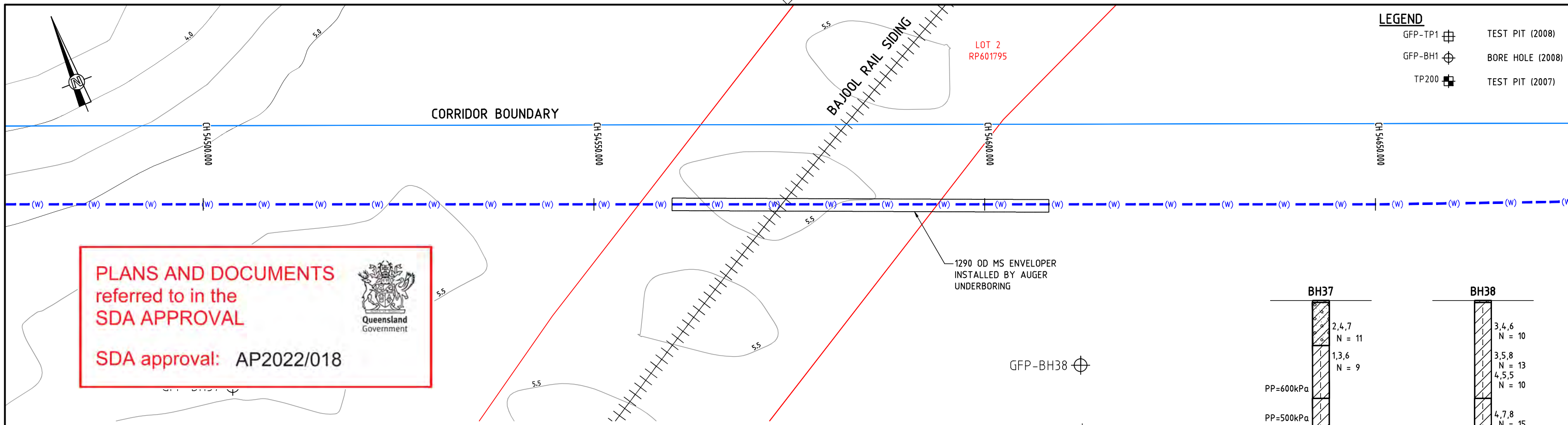
LEGEND

GFP-TP1		TEST PIT (2008)
GFP-BH1		BORE HOLE (2008)
TP200		TEST PIT (2007)

PLANS AND DOCUMENTS
referred to in the
SDA APPROVAL

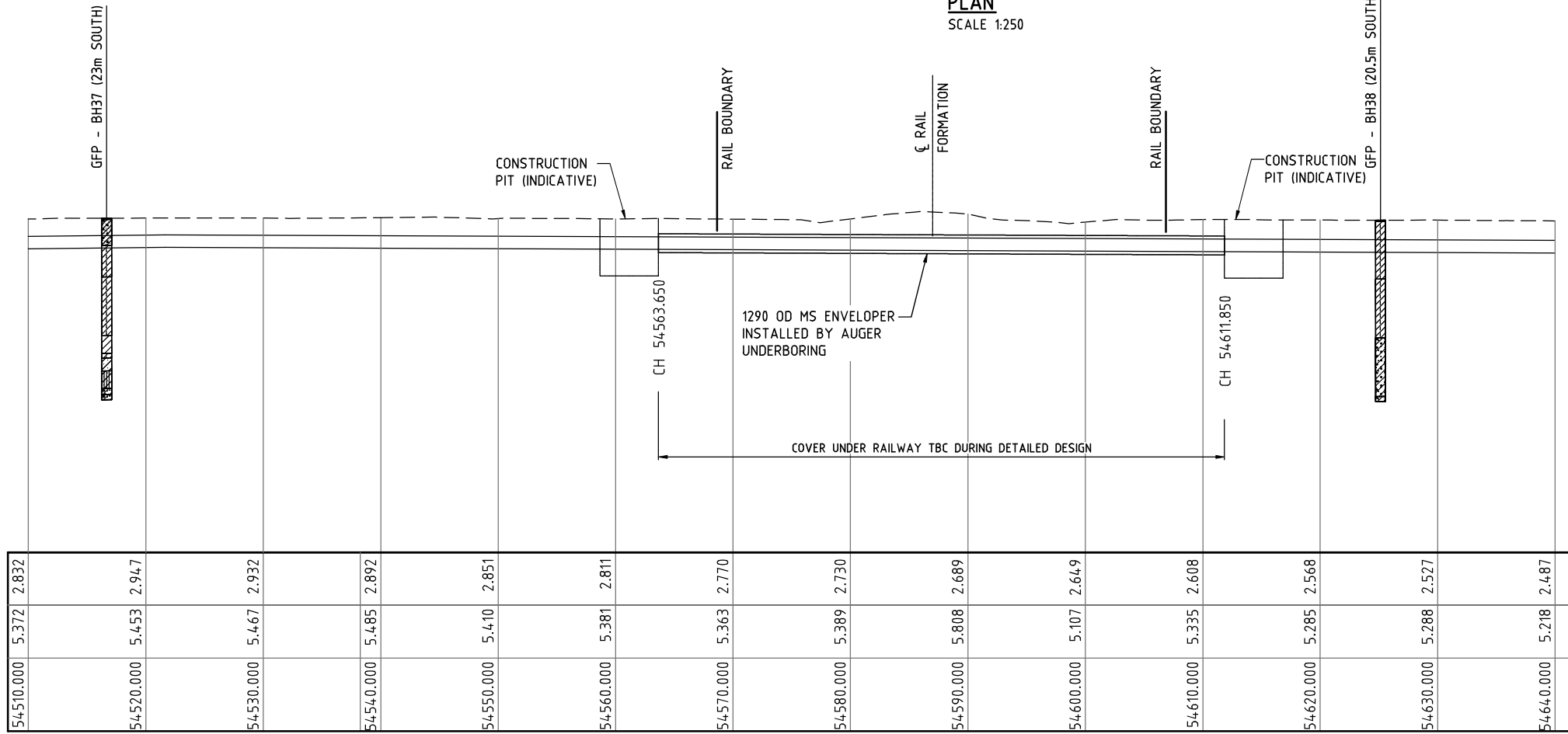


SDA approval: AP2022/018



LEGEND

	Silty Clay
	Silt
	Gravel Sandy
	Clay

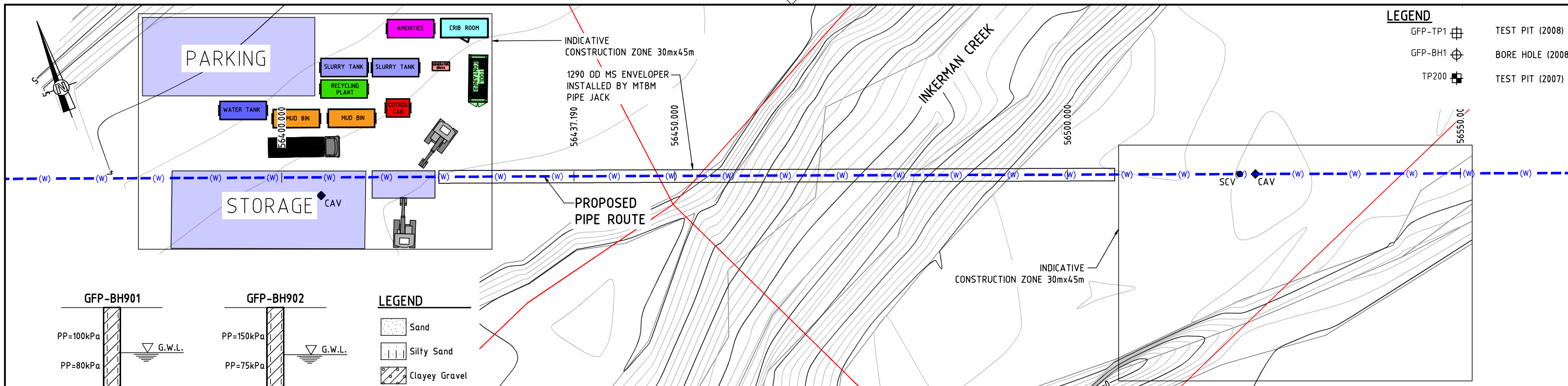


NOTE
1. FOR SMEC'S DISCLAIMER REFER DRAWING 30032687-DWG-32000-G-0112

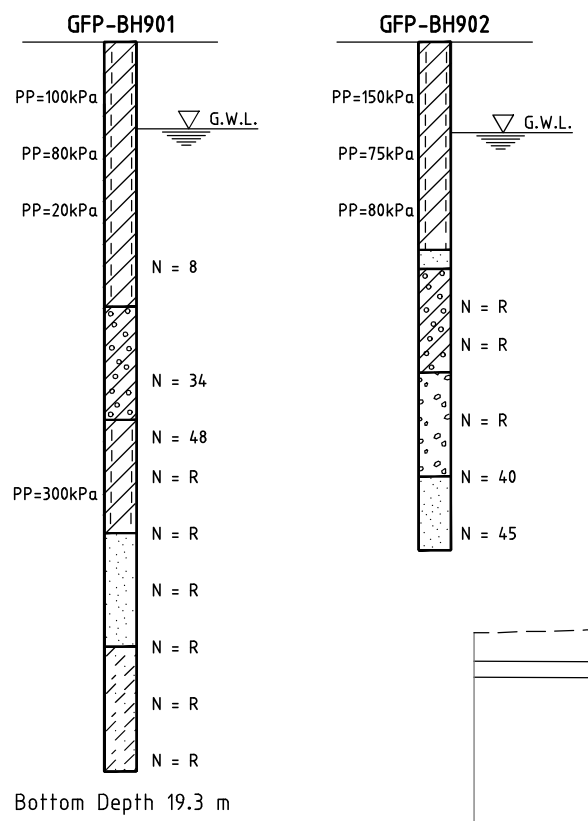
NOT FOR CONSTRUCTION

150 mm ON ORIGINAL
A1

DRAWING FILE LOCATION / NAME V:_Vault\Projects\3003\30032687\GFP-DE Project\110_CADD\CAD\DWG\0130 GL\34100 ALTON DOWNS TO RAGLAN PIPELINE\30032687-DWG-34100-U-4193.dwg		PLOT DATE 21 Nov 2022	TIME 15:20:50				
EXTERNAL REFERENCE FILES X_ASSUMED_DCB X_CONTOURS_CORRIDOR X_30032687_SHEE_A1 X_ASSUMED_PIPE_CONTROL	REV	DATE	AMENDMENT / REVISION DESCRIPTION	WVR No.	APPROVAL	TITLE	NAME
	A	20.08.21	30% CONCEPT DESIGN	006	MSL	DRAFTER	SUCHITHR
	B	14.01.22	CONCEPT DESIGN-ECI PHASE	006	MSL	DRAFTING CHECK	DILIP.MG
	C	30.06.22	OPTIMISED CONCEPT DESIGN	032	DT	DESIGNER	B.BEALING
	D	18.11.22	UPDATED RIGHT OF WAY	037	MSL	DESIGN CHECK	M.SERRANO LOPEZ
						PROJECT MANAGER	M.SERRANO LOPEZ
						PROJECT DIRECTOR	D.TAYLOR
SCALES AT A1 SIZE DRAWING		DESIGNER		CLIENT		PROJECT TITLE	
SCALE 1:250		SMEC Member of the Surbana Jurong Group © ABN 47 065 475 149 LEVEL 6, 480 ST PAULS TERRACE FORTITUDE VALLEY QLD 4006 SMEC PROJECT No 30032687		Gladstone Area Water Board		FITZROY TO GLADSTONE PIPELINE PROJECT 30GLA - ALTON DOWNS TO RAGLAN PIPELINE PLAN AND LONGITUDINAL SECTION BAJOL RAIL CROSSING SHEET 5	
SCALE	PHASE	PROJECT / DRAWING No.	REVISION				
	CONCEPT DESIGN	30032687-DWG-34100-U-4193	D				

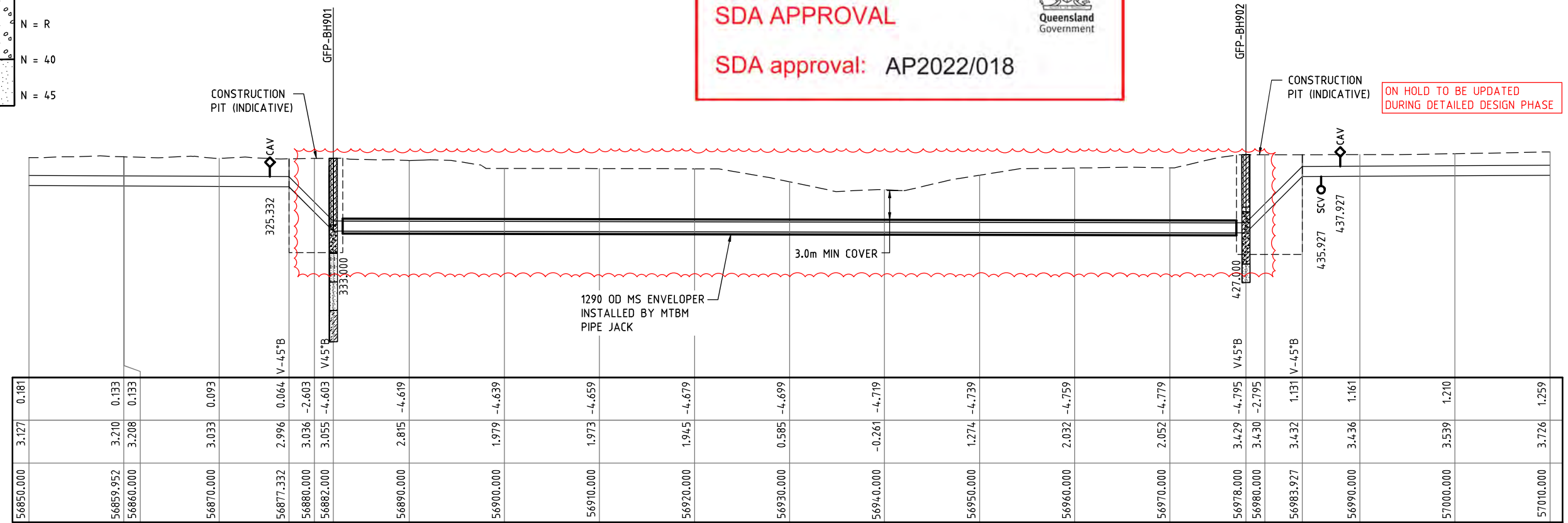


- LEGEND**
- GFP-TP1 TEST PIT (2008)
 - GFP-BH1 BORE HOLE (2008)
 - TP200 TEST PIT (2007)



- LEGEND**
- Sand
 - Silty Sand
 - Clayey Gravel
 - Silty Clay
 - Clayey Sand
 - Gravel

PLANS AND DOCUMENTS referred to in the SDA APPROVAL
 SDA approval: AP2022/018



DATUM R.L. -20.00

PIPE INVERT

SURFACE LEVEL

CHAINAGE

CHAINAGE	0.181	0.133	0.133	0.093	0.064	-2.603	-4.603	-4.619	-4.639	-4.659	-4.679	-4.699	-4.719	-4.739	-4.759	-4.779	-4.795	-2.795	1.131	1.161	1.210	1.259
56850.000	56859.952	56860.000	56870.000	56877.332	56880.000	56882.000	56890.000	56900.000	56910.000	56920.000	56930.000	56940.000	56950.000	56960.000	56970.000	56978.000	56980.000	56983.927	56990.000	57000.000	5710.000	5710.000
3.127	3.210	3.208	3.033	2.996	3.036	3.055	2.815	1.979	1.973	1.945	0.585	-0.261	1.274	2.032	2.052	3.429	3.430	3.432	3.436	3.539	3.726	3.726

NOTE
 1. FOR SMEC'S DISCLAIMER REFER DRAWING 30032687-DWG-32000-G-0112

NOT FOR CONSTRUCTION

150 mm ON ORIGINAL

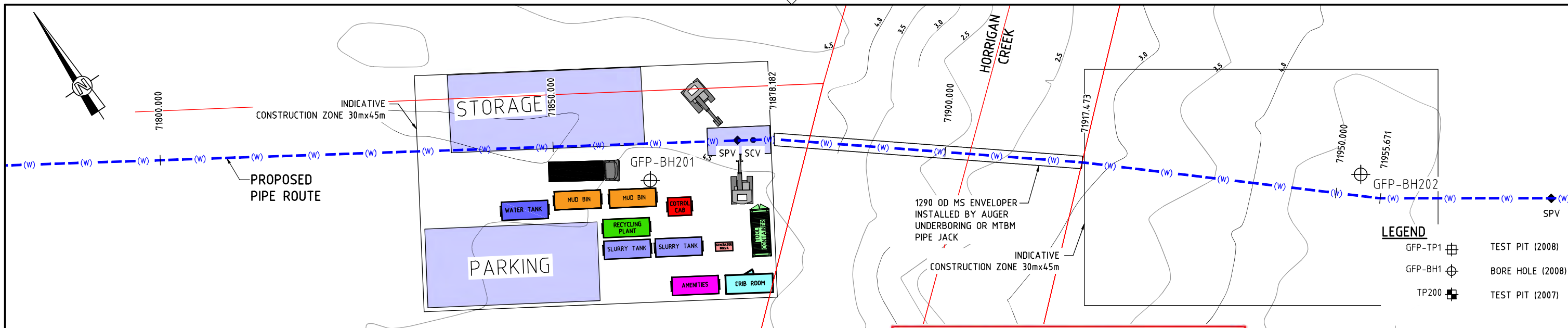
DRAWING FILE LOCATION / NAME V:_Vault\Projects\3003\30032687-GFP-DE Project\110_CADD\CAD\DWG\0130 GL\34100 ALTON DOWNS TO RAGLAN PIPELINE\30032687-DWG-34100-U-4194.dwg		REV	DATE	AMENDMENT / REVISION DESCRIPTION	WVR No.	APPROVAL	TITLE	NAME
EXTERNAL REFERENCE FILES X:\Inkerman_Crossin X:\Inkerman_CK_SURVEY X:\30032687_SHEC_A1 X:\DCD X:\30032687_GFP_Alignment_2022 X:\ASSIGNED_PIPE_CONTR.		A	20.08.21	30% CONCEPT DESIGN	006	MSL	DRAFTER	SUCHITH.R
		B	14.01.22	CONCEPT DESIGN-ECI PHASE	006	MSL	DRAFTING CHECK	DILIP.MG
		C	19.09.22	OPTIMISED CONCEPT DESIGN	034	DT	DESIGNER	B.BEALING
		D	18.11.22	UPDATED RIGHT OF WAY	037	MSL	DESIGN CHECK	M.SERRANO LOPEZ
							PROJECT MANAGER	M.SERRANO LOPEZ
							PROJECT DIRECTOR	D.TAYLOR

SCALE AT A1 SIZE DRAWING	SCALE 1:250	SCALE 1:200
--------------------------	-------------	-------------

DESIGNER	SMEC Member of the Surlana Jurong Group © ABN 47 065 475 149 LEVEL 6, 480 ST PAULS TERRACE FORTITUDE VALLEY QLD 4006 SMEC PROJECT No 30032687
----------	---

CLIENT	Gladstone Area Water Board
--------	-----------------------------------

PROJECT TITLE	FITZROY TO GLADSTONE PIPELINE PROJECT 30GLA - ALTON DOWNS TO RAGLAN PIPELINE PLAN AND LONGITUDINAL SECTION INKERMAN CREEK CROSSIN SHEET 6
SCALE	PHASE CONCEPT DESIGN
PROJECT / DRAWING No.	30032687-DWG-34100-U-4194
REVISION	D

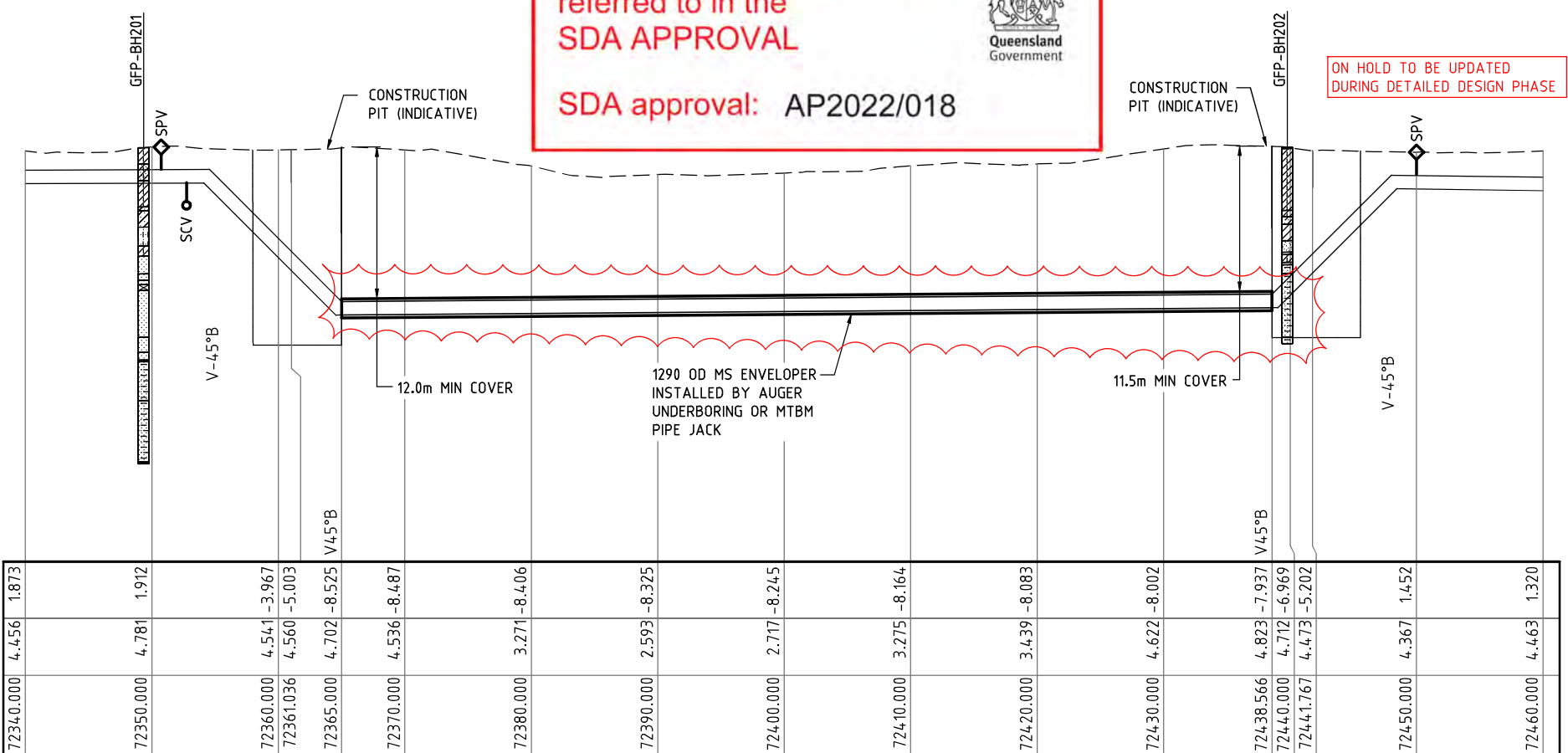
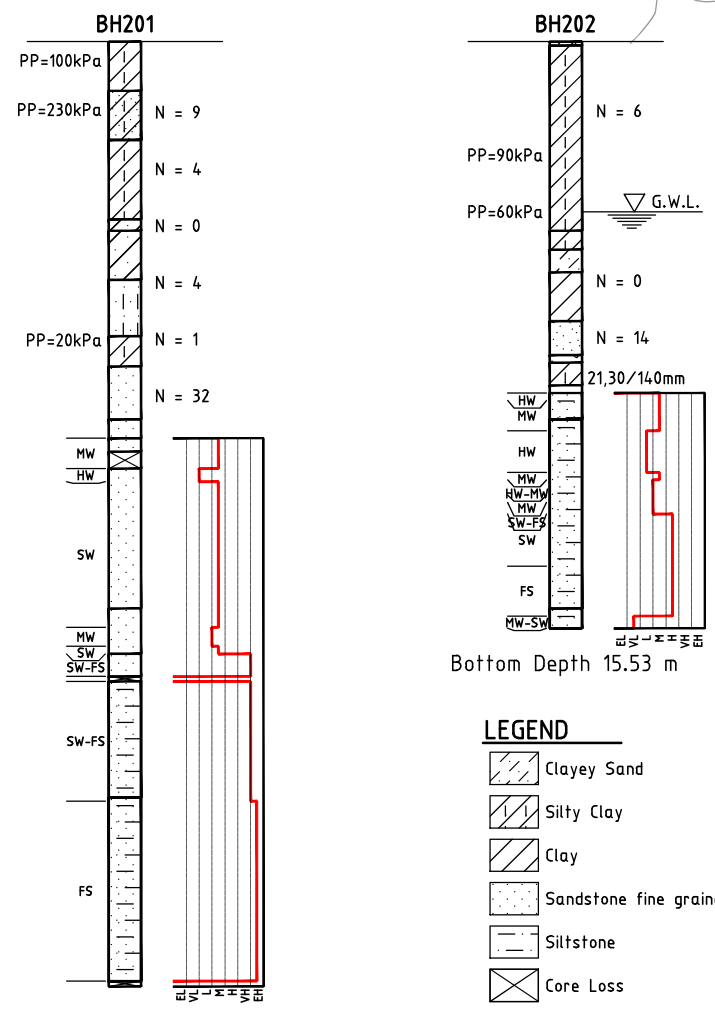


PLANS AND DOCUMENTS referred to in the SDA APPROVAL

Queensland Government

SDA approval: AP2022/018

ON HOLD TO BE UPDATED DURING DETAILED DESIGN PHASE



150 mm ON ORIGINAL

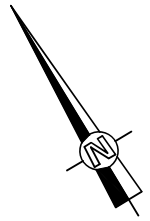
A1

NOTE

1. FOR SMEC'S DISCLAIMER REFER DRAWING 30032687-DWG-32000-G-0112


NOT FOR CONSTRUCTION

DRAWING FILE LOCATION / NAME V:_Vault\Projects\3003\30032687-GFP-DE Project\110_CADD\CAD\DWG\0130 GL\34-100 ALTON DOWNS TO RAGLAN PIPELINE\30032687-DWG-34100-U-4195.dwg		PLOT DATE 21 Nov 2022	TIME 15:21:52
EXTERNAL REFERENCE FILES X:\CONTOURS_CORRIDOR X:\30032687_SHEC_A1 X:\ASSEMBLED_PIPE_CONTROL X:\DC08 X:\30032687_GFP_Alignment_2022	REV	DATE	AMENDMENT / REVISION DESCRIPTION
	A	20.08.21	30% CONCEPT DESIGN
	B	14.01.22	CONCEPT DESIGN-ECI PHASE
	C	19.09.22	OPTIMISED CONCEPT DESIGN
	D	18.11.22	UPDATED RIGHT OF WAY
	WVR No.	APPROVAL	TITLE
	006	MSL	DRAFTER <i>SUCHITHR</i>
	006	MSL	DRAFTING CHECK <i>DILIP.MG</i>
	034	DT	DESIGNER <i>B.BEALING</i>
	037	MSL	DESIGN CHECK <i>M.SERRANO LOPEZ</i>
			PROJECT MANAGER <i>M.SERRANO LOPEZ</i>
			PROJECT DIRECTOR <i>D.TAYLOR</i>
SCALES AT A1 SIZE DRAWING		DESIGNER	
SCALE 1:250		<p>Member of the Surlana Jurong Group © ABN 47 065 475 149</p>	
SCALE 1:200		CLIENT	
PROJECT TITLE FITZROY TO GLADSTONE PIPELINE PROJECT 30GLA - ALTON DOWNS TO RAGLAN PIPELINE PLAN AND LONGITUDINAL SECTION HORRIGAN CREEK CROSSING SHEET 7			
SCALE	PHASE	PROJECT / DRAWING No.	REVISION
	CONCEPT DESIGN	30032687-DWG-34100-U-4195	D

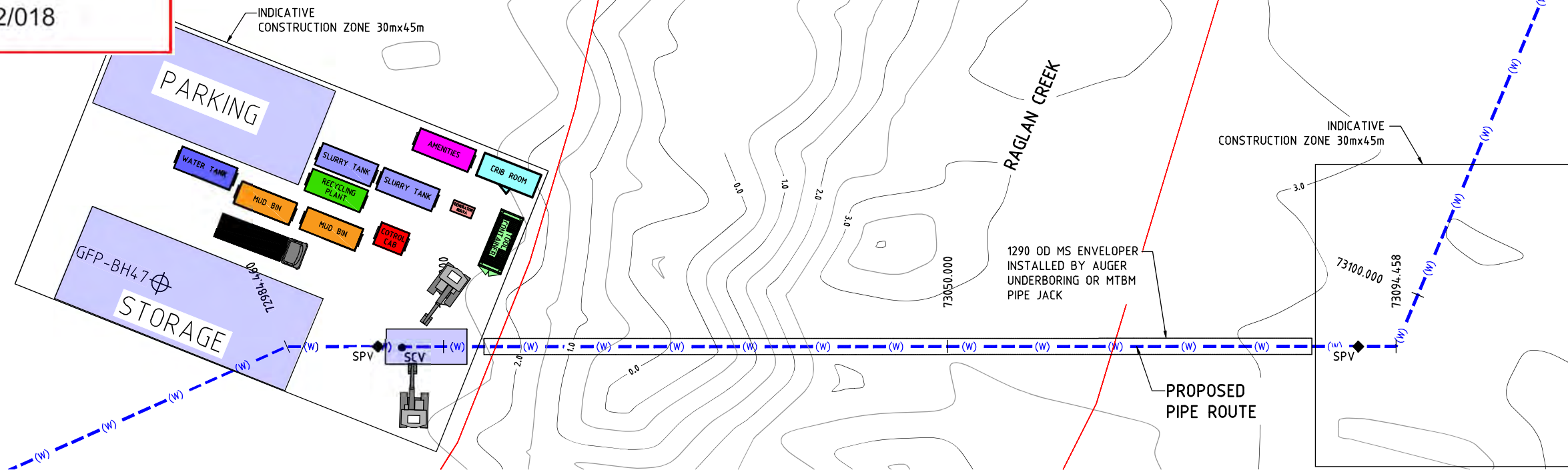


PLANS AND DOCUMENTS
referred to in the
SDA APPROVAL

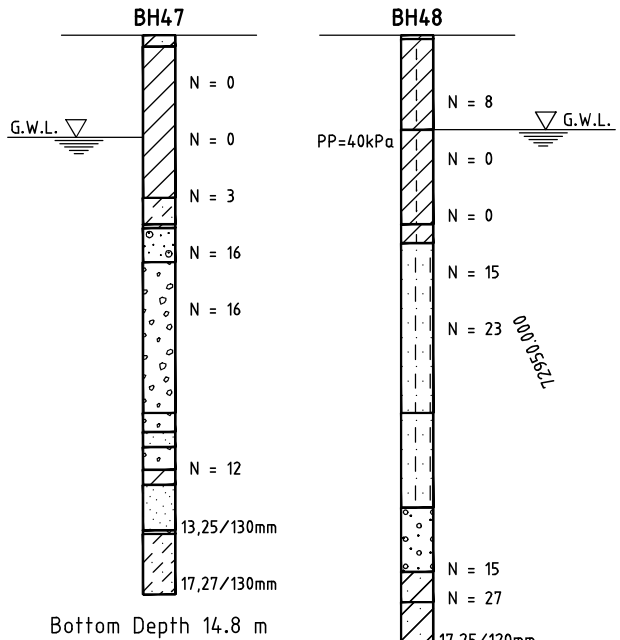
SDA approval: AP2022/018



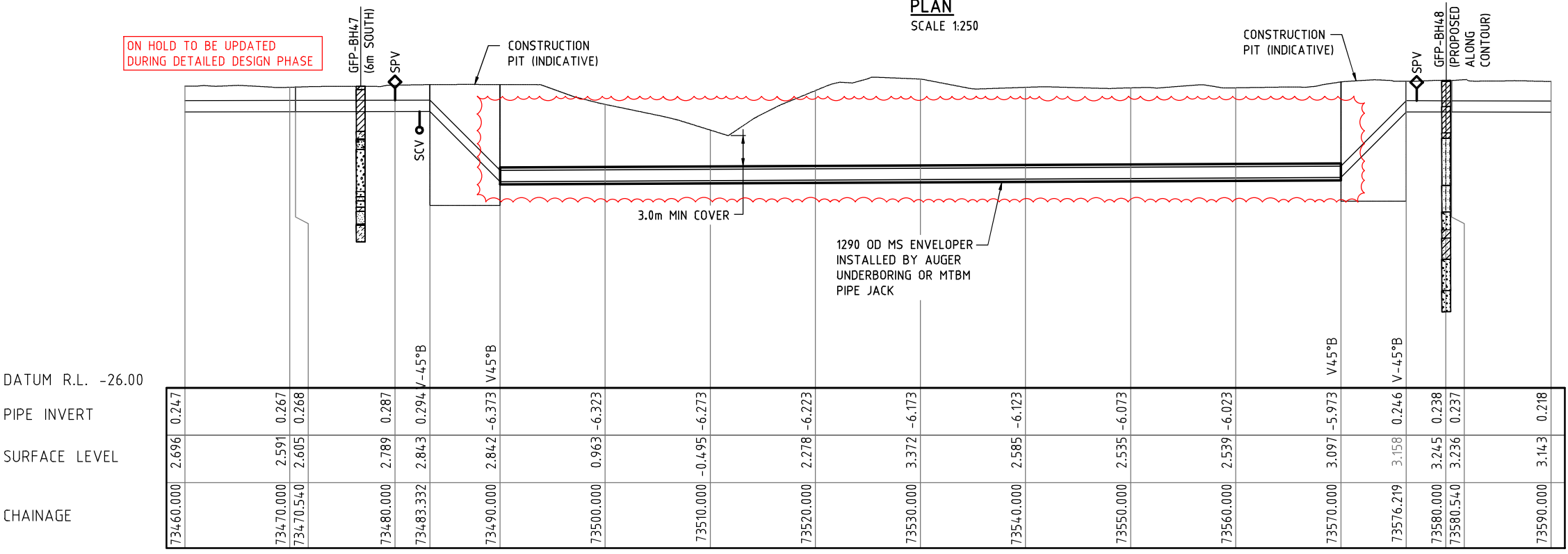
- LEGEND**
- GFP-TP1 TEST PIT (2008)
 - GFP-BH1 BORE HOLE (2008)
 - TP200 TEST PIT (2007)



PLAN
SCALE 1:250



BOREHOLE DETAILS
SCALE 1:200



LONGITUDINAL SECTION
SCALE 1:250

NOTE
1. FOR SMEC'S DISCLAIMER REFER DRAWING 30032687-DWG-32000-G-0112

NOT FOR CONSTRUCTION

150 mm ON ORIGINAL

DRAWING FILE LOCATION / NAME V:_Vault\Projects\3003\30032687\GFP-DE Project\110_CADD\CAD\DWG\0130 GL\34100 ALTON DOWNS TO RAGLAN PIPELINE\30032687-DWG-34100-U-4196.dwg		PLOT DATE 21 Nov 2022	TIME 15:22:24
EXTERNAL REFERENCE FILES X:\CONTOURS_CORRIDOR X:\3032654_SHEC_A1 X:\SCIB X:\3032687_GFP_Alignment_2022	REV A B C D	DATE 20.08.21 14.01.22 19.09.22 18.11.22	AMENDMENT / REVISION DESCRIPTION 30% CONCEPT DESIGN CONCEPT DESIGN-ECI PHASE OPTIMISED CONCEPT DESIGN UPDATED RIGHT OF WAY
	WVR No. 006 034 037	APPROVAL MSL DT MSL	TITLE DRAFTER DRAFTING CHECK DESIGNER DESIGN CHECK PROJECT MANAGER PROJECT DIRECTOR
			NAME SUCHITHR DILIP.MG B.BEALING M.SERRANO LOPEZ M.SERRANO LOPEZ D.TAYLOR

CHAINAGE	PIPE INVERT	SURFACE LEVEL
73460.000	0.247	2.696
73470.000	0.267	2.591
73470.540	0.268	2.605
73480.000	0.287	2.789
73483.332	0.294	2.843
73490.000	-6.373	2.842
73500.000	-6.323	0.963
73510.000	-6.273	-0.495
73520.000	-6.223	2.278
73530.000	-6.173	3.372
73540.000	-6.123	2.585
73550.000	-6.073	2.535
73560.000	-6.023	2.539
73570.000	-5.973	3.097
73576.219	0.246	3.158
73580.000	0.238	3.245
73580.540	0.237	3.236
73590.000	0.218	3.143

SCALES AT A1 SIZE DRAWING
SCALE 1:250
SCALE 1:200

DESIGNER



Member of the Surlana Jurong Group
© ABN 47 065 475 149

LEVEL 6, 480 ST PAULS TERRACE
FORTITUDE VALLEY QLD 4006
SMC PROJECT No 30032687

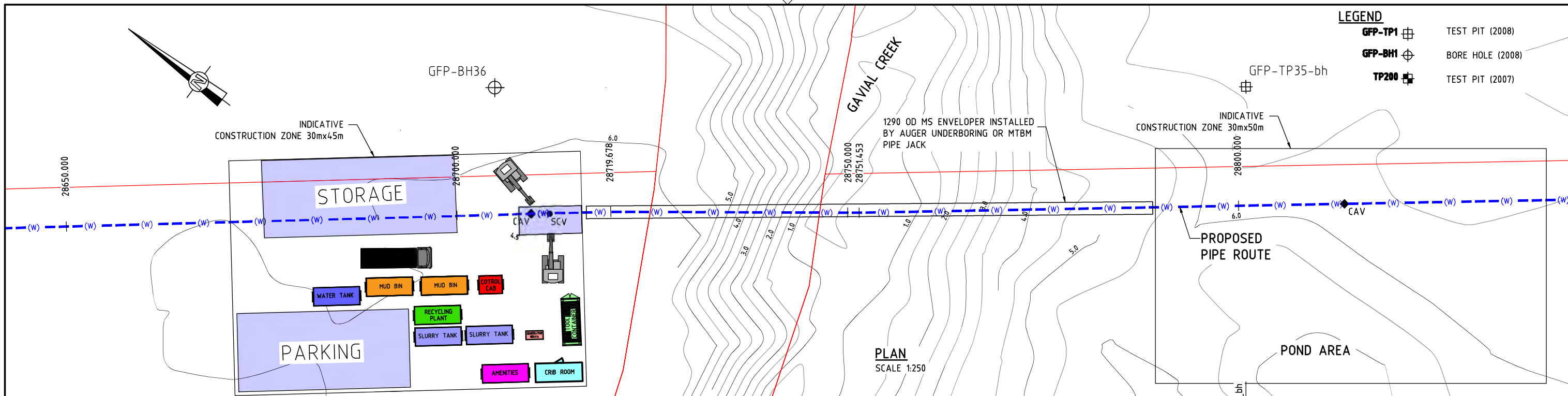
CLIENT



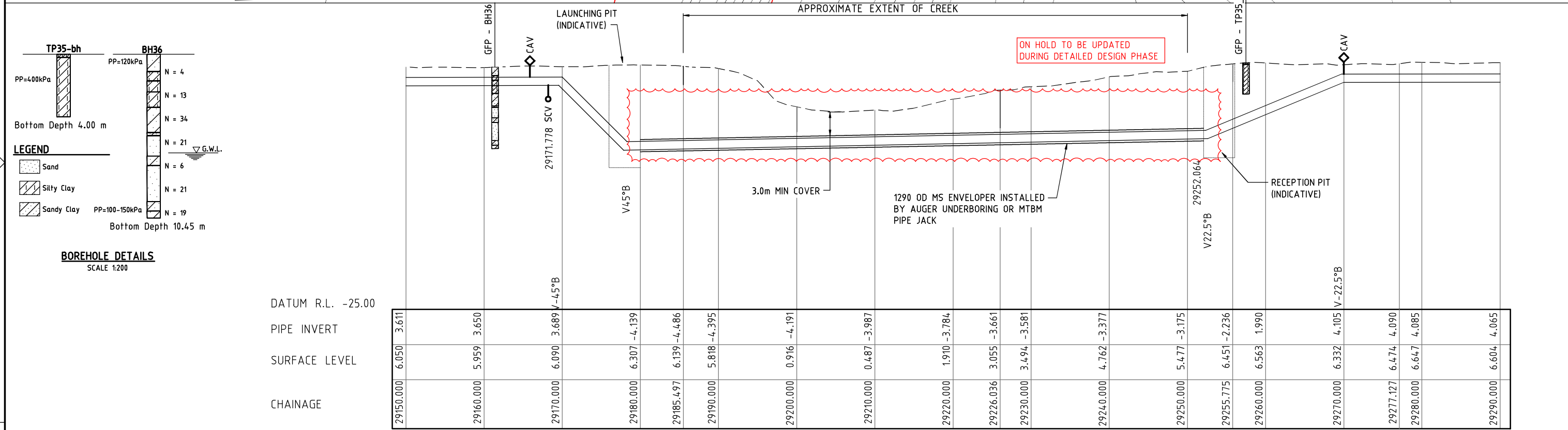
Gladstone Area
Water Board

PROJECT TITLE FITZROY TO GLADSTONE PIPELINE PROJECT 30GLA - ALTON DOWNS TO RAGLAN PIPELINE PLAN AND LONGITUDINAL SECTION RAGLAN CREEK CROSSING SHEET 8			
SCALE	PHASE CONCEPT DESIGN	PROJECT / DRAWING No. 30032687-DWG-34100-U-4196	REVISION D

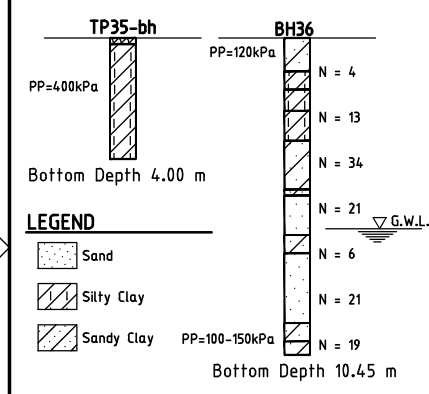
- LEGEND**
- GFP-TP1 TEST PIT (2008)
 - GFP-BH1 BORE HOLE (2008)
 - TP200 TEST PIT (2007)



PLAN
SCALE 1:250



LONGITUDINAL SECTION
SCALE 1:250



BOREHOLE DETAILS
SCALE 1:200

DATUM R.L. -25.00
PIPE INVERT
SURFACE LEVEL
CHAINAGE

PLANS AND DOCUMENTS referred to in the SDA APPROVAL

SDA approval: AP2022/018

NOTE
1. FOR SMEC'S DISCLAIMER REFER DRAWING 30032687-DWG-32000-G-0112

NOT FOR CONSTRUCTION

DRAWING FILE LOCATION / NAME V:_Vault\Projects\3003\30032687\GFP-DE Project\110_CADD\CAD\DWG\0130 GL\34100 ALTON DOWNS TO RAGLAN PIPELINE\30032687-DWG-34100-U-4197.dwg		PLOT DATE 21 Nov 2022	TIME 15:23:04					
EXTERNAL REFERENCE FILES X:\CONTOURS_CORRIDOR X:\SERVICES_DBYD_CORRIDOR X:\3182654_SHEC_A1 X:\ASSUMED_PIPE_CONTROL X:\DC08 X:\30032687_GFP_Alignment_2022		REV	DATE	AMENDMENT / REVISION DESCRIPTION	WVR No.	APPROVAL	TITLE	NAME
		A	20.08.21	30% CONCEPT DESIGN	006	MSL	DRAFTER	SUCHITHR
		B	14.01.22	CONCEPT DESIGN-ECI PHASE	006	MSL	DRAFTING CHECK	DILIP.MG
		C	19.09.22	OPTIMISED CONCEPT DESIGN	034	DT	DESIGNER	B.BEALING
		D	18.11.22	UPDATED RIGHT OF WAY	037	MSL	DESIGN CHECK	M.SERRANO LOPEZ
							PROJECT MANAGER	M.SERRANO LOPEZ
							PROJECT DIRECTOR	D.TAYLOR

SCALES AT A1 SIZE DRAWING

SCALE 1:250

SCALE 1:200

Member of the Surlana Jurong Group
© ABN 47 065 475 149

LEVEL 6, 480 ST PAULS TERRACE
FORTITUDE VALLEY QLD 4006
SMEC PROJECT No 30032687

CLIENT

PROJECT TITLE FITZROY TO GLADSTONE PIPELINE PROJECT 30GLA - ALTON DOWNS TO RAGLAN PIPELINE PLAN AND LONGITUDINAL SECTION GAVIAL CREEK CROSSING SHEET 9			
SCALE	PHASE CONCEPT DESIGN	PROJECT / DRAWING No. 30032687-DWG-34100-U-4197	REVISION D

150 mm ON ORIGINAL