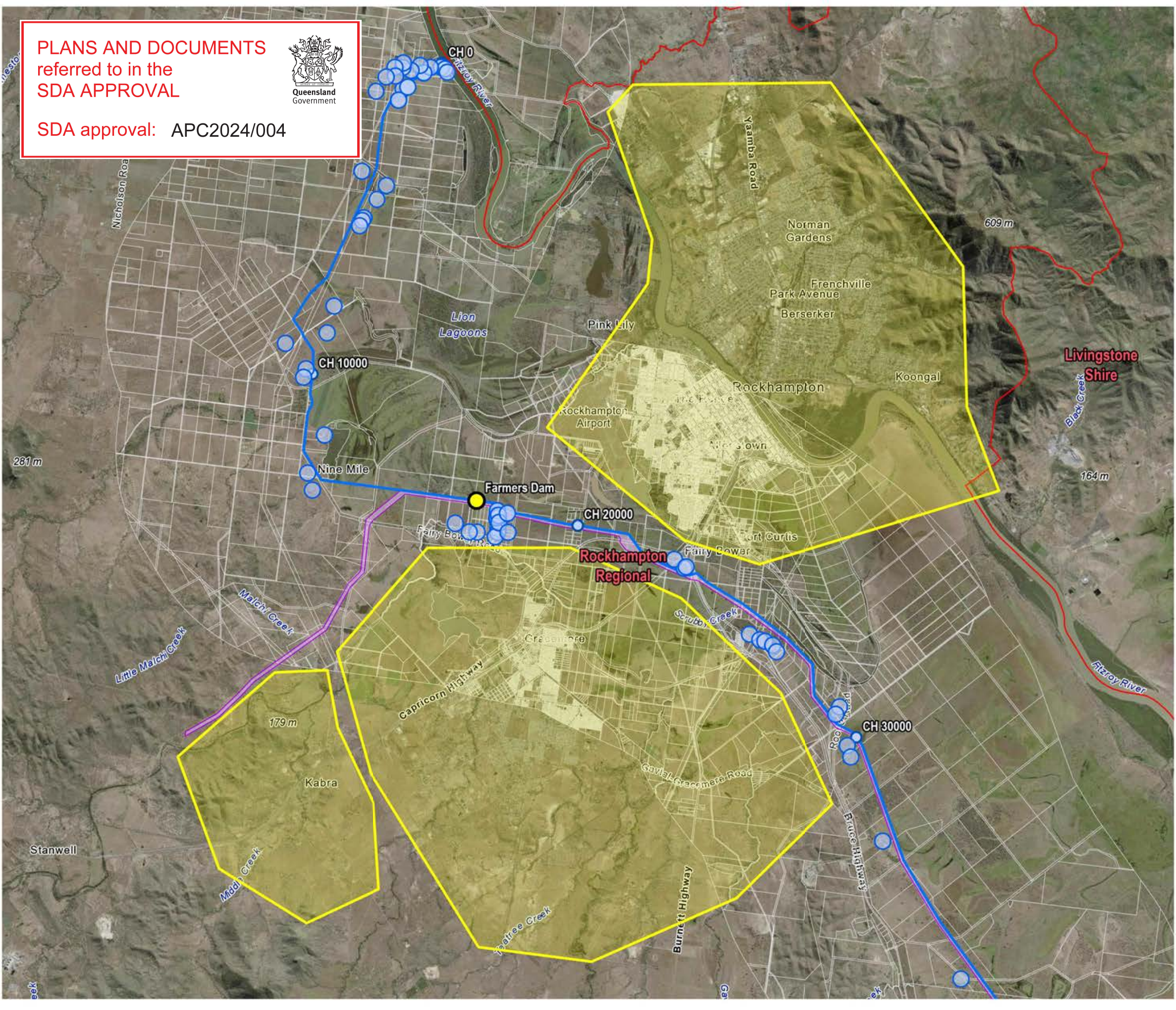


PLANS AND DOCUMENTS referred to in the SDA APPROVAL



SDA approval: APC2024/004



- LEGEND
- Pipeline Alignment (P2023_02_231019_Alignment)
 - Trenchless Crossings
 - Sensitive Receivers
 - Community Areas
 - Property Boundaries
 - Local Government Areas Boundaries
 - State Development Areas
 - Gladstone State Development Area
 - Stanwell to Gladstone Infrastructure Corridor State Development Area

SOURCE
Pipeline alignment, ROW areas and property boundaries from W3Plus
Aerial imagery from QLD Spatial. (Latest Available when Printed)

0 1,000 2,000 3,000 m

SCALE 1:100,000
PAGE SIZE: A3
PROJECTION: GDA2020 MGA Zone 56

GLADSTONE AREA WATER BOARD
FITZROY TO GLADSTONE PIPELINE


SENSITIVE RECEPTORS

Figure 2.1a FGP SGIC SDA Alignment and proposed 24-hour construction works



DATE: 15.01.24 FILE: 1151-DL00-MCD-XLP-MAP-0027 REV: B

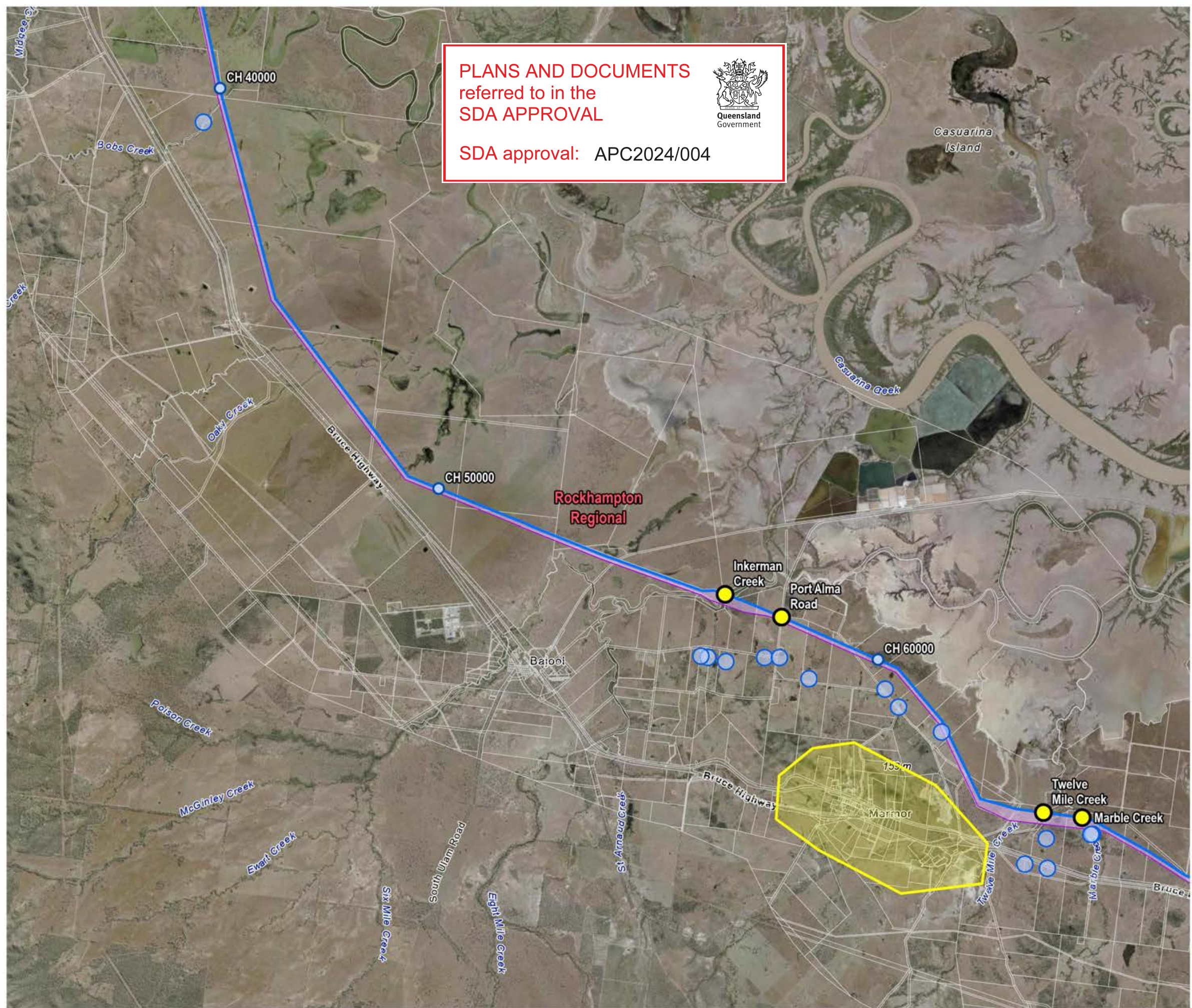
PLANS AND DOCUMENTS
referred to in the
SDA APPROVAL



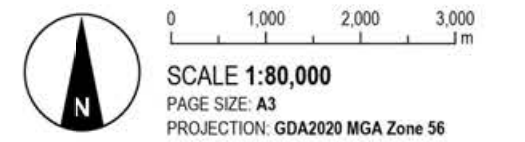
Queensland
Government

SDA approval: APC2024/004

- LEGEND**
-  Pipeline Alignment (P2023_02_231019_Alignment)
 -  Trenchless Crossings
 -  Sensitive Receivers
 -  Community Areas
 -  Property Boundaries
 -  Local Government Areas Boundaries
- State Development Areas**
-  Gladstone State Development Area
 -  Stanwell to Gladstone Infrastructure Corridor State Development Area



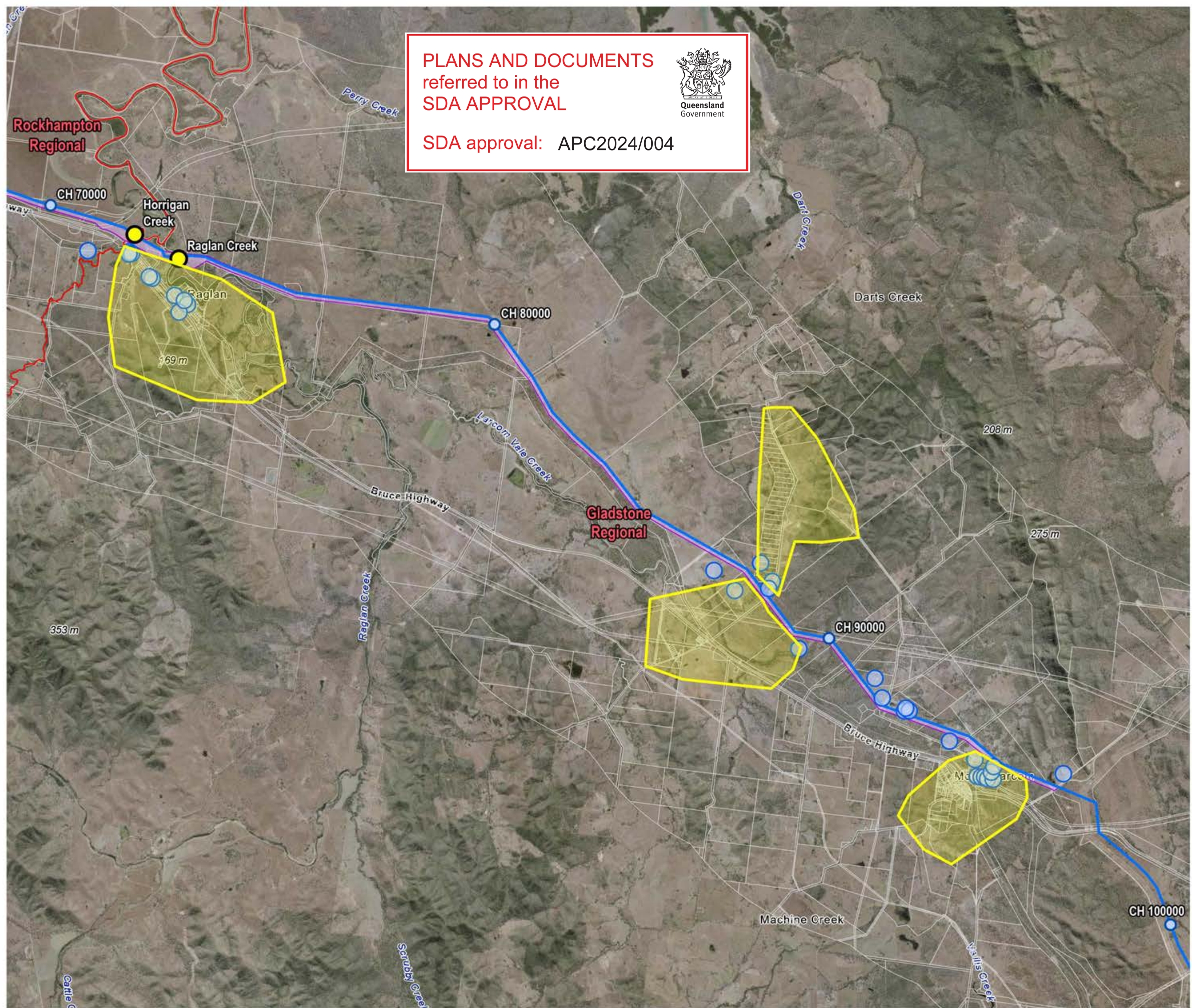
SOURCE
Pipeline alignment, ROW areas and property boundaries from W3Plus
Aerial imagery from QLD Spatial. (Latest Available when Printed)



GLADSTONE AREA WATER BOARD
FITZROY TO GLADSTONE PIPELINE


SENSITIVE RECEPTORS
Figure 2.1b FGP SGIC SDA Alignment and proposed 24-hour construction works







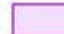




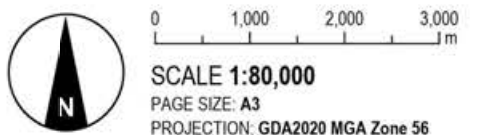
PLANS AND DOCUMENTS
referred to in the
SDA APPROVAL

SDA approval: APC2024/004



- LEGEND**
-  Pipeline Alignment (P2023_02_231019_Alignment)
 -  Trenchless Crossings
 -  Sensitive Receptors
 -  Community Areas
 -  Property Boundaries
 -  Local Government Areas Boundaries
 - State Development Areas**
 -  Gladstone State Development Area
 -  Stanwell to Gladstone Infrastructure Corridor State Development Area

SOURCE
Pipeline alignment, ROW areas and property boundaries from W3Plus
Aerial imagery from QLD Spatial. (Latest Available when Printed)

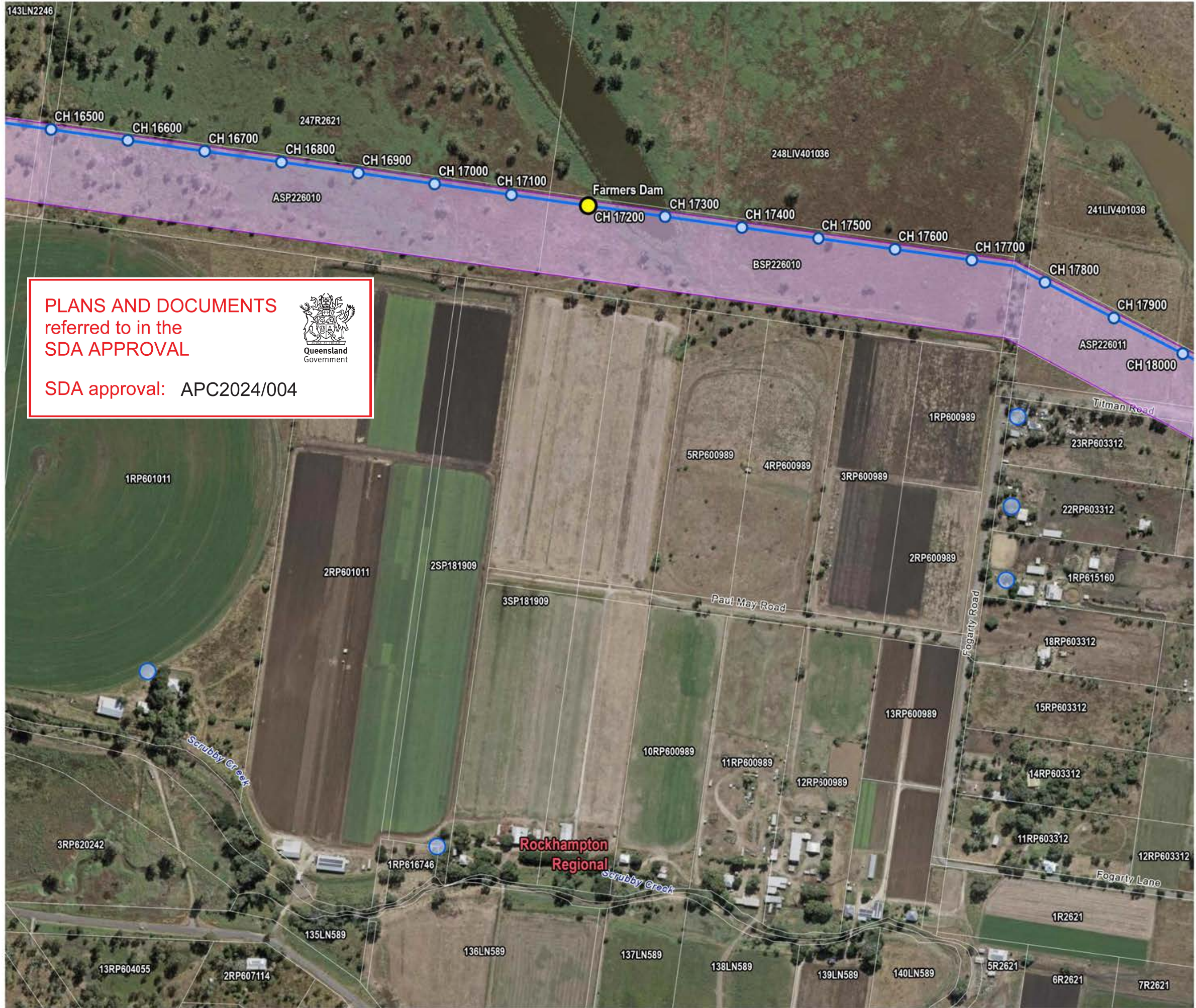


SCALE 1:80,000
PAGE SIZE: A3
PROJECTION: GDA2020 MGA Zone 56


GLADSTONE AREA WATER BOARD
FITZROY TO GLADSTONE PIPELINE

SENSITIVE RECEPTORS
Figure 2.1c FGP SGIC SDA Alignment and proposed 24-hour construction works








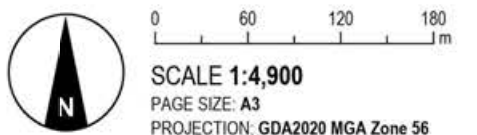
PLANS AND DOCUMENTS
referred to in the
SDA APPROVAL



SDA approval: APC2024/004

- LEGEND**
-  Pipeline Alignment (P2023_02_231019_Alignment)
 -  Trenchless Crossings
 -  Sensitive Receivers
 -  Community Areas
 -  Property Boundaries
 -  Local Government Areas Boundaries
 - State Development Areas**
 -  Gladstone State Development Area
 -  Stanwell to Gladstone Infrastructure Corridor State Development Area

SOURCE
Pipeline alignment, ROW areas and property boundaries from W3Plus Aerial imagery from QLD Spatial. (Latest Available when Printed)

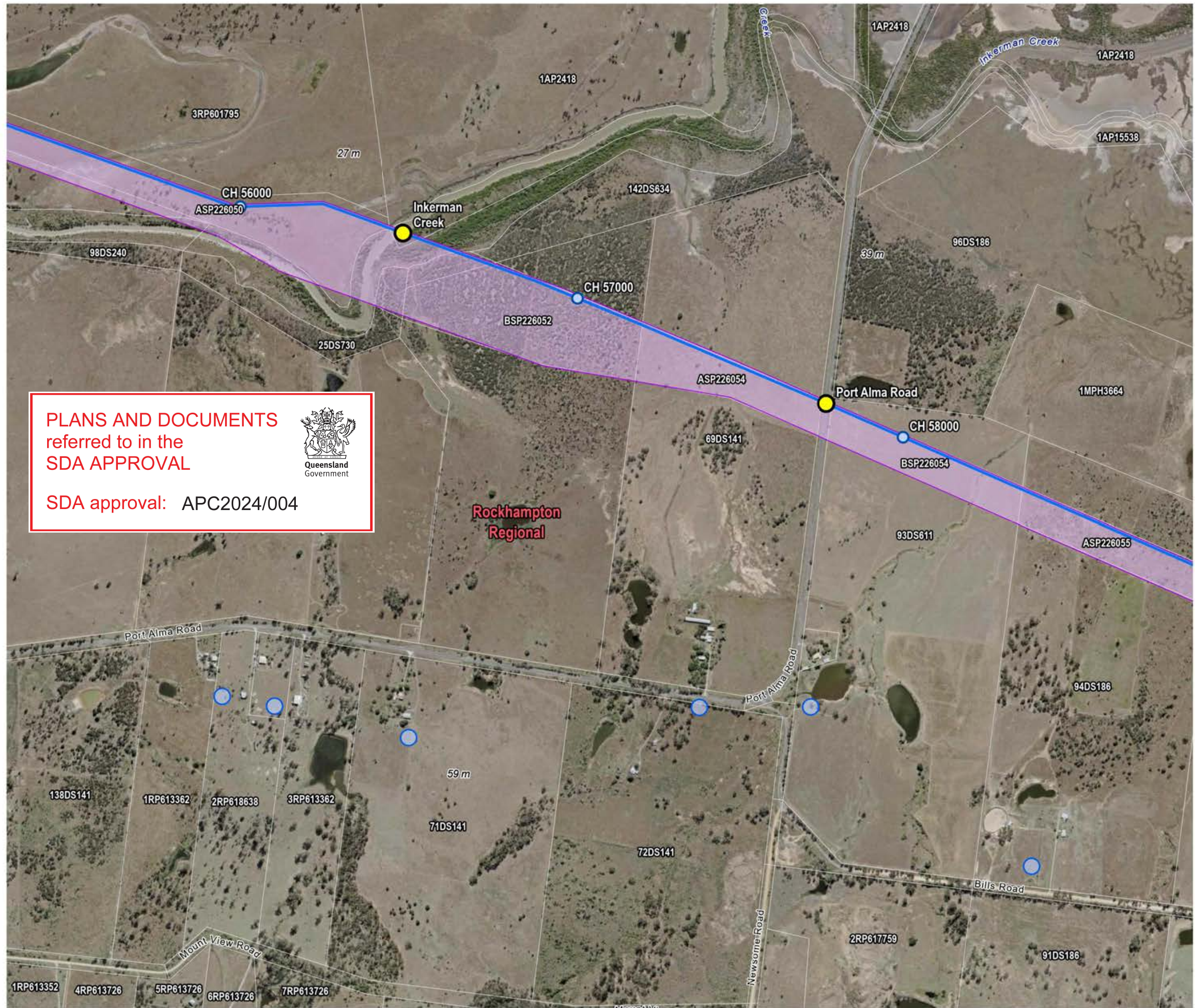


GLADSTONE AREA WATER BOARD
FITZROY TO GLADSTONE PIPELINE

SENSITIVE RECEPTORS
FARMERS DAM


Figure 3.1a Location of proposed 24 hour works





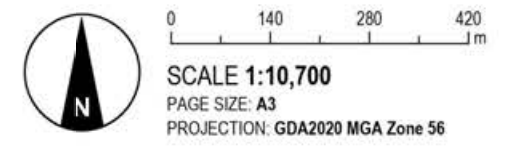
PLANS AND DOCUMENTS
referred to in the
SDA APPROVAL

SDA approval: APC2024/004



- LEGEND**
- Pipeline Alignment (P2023_02_231019_Alignment)
 - Trenchless Crossings
 - Sensitive Receivers
 - Community Areas
 - Property Boundaries
 - Local Government Areas Boundaries
- State Development Areas**
- Gladstone State Development Area
 - Stanwell to Gladstone Infrastructure Corridor State Development Area

SOURCE
Pipeline alignment, ROW areas and property boundaries from W3Plus
Aerial imagery from QLD Spatial. (Latest Available when Printed)

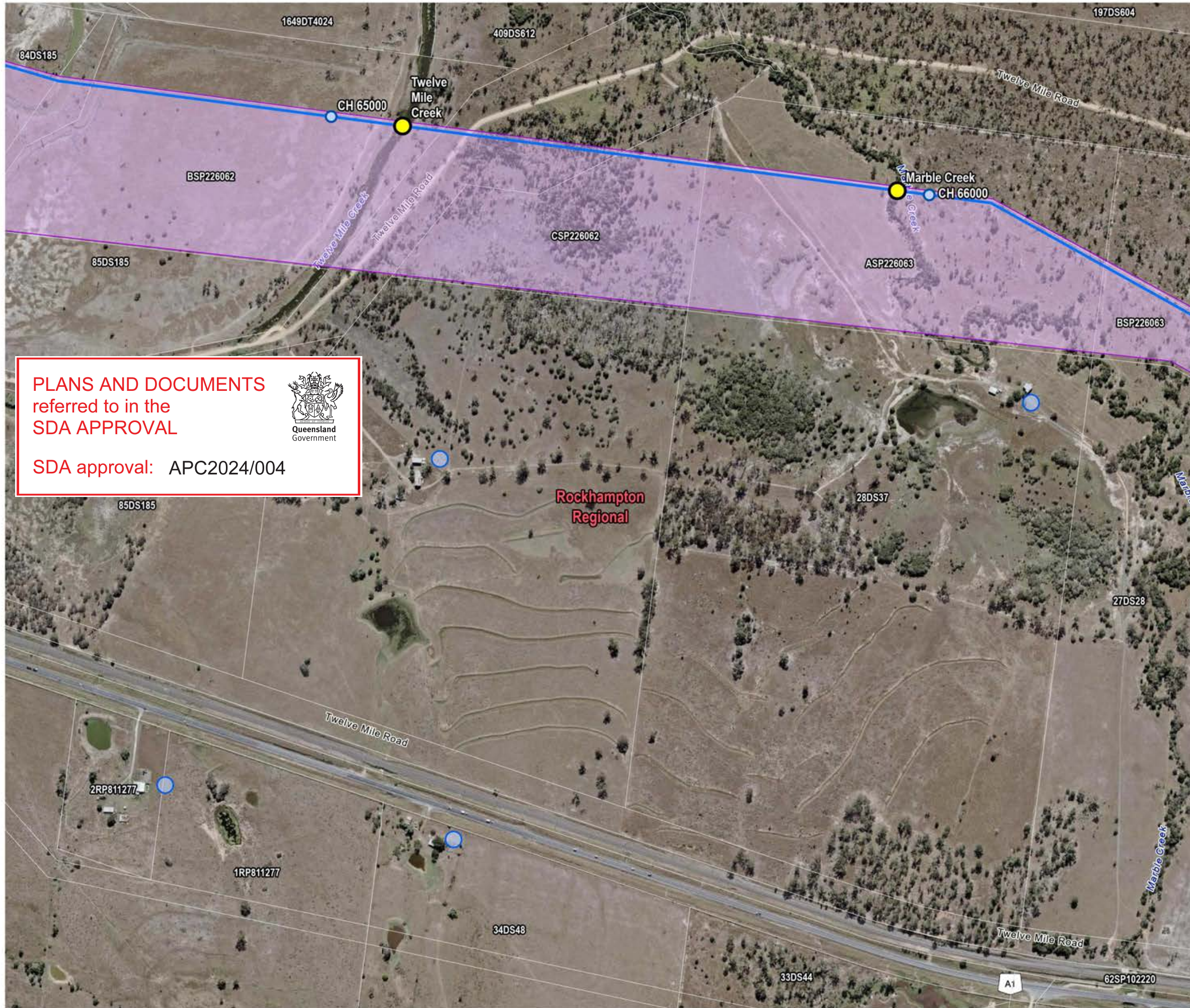


GLADSTONE AREA WATER BOARD
FITZROY TO GLADSTONE PIPELINE


SENSITIVE RECEPTORS
INKERMAN CREEK & PORT ALMA ROAD

Figure 3.1b Location of proposed 24 hour works






PLANS AND DOCUMENTS
referred to in the
SDA APPROVAL


Queensland
Government

SDA approval: APC2024/004

- LEGEND**
-  Pipeline Alignment (P2023_02_231019_Alignment)
 -  Trenchless Crossings
 -  Sensitive Receivers
 -  Community Areas
 -  Property Boundaries
 -  Local Government Areas Boundaries
 - State Development Areas**
 -  Gladstone State Development Area
 -  Stanwell to Gladstone Infrastructure Corridor State Development Area

SOURCE
Pipeline alignment, ROW areas and property boundaries from W3Plus
Aerial imagery from QLD Spatial. (Latest Available when Printed)



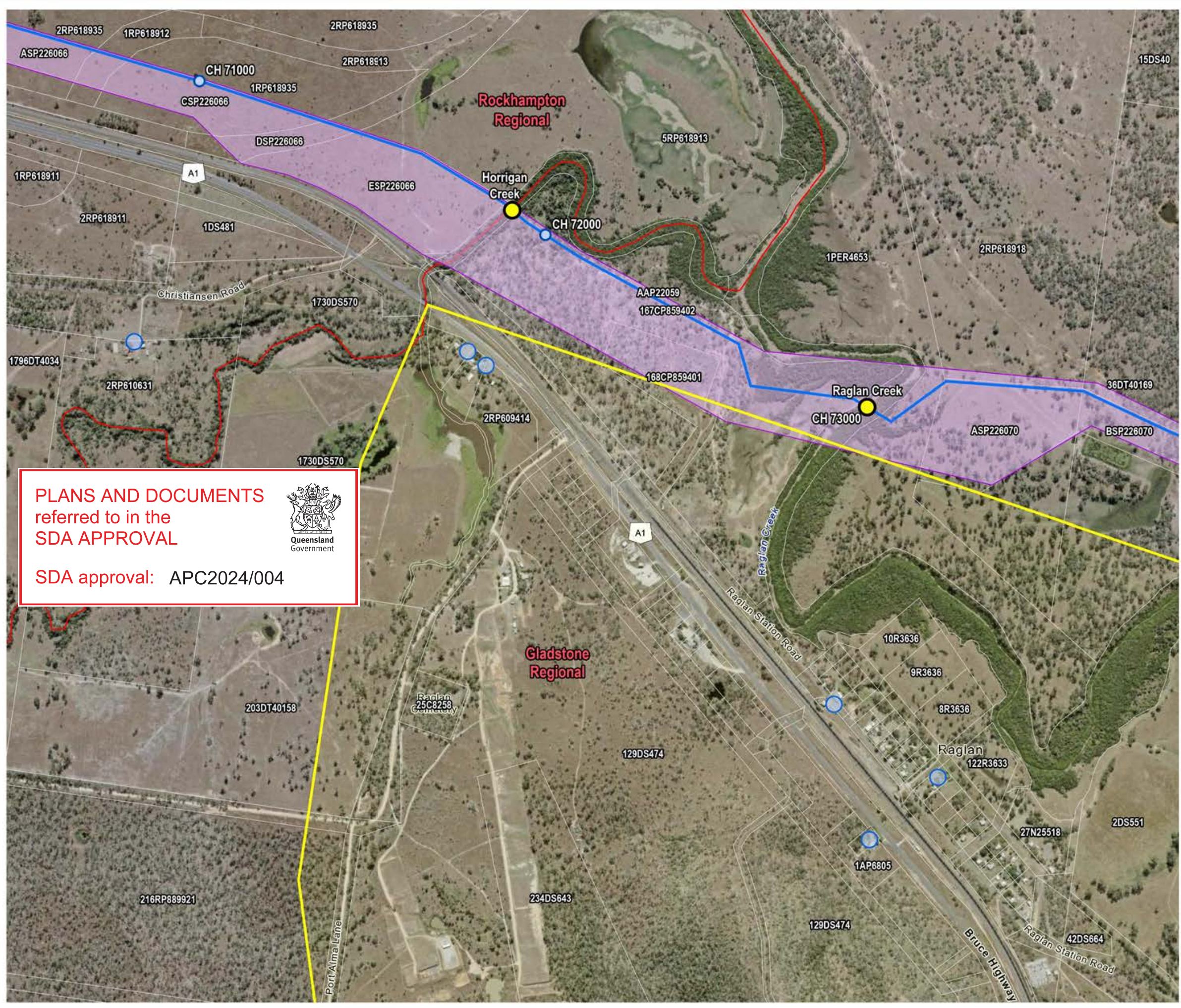
SCALE 1:6,300
PAGE SIZE: A3
PROJECTION: GDA2020 MGA Zone 56

GLADSTONE AREA WATER BOARD
FITZROY TO GLADSTONE PIPELINE


SENSITIVE RECEPTORS
TWELVE MILE & MARBLE CREEK

Figure 3.1c Location of proposed 24 hour works







PLANS AND DOCUMENTS
referred to in the
SDA APPROVAL


Queensland
Government

SDA approval: APC2024/004

- LEGEND**
-  Pipeline Alignment (P2023_02_231019_Alignment)
 -  Trenchless Crossings
 -  Sensitive Receivers
 -  Community Areas
 -  Property Boundaries
 -  Local Government Areas Boundaries
 - State Development Areas**
 -  Gladstone State Development Area
 -  Stanwell to Gladstone Infrastructure Corridor State Development Area

SOURCE
Pipeline alignment, ROW areas and property boundaries from W3Plus
Aerial imagery from QLD Spatial. (Latest Available when Printed)

SCALE 1:9,800
PAGE SIZE: A3
PROJECTION: GDA2020 MGA Zone 56

GLADSTONE AREA WATER BOARD
FITZROY TO GLADSTONE PIPELINE

SENSITIVE RECEPTORS
RAGLAN & HORRIGAN CREEK

Figure 3.1d Location of proposed 24 hour works

McCONNELL DOWELL
CREATIVE CONSTRUCTION™

BMD

FITZROY TO GLADSTONE PIPELINE PROJECT

ALTON DOWNS TO RAGLAN PIPELINE : 34100 COVER SHEET

GENERAL

DRAWING No.	TITLE
30032656-DWG-34100-G-4000	COVER SHEET

CIVIL WORKS

DRAWING No.	TITLE
30032656-DWG-34100-C-4001	KEY PLAN - SHEET 1
30032656-DWG-34100-C-4002	KEY PLAN - SHEET 2
30032656-DWG-34100-C-4003	KEY PLAN - SHEET 3
30032656-DWG-34100-C-4018	LAYOUT PLAN - SHEET 1
30032656-DWG-34100-C-4019	LAYOUT PLAN - SHEET 2
30032656-DWG-34100-C-4020	LAYOUT PLAN - SHEET 3
30032656-DWG-34100-C-4021	LAYOUT PLAN - SHEET 4
30032656-DWG-34100-C-4022	LAYOUT PLAN - SHEET 5
30032656-DWG-34100-C-4023	LAYOUT PLAN - SHEET 6
30032656-DWG-34100-C-4024	LAYOUT PLAN - SHEET 7
30032656-DWG-34100-C-4025	LAYOUT PLAN - SHEET 8
30032656-DWG-34100-C-4026	LAYOUT PLAN - SHEET 9
30032656-DWG-34100-C-4027	LAYOUT PLAN - SHEET 10
30032656-DWG-34100-C-4028	LAYOUT PLAN - SHEET 11
30032656-DWG-34100-C-4029	LAYOUT PLAN - SHEET 12
30032656-DWG-34100-C-4030	LAYOUT PLAN - SHEET 13
30032656-DWG-34100-C-4031	LAYOUT PLAN - SHEET 14
30032656-DWG-34100-C-4032	LAYOUT PLAN - SHEET 15
30032656-DWG-34100-C-4033	LAYOUT PLAN - SHEET 16
30032656-DWG-34100-C-4034	LAYOUT PLAN - SHEET 17
30032656-DWG-34100-C-4035	LAYOUT PLAN - SHEET 18
30032656-DWG-34100-C-4036	LAYOUT PLAN - SHEET 19
30032656-DWG-34100-C-4037	LAYOUT PLAN - SHEET 20
30032656-DWG-34100-C-4038	LAYOUT PLAN - SHEET 21
30032656-DWG-34100-C-4039	LAYOUT PLAN - SHEET 22
30032656-DWG-34100-C-4040	PLAN AND LONG SECTION - GENERAL NOTES AND LEGEND

GEOTECHNICAL

DRAWING No.	TITLE
30032656-DWG-34100-U-4190	RIDGELANDS ROAD CROSSING - PLAN AND LONG SECTION
30032656-DWG-34100-U-4191	CAPRICORN HIGHWAY CROSSING - PLAN AND LONG SECTION
30032656-DWG-34100-U-4192	BRUCE HIGHWAY / YEPPEEN RAIL LINE CROSSING - PLAN & LONG SECTION
30032656-DWG-34100-U-4193	BAJOOL RAIL SIDING CROSSING - PLAN AND LONG SECTION
30032656-DWG-34100-U-4194	INKERMAN CREEK CROSSING - PLAN AND LONG SECTION
30032656-DWG-34100-U-4195	HORRIGAN CREEK CROSSING - PLAN AND LONG SECTION
30032656-DWG-34100-U-4196	RAGLAN CREEK CROSSING - PLAN AND LONG SECTION
30032656-DWG-34100-U-4197	GAVIAL CREEK CROSSING - PLAN AND LONG SECTION
30032656-DWG-34100-U-4198	BOB'S CREEK CROSSING - PLAN AND LONG SECTION
30032656-DWG-34100-U-4199	BAJOOL PORT ALMA ROAD CROSSING - PLAN AND LONG SECTION
30032656-DWG-34100-U-4200	RAIL LINE CROSSING LOT 2RP603319 - PLAN AND LONG SECTION
30032656-DWG-34100-U-4201	LION LAGOON CREEK CROSSING - PLAN AND LONG SECTION

PLANS AND DOCUMENTS
referred to in the
SDA APPROVAL



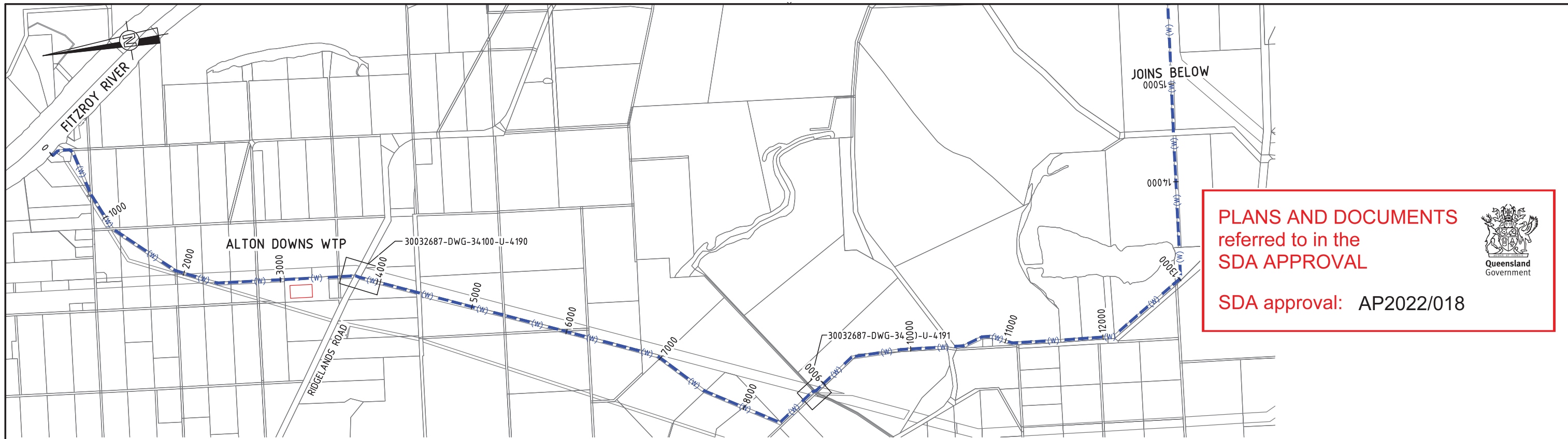
SDA approval: AP2022/018

NOTE
1. FOR SMEC'S DISCLAIMER REFER DRAWING
30032687-DWG-32000-G-0112

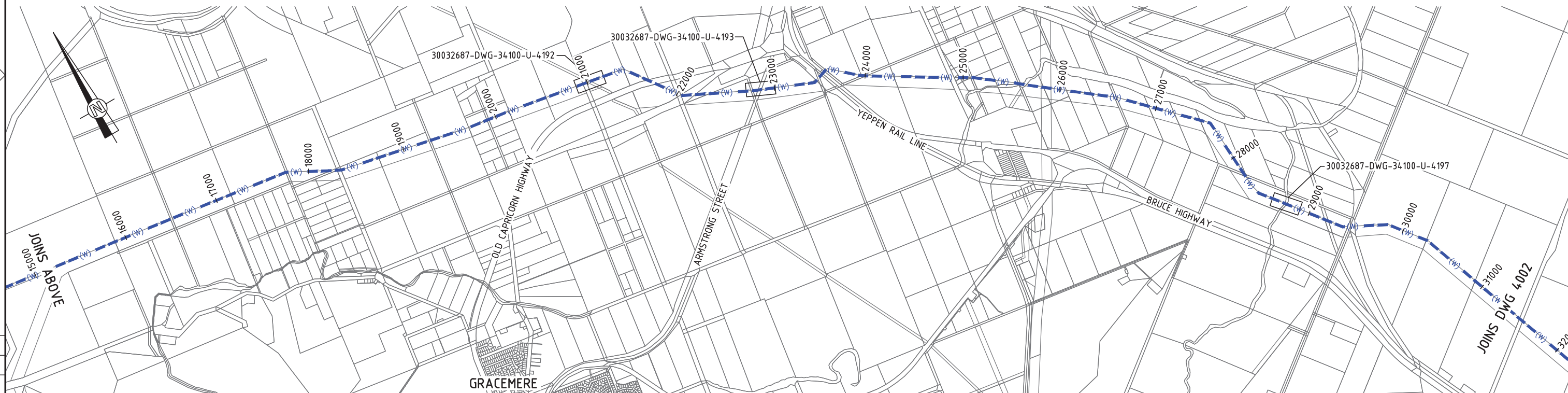
NOT FOR CONSTRUCTION

150 mm ON ORIGINAL
A1
0 10 20 30 40 50 60 70 80 90 100 110 120 130 140 150

DRAWING FILE LOCATION / NAME V:_Vault\Projects\3003\30032687\GFP-DE Project\110_CADD\CAD\DWG\0130 GL\34100 ALTON DOWNS TO RAGLAN PIPELINE\30032687-DWG-34100-G-4000.dwg		PLOT DATE 21 Nov 2022	TIME 15:16:49									PROJECT TITLE FITZROY TO GLADSTONE PIPELINE PROJECT 30GLA - ALTON DOWNS TO RAGLAN PIPELINE GENERAL COVER SHEET				
EXTERNAL REFERENCE FILES K_30032687_SMEC_A1		REV	DATE	AMENDMENT / REVISION DESCRIPTION	WVR No.	APPROVAL	TITLE	NAME	SCALES AT A1 SIZE DRAWING		DESIGNER Member of the Surbana Jurong Group © ABN 47 065 475 149 LEVEL 6, 480 ST PAULS TERRACE FORTITUDE VALLEY QLD 4006 SMEC PROJECT No 30032687	CLIENT 	SCALE	PHASE CONCEPT DESIGN	PROJECT / DRAWING No. 30032687-DWG-34100-G-4000	REVISION D
	A	20.08.21		30% CONCEPT DESIGN	006	MSL	DRAFTER	SUCHITH.R								
	B	14.01.22		CONCEPT DESIGN-ECI PHASE	006	MSL	DRAFTING CHECK	C.BOU								
	C	30.06.22		OPTIMISED CONCEPT DESIGN	006	MSL	DESIGNER	J.WAGENAAR								
	D	18.11.22		UPDATED RIGHT OF WAY	037	MSL	DESIGN CHECK	M.SERRANO LOPEZ								
							PROJECT MANAGER	M.SERRANO LOPEZ								
							PROJECT DIRECTOR	D.TAYLOR								



LOCALITY PLAN - 1



LOCALITY PLAN - 2

NOTE
 1. FOR SMEC'S DISCLAIMER REFER DRAWING 30032687-DWG-32000-G-0112

NOT FOR CONSTRUCTION

DRAWING FILE LOCATION / NAME V:_Vault\Projects\3003\30032687\GFP-DE Project\110_CADD\CAD\DWG\01 30 GL\34100 ALTON DOWNS TO RAGLAN PIPELINE\30032687-DWG-34100-C-4001.dwg		PLOT DATE 21 Nov 2022		TIME 13:03:08	
EXTERNAL REFERENCE FILES X_30032687_SMEC_A1 X_DCD	REV	DATE	AMENDMENT / REVISION DESCRIPTION	MWR No.	APPROVAL
	A	20.08.21	30% CONCEPT DESIGN	006	MSL
	B	14.01.22	CONCEPT DESIGN-ECI PHASE	006	MSL
	C	30.06.22	OPTIMISED CONCEPT DESIGN	006	MSL
	D	18.11.22	UPDATED RIGHT OF WAY	037	MSL

DESIGNER	NAME
DRAFTER	SUCHITH.R
DRAFTING CHECK	C.BOU
DESIGNER	J.WAGENAAR
DESIGN CHECK	M.SERRANO LOPEZ
PROJECT MANAGER	M.SERRANO LOPEZ
PROJECT DIRECTOR	D.TAYLOR

SCALES AT A1 SIZE DRAWING

SCALE 1 : 40000 (A3) : 20000 (A1)

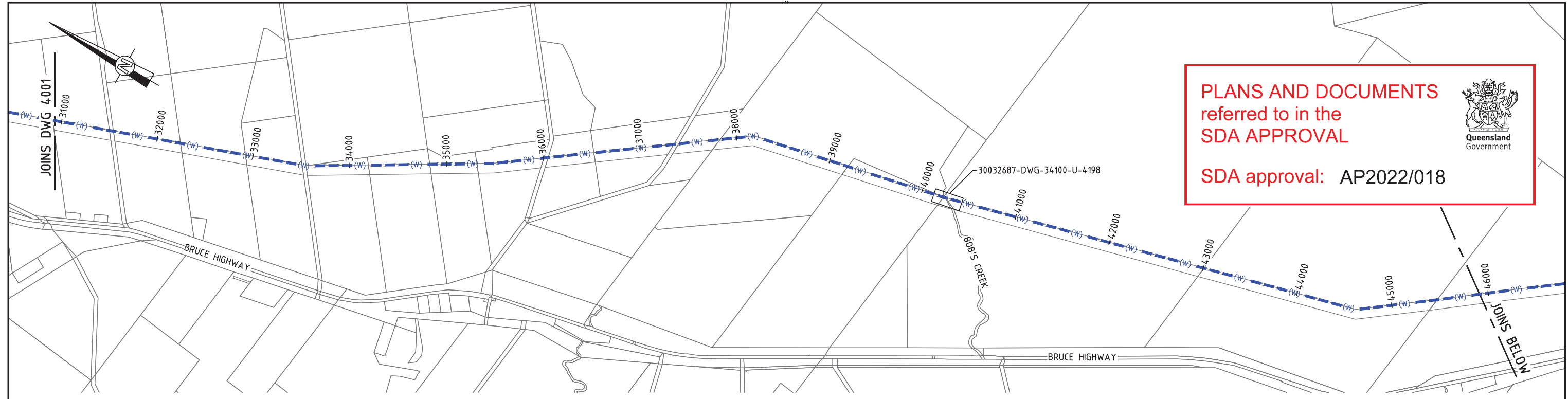
DESIGNER

Member of the Surbana Jurong Group
 © ABN 47 065 475 149
 LEVEL 6, 480 ST PAULS TERRACE
 FORTITUDE VALLEY QLD 4006
 SMEC PROJECT No 30032687

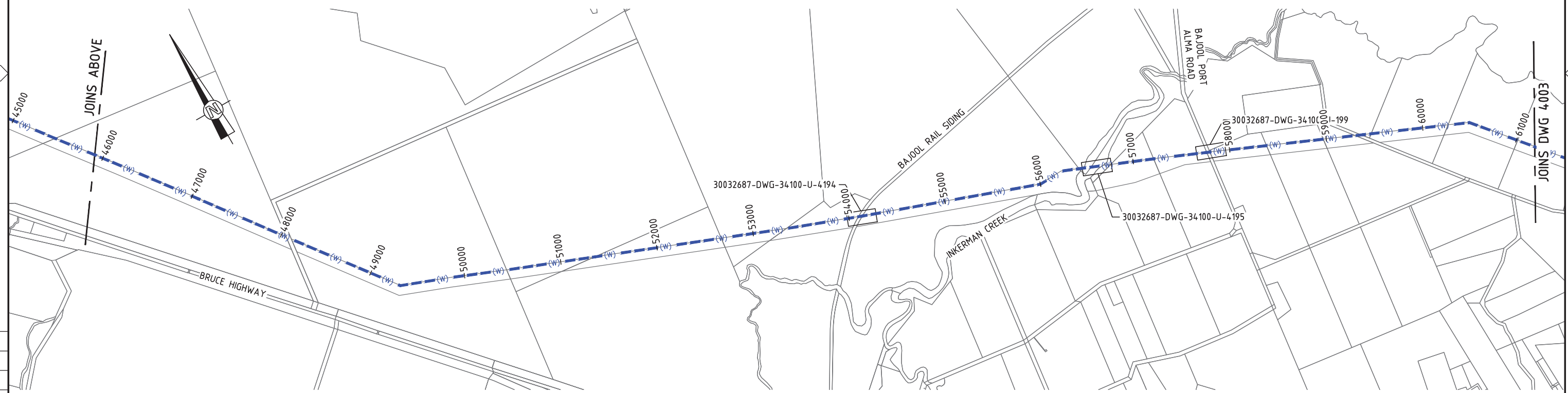
CLIENT

Gladstone Area Water Board

PROJECT TITLE FITZROY TO GLADSTONE PIPELINE PROJECT 30GLA - ALTON DOWNS TO RAGLAN PIPELINE			
KEY PLAN SHEET 1			
SCALE	PHASE	PROJECT / DRAWING No.	REVISION
	CONCEPT DESIGN	30032687-DWG-34100-C-4001	D



LOCALITY PLAN - 3



LOCALITY PLAN - 4

NOTE
 1. FOR SMEC'S DISCLAIMER REFER DRAWING 30032687-DWG-32000-G-0112

NOT FOR CONSTRUCTION

150 mm ON ORIGINAL
 A1
 0 10 20 30 40 50 60 70 80 90 100 110 120 130 140 150

DRAWING FILE LOCATION / NAME V:_Vault\Projects\3003\30032687\GFP-DE Project\110_CADD\CAD\DWG\01 30 GL\34100 ALTON DOWNS TO RAGLAN PIPELINE\30032687-DWG-34100-C-4002.dwg		PLOT DATE 21 Nov 2022		TIME 13:03:39	
EXTERNAL REFERENCE FILES X_30032687_SMEC_A1 X_0000	REV	DATE	AMENDMENT / REVISION DESCRIPTION	WVR No.	APPROVAL
	A	20.08.21	30% CONCEPT DESIGN	006	MSL
	B	14.01.22	CONCEPT DESIGN-ECI PHASE	006	MSL
	C	30.06.22	OPTIMISED CONCEPT DESIGN	006	MSL
	D	18.11.22	UPDATED RIGHT OF WAY	037	MSL

DESIGNER	SUCHITH.R
DRAFTING CHECK	C.BOU
DESIGNER	J.WAGENAAR
DESIGN CHECK	M.SERRANO LOPEZ
PROJECT MANAGER	M.SERRANO LOPEZ
PROJECT DIRECTOR	D.TAYLOR

SCALES AT A1 SIZE DRAWING	SCALE 0 200 400 600 800 1000m 1 : 40000 (A3) : 20000 (A1)
---------------------------	---

DESIGNER



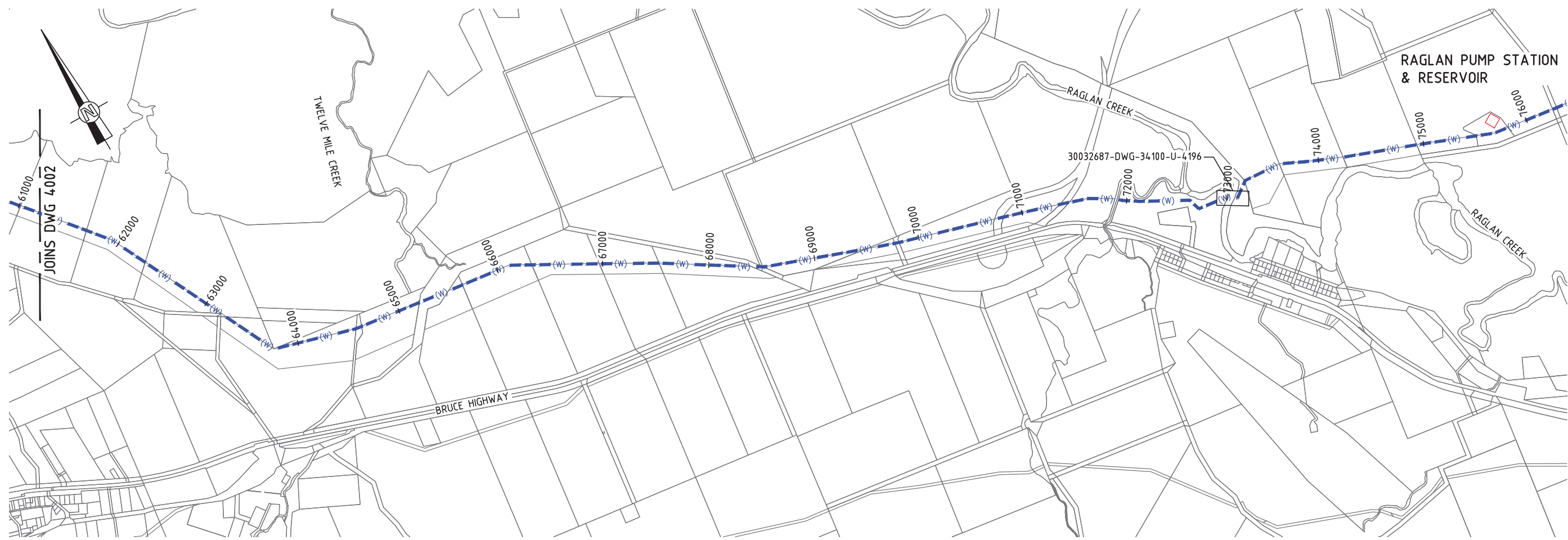
Member of the Surbana Jurong Group
 © ABN 47 065 475 149
 LEVEL 6, 480 ST PAULS TERRACE
 FORTITUDE VALLEY QLD 4006
 SMEC PROJECT No 30032687

CLIENT



Gladstone Area Water Board

PROJECT TITLE FITZROY TO GLADSTONE PIPELINE PROJECT 30GLA - ALTON DOWNS TO RAGLAN PIPELINE			
KEY PLAN SHEET 2			
SCALE	PHASE CONCEPT DESIGN	PROJECT / DRAWING No. 30032687-DWG-34100-C-4002	REVISION D



LOCALITY PLAN - 5

PLANS AND DOCUMENTS
referred to in the
SDA APPROVAL

SDA approval: AP2022/018



NOTE
1. FOR SMEC'S DISCLAIMER REFER DRAWING
30032687-DWG-32000-G-0112

NOT FOR CONSTRUCTION

150 mm ON ORIGINAL
A1
0 10 20 30 40 50 60 70 80 90 100 110 120 130 140 150

DRAWING FILE LOCATION / NAME V:_Vault\Projects\3003\30032687\GFP-DE Project\110_CADD\CAD\DWG\01 30 GL\34100 ALTON DOWNS TO RAGLAN PIPELINE\30032687-DWG-34100-C-4003.dwg		PLOT DATE 21 Nov 2022		TIME 13:04:16	
EXTERNAL REFERENCE FILES X_30032687_SMEC_A1 X_DCD	REV	DATE	AMENDMENT / REVISION DESCRIPTION	WVR No.	APPROVAL
	A	20.08.21	30% CONCEPT DESIGN	006	MSL
	B	14.01.22	CONCEPT DESIGN-ECI PHASE	006	MSL
	C	30.06.22	OPTIMISED CONCEPT DESIGN	006	MSL
	D	18.11.22	UPDATED RIGHT OF WAY	037	MSL

TITLE	NAME
DRAFTER	SUCHITH.R
DRAFTING CHECK	C.BOU
DESIGNER	J.WAGENAAR
DESIGN CHECK	M.SERRANO LOPEZ
PROJECT MANAGER	M.SERRANO LOPEZ
PROJECT DIRECTOR	D.TAYLOR

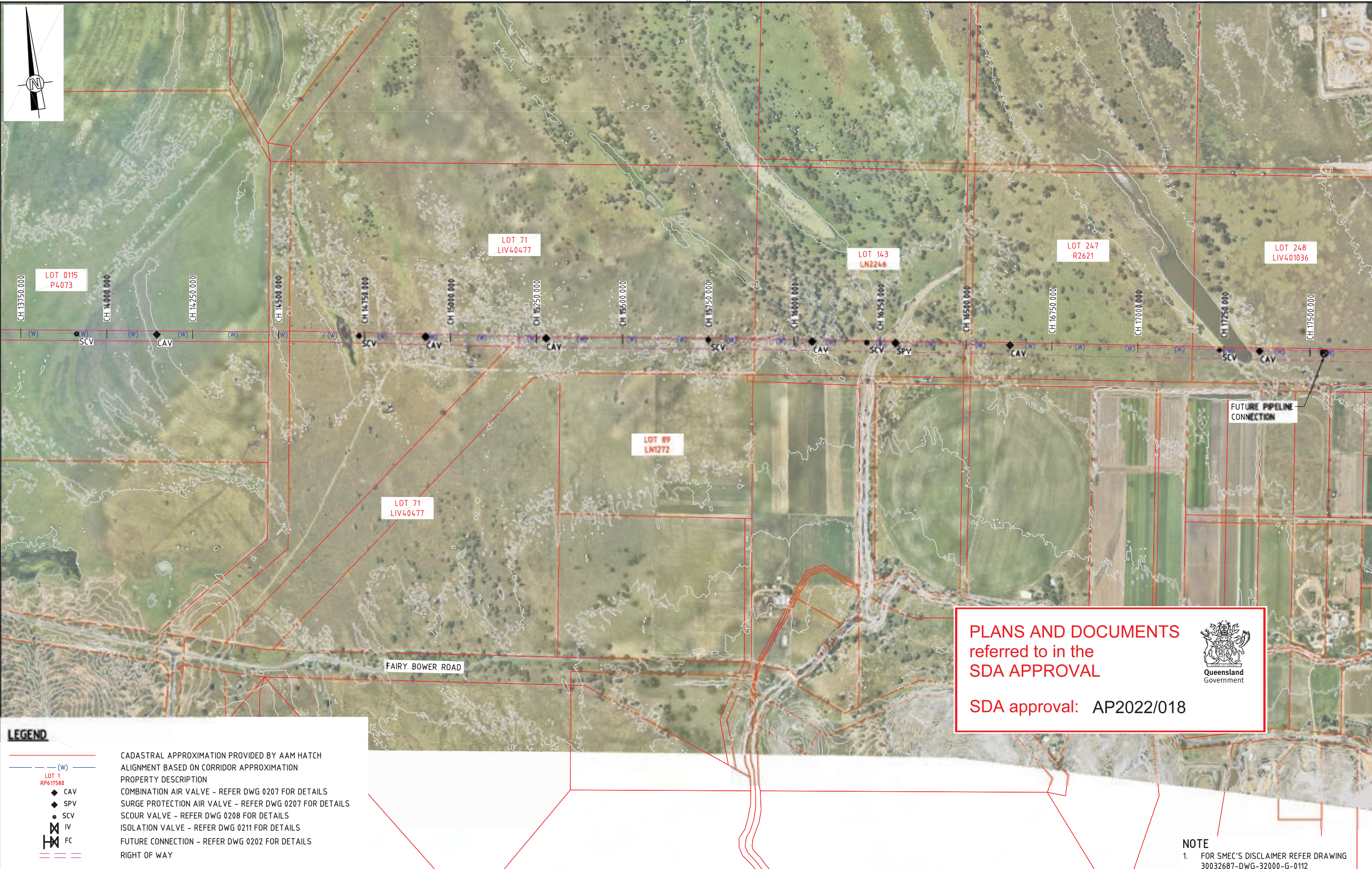
SCALES AT A1 SIZE DRAWING
SCALE 0 200 400 600 800 1000m 1 : 40000 (A3) : 20000 (A1)

DESIGNER

Member of the Surbana Jurong Group
© ABN 47 065 475 149
LEVEL 6, 480 ST PAULS TERRACE
FORTITUDE VALLEY QLD 4006
SMEC PROJECT No 30032687

CLIENT

PROJECT TITLE FITZROY TO GLADSTONE PIPELINE PROJECT 30GLA - ALTON DOWNS TO RAGLAN PIPELINE KEY PLAN SHEET 3			
SCALE	PHASE CONCEPT DESIGN	PROJECT / DRAWING No. 30032687-DWG-34100-C-4003	REVISION D



PLANS AND DOCUMENTS
referred to in the
SDA APPROVAL

SDA approval: AP2022/018



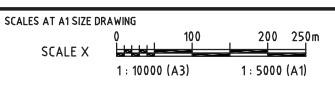
NOTE
1. FOR SMEC'S DISCLAIMER REFER DRAWING
30032687-DWG-32000-G-0112

LEGEND

	CADASTRAL APPROXIMATION PROVIDED BY AAM HATCH
	ALIGNMENT BASED ON CORRIDOR APPROXIMATION
	PROPERTY DESCRIPTION
	COMBINATION AIR VALVE - REFER DWG 0207 FOR DETAILS
	SURGE PROTECTION AIR VALVE - REFER DWG 0207 FOR DETAILS
	SCOUR VALVE - REFER DWG 0208 FOR DETAILS
	ISOLATION VALVE - REFER DWG 0211 FOR DETAILS
	FUTURE CONNECTION - REFER DWG 0202 FOR DETAILS
	RIGHT OF WAY

DRAWING FILE LOCATION / NAME V:_Vault\Projects\3003\30032687\GFP-0E Project\110_CADD\CAD\DWG\01 30 GL\34100 ALTON DOWNS TO RAGLAN PIPELINE\30032687-DWG-34100-C-4022.dwg		PLOT DATE 21 Nov 2022		TIME 14:18:19	
EXTERNAL REFERENCE FILES	REV	DATE	AMENDMENT / REVISION DESCRIPTION	MWR No.	APPROVAL
X_5000_DWG_LEGEND	A	20.08.21	30% CONCEPT DESIGN	006	MSL
X_30032656_SHEC_A1	B	14.01.22	CONCEPT DESIGN-ECI PHASE	006	MSL
X_VALVES	C	30.06.22	OPTIMISED CONCEPT DESIGN	006	MSL
X_CONTOUR 1m INTERVAL	D	18.11.22	UPDATED RIGHT OF WAY	037	MSL
X_DWG					
SS_30032687_GFP_Aerial Image					
X_30032687_GFP_Aerial Image_1					
X_30032687_GFP_Alignment_2522					
X_30032687_GFP_ROW					

DESIGNER	NAME
DRAFTING CHECK	SUCHITH.R
DESIGNER	C.BOU
DESIGN CHECK	J.WAGENAAR
PROJECT MANAGER	M.SERRANO LOPEZ
PROJECT DIRECTOR	D.TAYLOR



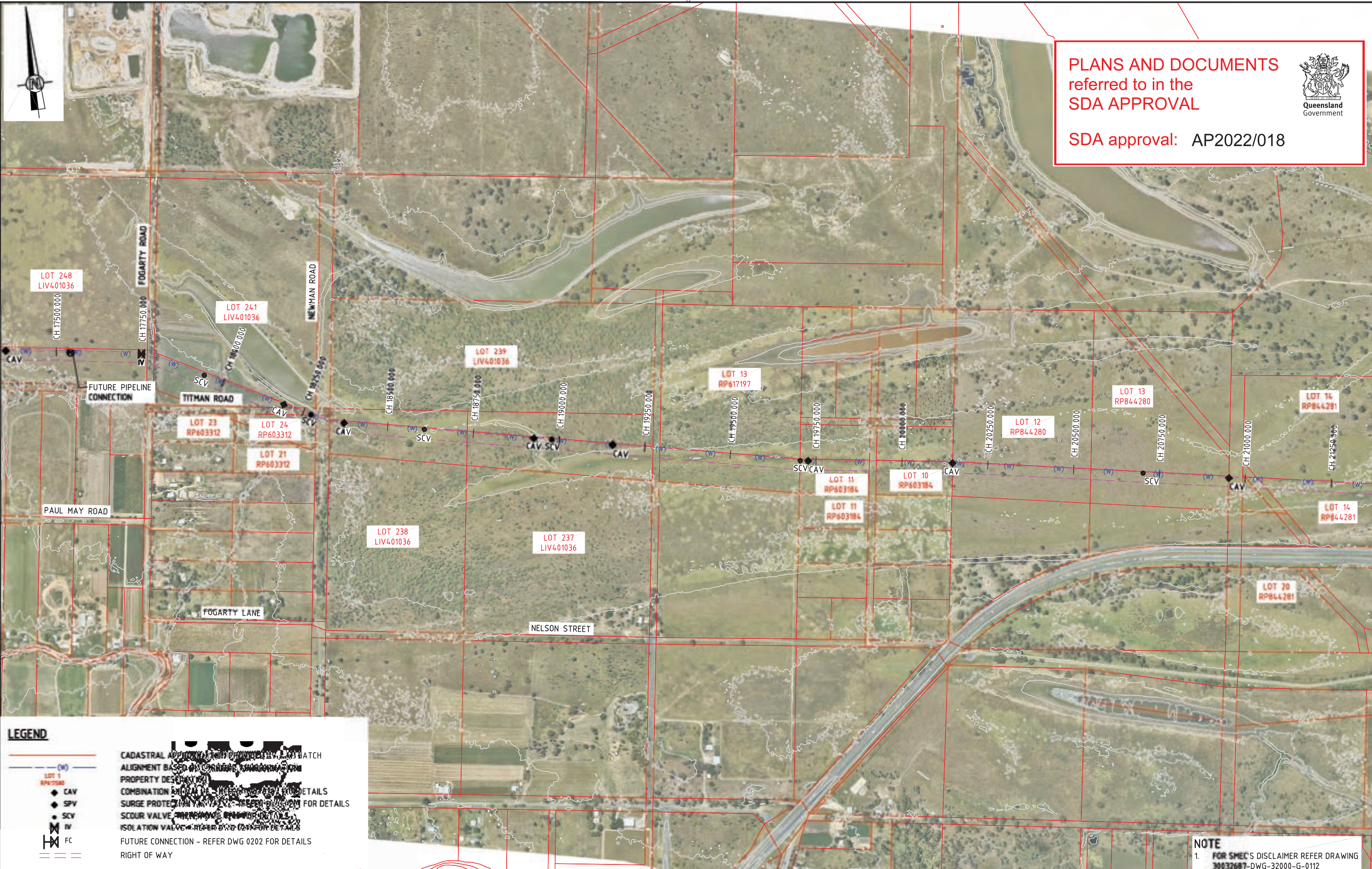
NOT FOR CONSTRUCTION

SMEC
Member of the Surland Jurong Group
© ABN 47 065 475 149
LEVEL 6, 480 ST PAULS TERRACE
FORTITUDE VALLEY QLD 4006
SMEC PROJECT No 30032687

Gladstone Area Water Board

PROJECT TITLE FITZROY TO GLADSTONE PIPELINE PROJECT 30GLA - ALTON DOWNS TO RAGLAN PIPELINE LAYOUT PLAN CH14500 TO CH18000 SHEET 5			
SCALE 1:5000	PHASE CONCEPT DESIGN	PROJECT / DRAWING No. 30032687-DWG-34100-C-4022	REVISION D

150 mm ON ORIGINAL
A1



PLANS AND DOCUMENTS
referred to in the
SDA APPROVAL

SDA approval: AP2022/018



150 mm ON ORIGINAL
A1

LEGEND

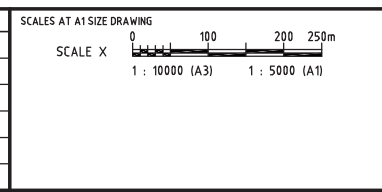
- LOT 1 RP617197
- CAV
- SPV
- SCV
- IV
- FC
- FUTURE CONNECTION - REFER DWG 0202 FOR DETAILS
- RIGHT OF WAY

CADASTRAL APPROVALS
ALIGNMENT BASED ON CURRENTLY AVAILABLE WATCH PROPERTY DESECT DATA
COMBINATION OF THE ABOVE INFORMATION FOR DETAILS
SURGE PROTECTION VALVE - REFER DWG 0202 FOR DETAILS
SCOUR VALVE - REFER DWG 0202 FOR DETAILS
ISOLATION VALVE - REFER DWG 0202 FOR DETAILS
FUTURE CONNECTION - REFER DWG 0202 FOR DETAILS
RIGHT OF WAY

NOTE
1. FOR SMEC'S DISCLAIMER REFER DRAWING 30032687-DWG-32000-G-0112

NOT FOR CONSTRUCTION

DRAWING FILE LOCATION / NAME V:_Vault\Projects\3003\30032687\GFP-DE Project\110_CADD\CAD\DWG\01 30 GL\34100 ALTON DOWNS TO RAGLAN PIPELINE\30032687-DWG-34100-C-4023.dwg		PLOT DATE 21 Nov 2022		TIME 14:31:39	
REV	DATE	AMENDMENT / REVISION DESCRIPTION	MWR No.	APPROVAL	TITLE
A	20.08.21	30% CONCEPT DESIGN	006	MSL	DRAFTER <i>SUCHITH.R</i>
B	14.01.22	CONCEPT DESIGN-ECI PHASE	006	MSL	DRAFTING CHECK <i>C.BOU</i>
C	30.06.22	OPTIMISED CONCEPT DESIGN	006	MSL	DESIGNER <i>J.W.AGENAAR</i>
D	18.11.22	UPDATED RIGHT OF WAY	037	MSL	DESIGN CHECK <i>M.SERRANO LOPEZ</i>
					PROJECT MANAGER <i>M.SERRANO LOPEZ</i>
					PROJECT DIRECTOR <i>D.TAYLOR</i>



DESIGNER

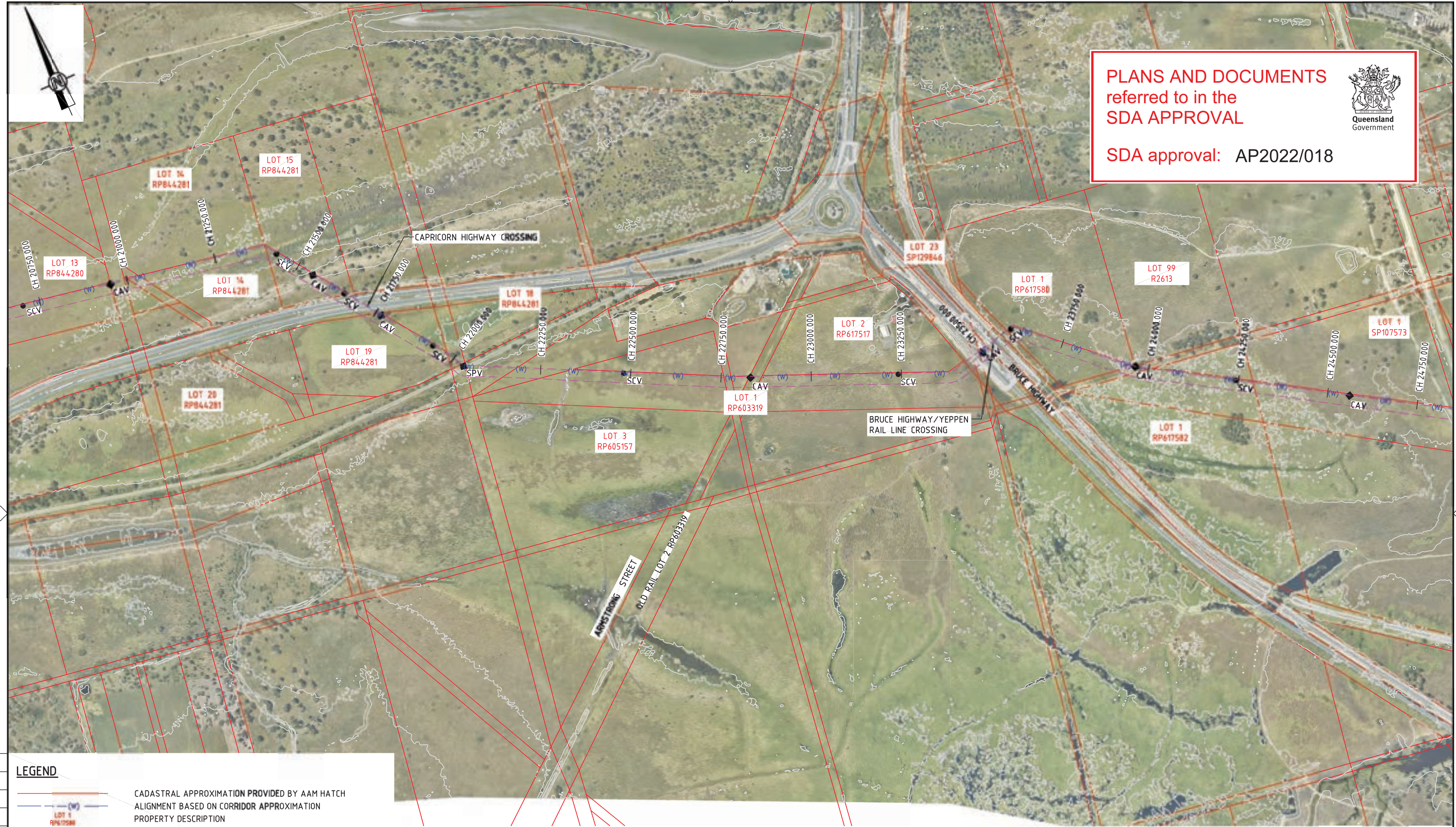
Member of the Stantec Jurong Group
© ABN 47 065 475 149
LEVEL 6, 480 ST PAULS TERRACE
FORTITUDE VALLEY QLD 4006
SMEC PROJECT No 30032687

CLIENT

PROJECT TITLE FITZROY TO GLADSTONE PIPELINE PROJECT 30GLA - ALTON DOWNS TO RAGLAN PIPELINE LAYOUT PLAN CH18000 TO CH21500 SHEET 6			
SCALE 1:5000	PHASE CONCEPT DESIGN	PROJECT / DRAWING No. 30032687-DWG-34100-C-4023	REVISION D

PLANS AND DOCUMENTS
referred to in the
SDA APPROVAL

SDA approval: AP2022/018



150 mm ON ORIGINAL
140
130
120
110
100
90
80
70
60
50
40
30
20
10
0

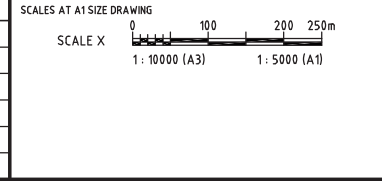
LEGEND

- CADASTRAL APPROXIMATION PROVIDED BY AAM HATCH
- ALIGNMENT BASED ON CORRIDOR APPROXIMATION
- PROPERTY DESCRIPTION
- CAV COMBINATION AIR VALVE - REFER DWG 0207 FOR DETAILS
- SPV SURGE PROTECTION AIR VALVE - REFER DWG 0207 FOR DETAILS
- SCV SCOUR VALVE - REFER DWG 0208 FOR DETAILS
- IV ISOLATION VALVE - REFER DWG 0211 FOR DETAILS
- FC FUTURE CONNECTION - REFER DWG 0202 FOR DETAILS
- RIGHT OF WAY

NOTE
1. FOR SMEC'S DISCLAIMER REFER DRAWING 30032687-DWG-32000-G-0112

NOT FOR CONSTRUCTION

DRAWING FILE LOCATION / NAME V:_Vault\Projects\3003\30032687\GFP-DE Project\110_CADD\CAD\DWG\01 30 GL\34100 ALTON DOWNS TO RAGLAN PIPELINE\30032687-DWG-34100-C-4024.dwg		PLOT DATE 21 Nov 2022		TIME 14:40:05	
REV	DATE	AMENDMENT / REVISION DESCRIPTION	MWR No.	APPROVAL	TITLE
A	20.08.21	30% CONCEPT DESIGN	006	MSL	DRAFTER <i>SUCHITH.R</i>
B	14.01.22	CONCEPT DESIGN-ECI PHASE	006	MSL	DRAFTING CHECK <i>C.BOU</i>
C	30.06.22	OPTIMISED CONCEPT DESIGN	006	MSL	DESIGNER <i>J.W.AGENAAR</i>
D	18.11.22	UPDATED RIGHT OF WAY	037	MSL	DESIGN CHECK <i>M.SERRANO LOPEZ</i>
					PROJECT MANAGER <i>M.SERRANO LOPEZ</i>
					PROJECT DIRECTOR <i>D.TAYLOR</i>

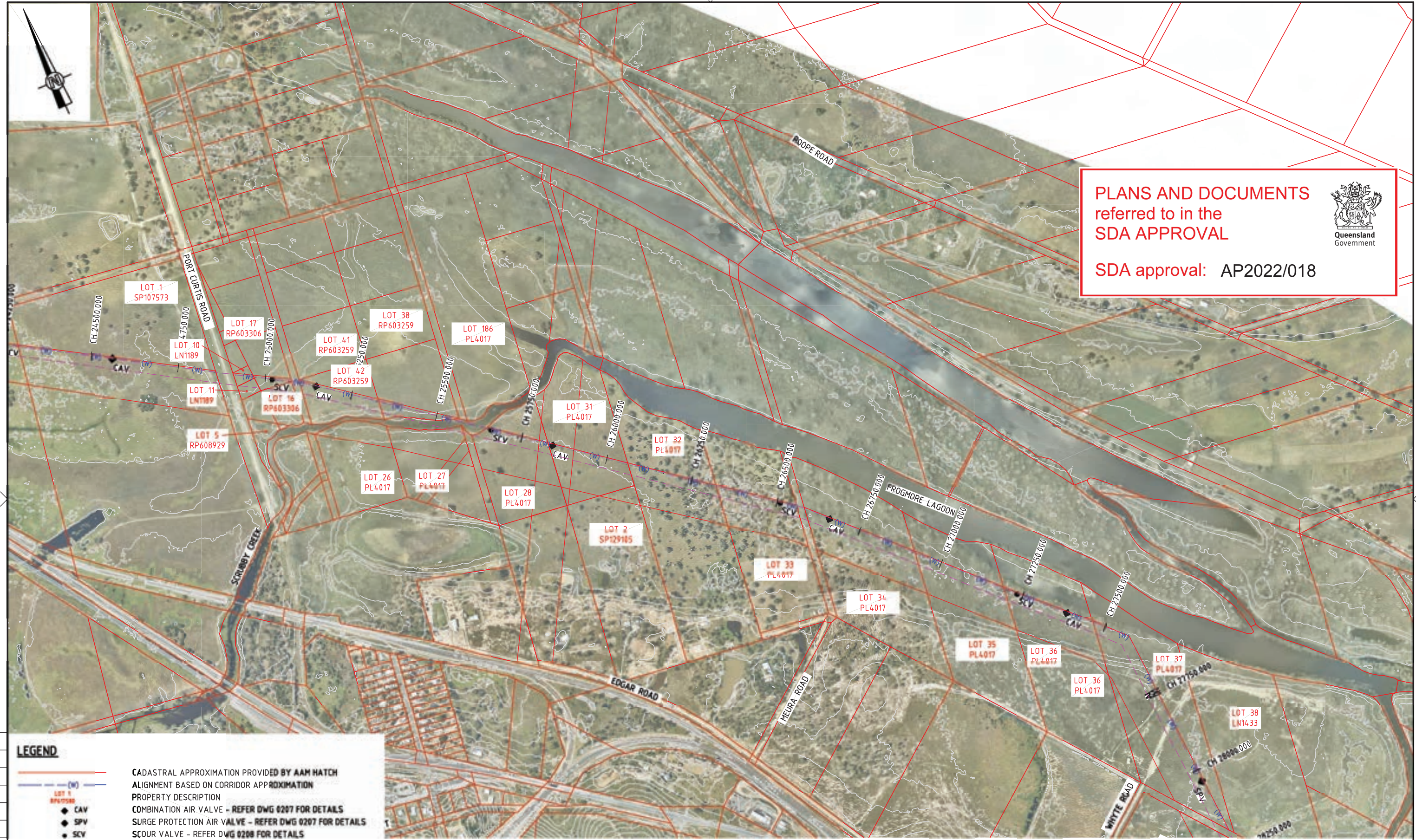


DESIGNER

Member of the Stantec Group
© ABN 47 065 475 149
LEVEL 6, 480 ST PAULS TERRACE
FORTITUDE VALLEY QLD 4006
SMEC PROJECT No 30032687

CLIENT

PROJECT TITLE FITZROY TO GLADSTONE PIPELINE PROJECT 30GLA - ALTON DOWNS TO RAGLAN PIPELINE LAYOUT PLAN CH21500 TO CH25000 SHEET 7			
SCALE 1:5000	PHASE CONCEPT DESIGN	PROJECT / DRAWING No. 30032687-DWG-34100-C-4024	REVISION D



PLANS AND DOCUMENTS
referred to in the
SDA APPROVAL

SDA approval: AP2022/018



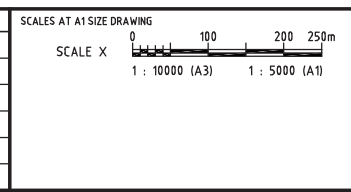
LEGEND	
	CADASTRAL APPROXIMATION PROVIDED BY AAM HATCH
	ALIGNMENT BASED ON CORRIDOR APPROXIMATION
	PROPERTY DESCRIPTION
	COMBINATION AIR VALVE - REFER DWG 0207 FOR DETAILS
	SURGE PROTECTION AIR VALVE - REFER DWG 0207 FOR DETAILS
	SCOUR VALVE - REFER DWG 0208 FOR DETAILS
	ISOLATION VALVE - REFER DWG 0211 FOR DETAILS
	FUTURE CONNECTION - REFER DWG 0202 FOR DETAILS
	RIGHT OF WAY

NOTE
1. FOR SMEC'S DISCLAIMER REFER DRAWING 30032687-DWG-32000-G-0112

NOT FOR CONSTRUCTION

150 mm ON ORIGINAL
A1

DRAWING FILE LOCATION / NAME		PLOT DATE		TIME		
V:_Vault\Projects\3003\30032687\GFP-DE Project\110_CADD\CAD\DWG\01 30 GL\34100 ALTON DOWNS TO RAGLAN PIPELINE\30032687-DWG-34100-C-4025.dwg		21 Nov 2022		14:49:31		
REV	DATE	AMENDMENT / REVISION DESCRIPTION	MWR No.	APPROVAL	TITLE	NAME
A	20.08.21	30% CONCEPT DESIGN	006	MSL	DRAFTER	SUCHITH.R
B	14.01.22	CONCEPT DESIGN-ECI PHASE	006	MSL	DRAFTING CHECK	C.BOU
C	30.06.22	OPTIMISED CONCEPT DESIGN	006	MSL	DESIGNER	J.WAGENAAR
D	18.11.22	UPDATED RIGHT OF WAY	037	MSL	DESIGN CHECK	M.SERRANO LOPEZ
					PROJECT MANAGER	M.SERRANO LOPEZ
					PROJECT DIRECTOR	D.TAYLOR



DESIGNER

Member of the Stantec Group
© ABN 47 065 475 149
LEVEL 6, 480 ST PAULS TERRACE
FORTITUDE VALLEY QLD 4006
SMEC PROJECT No 30032687

CLIENT

PROJECT TITLE			
FITZROY TO GLADSTONE PIPELINE PROJECT 30GLA - ALTON DOWNS TO RAGLAN PIPELINE LAYOUT PLAN CH25000 TO CH28500 SHEET 8			
SCALE	PHASE	PROJECT / DRAWING No.	REVISION
1:5000	CONCEPT DESIGN	30032687-DWG-34100-C-4025	D